

WEATHER

	Min.	Max.	Precip.
Thursday, July 1	56	69	0.15
Friday, July 2	56	71	Trace
Saturday, July 3	51	67	0.03
Sunday, July 4	54	83	0.00
Monday, July 5	60	89	0.00
Tuesday, July 6	61	84	0.00
Wednesday, July 7	60	89	0.04

The Chelsea Standard

QUOTE

"The spirit of, and practice of friendly co-operation is still the best way to help build a better community."
—American Proverb.

ONE HUNDRED-SEVENTH YEAR—No. 4

12 Pages This Week

CHELSEA, MICHIGAN, THURSDAY, JULY 8, 1976

15c per copy

SUBSCRIPTION: \$6.00 PER YEAR

Deadline Near For First Lady Contest Entries

Daily no longer as nominations in Chelsea's Bicentennial First Lady contest are fast approaching the deadline wire.

Highlighting the list of prizes to be awarded to the winners of the competition is a first prize trip for two to Eufaula, Ala. This port city in America's South traces its foundations back to antebellum days. Consequently, visitors are universally treated to a panorama of historic homes, sprawling lawns, blossoming dogwoods, and an exquisite waterfall on the Chattahoochee River.

Eufaula enjoys the distinction of being one of the finest recreation areas in the South. According to contest organizers, Chelsea's lucky lady will have all the features of an outstanding resort at her beck and call, including the opportunity to indulge in fishing, golf, or any other activity custom designed to induce relaxation.

Aside from these choices, Chelsea's reigning first lady will be the privileged guest of the entire

town. Eufaula has already been preparing for the royal visit in the traditional spirit of true Southern hospitality. Along with an entire program of personalized service, the Eufaula Bank, in particular, has arranged for a "queen's barge." The bank will have an executive houseboat available, to float Chelsea's lauded lady down the Chattahoochee River to the Gulf if she should so desire.

Chelsea, in turn, will host Eufaula's Bicentennial First Lady. The exchange of queens will serve to seal the common bond of 200 years of independence, shared by all 50 states, on a city to city scale, between our country's North and South. The plan is one of the grandest endeavors of Chelsea's Bicentennial celebration.

To become Chelsea's bicentennial ambassador, all you need do is enter the competition by contacting Jeanne Messing, 475-7024, or Ginny Wheaton, 475-7412. You need not have a sponsor to become a contestant in the event.

Gus Steger Will Head U. of M. Club

R. A. (Gus) Steger, Chelsea CPA, was elected president of the Ann Arbor U-M Club in an election of officers for the 1976-77 year.

Senior Citizen Swim Program Threatened

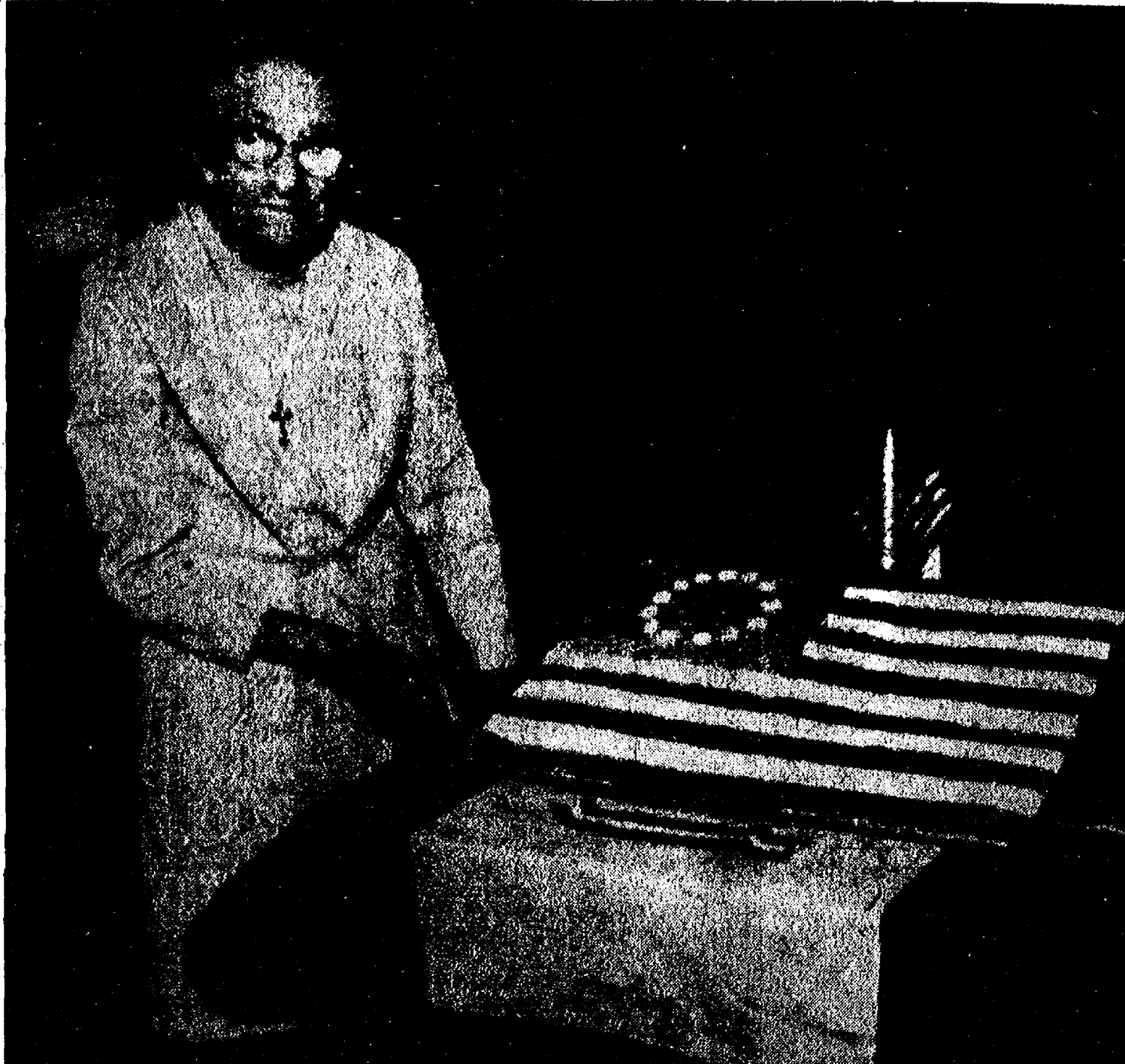
In an effort to serve all segments of the community, Chelsea's new indoor swimming pool at Beach Middle school opened with a comprehensive program designed to offer pool use to groups ranging from "aqua-tots" to handicapped adults. However, the first Thursday evening session, July 1, 8:30 to 10 p.m., reserved for senior citizens, was greeted with only a three-person response. Pool officials will be forced to cancel this session of the program, and replace it with a more popular one, unless more senior citizens decide to participate.

Chelsea Senior Citizens are an active organization, so explanations remain unclear as to why attendance was so poor this particular time. It was quite disappointing to the three seniors who did come Thursday evening, to find they were the only representatives of their group taking advantage of the special pool hours.

This week these three seniors will attempt to encourage a greater turnout from among their members, hopefully averting the otherwise inevitable cancellation of senior citizens swimming night.

If you qualify as a senior citizen, have a bathing suit handy, and would like to prevent apathy from destroying your opportunity to keep physically fit, go to the new indoor pool Thursday evening, July 8, and show Chelsea that senior citizens do indeed support their swimming session.

COOKBOOK DEADLINE
For all Chapters and individuals duals still interested in entering their recipe in the Bicentennial Cookbook, the deadline has been extended to July 10. Recipes may be dropped off at headquarters or mailed to 218 S. Main St.



MRS. SAM BREITENWISCHER, oldest resident of Chelsea's United Methodist Home, was assigned the honor of cutting the bicentennial flag cake in a 4th of July celebration held there Sunday. She is pictured here initiating the task, the crowning event in full day of bicentennial glorification.

Methodist Home Residents Join In Independence Day Program

Residents of Chelsea's United Methodist Retirement Home celebrated the 4th of July with a special Independence Day program highlighted by the cutting of a Bicentennial flag cake.

Mrs. Samuel (Clara) Breitenwischer, 99, born April 20, 1877, and the oldest resident of the home, performed the cake-cutting honors.

Mrs. Breitenwischer is a former resident of Manchester who came to the Methodist Home in 1966. Her sister, Mrs. Florence Lyon, also lives in the Home.

Mrs. Breitenwischer has three children, Marvin Breitenwischer of Manchester, Mrs. Ruth Randall of Brooklyn, and Mrs. Marian Hanley of Romeo.

'Hello Dolly' Had Rough Time Before Achieving All-Time Fame

"The last shall be first" and "The stone that the builders rejected hath become the chief cornerstone." These are maxims applicable to the checked history of the world's most acclaimed musical hit, "Hello, Dolly," which the Chelsea Players are bringing to the stage of Chelsea High school Auditorium on July 15, with Pat Knickerbocker and Bill Coelius (Dolly and Horace) co-starring as the story's meddling matchmaker and the tight-fisted curmudgeon she sets her cap for, and captures.

"Hello, Dolly" was a double failure in three of its beginnings. And yet it ended up as the most successful smash hit of all musicals in American stage history, running a record seven years on Broadway (minus 19 days) and receiving limitless popularity all around the world.

The musical is Michael Stewart's adaptation of a farce by Pulitzer Prize winning Thornton Wilder, called "The Merchant of Yonkers" when it was first presented in New York. That was in 1938, and at the time the production was a dreary flop.

Usually the failure of a play on Broadway means a quick trip to the morgue. Once it has had its critical opening night, and is found wanting, no amount of revising by the playwright will sustain it. The play is dead.

Not so in this case. Thornton Wilder kept fooling around with the play. He produced a revision of it in London in 1951 under a new title, "The Matchmaker."—and again it was a bust. Undeterred, Wilder went back to his typewriter to tinker further. Three years later in 1954 he and the noted English director, Tyrone Guthrie, collaborated to put on his latest version at the

International Drama Festival at Edinburgh.

And there, at last, it scored a hit—so much so, that the Edinburgh cast was brought to London for a run. "The Matchmaker" ran a smashing eight months. Inevitably New York was tried again, too.

And 16 years after New York had rejected "The Merchant of Yonkers," it took "The Matchmaker" to heart in 1955. Theatergoers thronged to he play for over a year, a total of 489 performances.

In 1933 David Merrick, co-producer of "The Matchmaker" had the notion of turning its comical uproars to the uses of musical comedy. And in that form the tale was repeated a bust at the beginning, a glorious success in the end.

At first the musical was written with the working title of "Call on Dolly," the first words of Jerry Herman's opening lyrics, when a chorus of New York citizens in the 1890's announced that anybody seeking the help of a marriage-broker should simply call on Dolly.

But that title was dropped and replaced by the authors with "Dolly, a Damned Exasperating Woman," the descriptive phrase used by Horace Vandergelder. This title endured briefly, because no matter how gruffly her rich victim regarded her, everybody else thought Dolly was delightful, not exasperating at all. It was then the authors were inspired to use for the song title from the second act, they knew in advance was going to be a showstopper. Under this new title, destined to become world-famous, "Hello Dolly," had its world premiere as a pre-Broadway try-out, in Detroit in November, 1963. Wham—

Huge Crowd Enjoys July 4 At Fairgrounds

A crowd of thousands took part in Chelsea's 4th of July celebration. According to American Legion Commander John Popovich, all attendance records were broken making the day the most successful in the history of the event.

More than 2,000 people enjoyed perfect weather while eating golden brown chicken, cake and ice cream.

The only disappointment came at the end of the fireworks when a giant red, white and blue American flag which was to have soared skyward, never left the ground because of a defect.

The Chelsea Kiwanis Club and the American Legion shared the cost of the \$1,200 fireworks display, aided by contributions from local citizens.

Hopefully, this year's success will allow an even greater display next year.

Broiling of the 1500 chicken halves was expertly handled by Chef Jim Gaken with his crew of Hank and Tim Orbring, Raymond Franklin and Max Mock. Work began at 6 a.m. and continued until the last chicken was sold at 4 p.m.

Also instrumental to the outstanding success of the event were the Chelsea Fair Board, Chelsea's Auxiliary and Regular Police force, Chelsea's Fire Department and the Chelsea VFW under the direction of Commander Byron Smith.

Swim Lesson Class Nearing Capacity

Officials directing the summer swimming program at Chelsea's new indoor swimming pool have announced second session lessons are nearly full. Anyone still interested in enrolling for lessons during this July 12-23 period should register immediately.

Registration may be completed at Beach Middle school anytime during pool hours. Third and fourth session registrations are presently being accepted also.

Because of the high level of interest in adult swimming lessons, the pool will initiate an adult swimming class on Wednesday and Thursday, 8:30 to 9 p.m. Again, these classes are filling fast so any interested adults should register as soon as possible.

Pool officials offer the following clarification of the misunderstanding which has arisen over the definition of family swim sessions. These periods are designed to allow parents to bring their children to the pool for a quiet

swim together; therefore, no one under 18 will be admitted without a parent.

The pool schedule for the week beginning July 12 is as follows:

LESSONS—
9 a.m.-3 p.m., Monday through Friday.

8:30 p.m.-9 p.m., Wednesday and Thursday, adult lessons.

OPEN RECREATIONAL SWIMMING—
3 p.m.-5 p.m., Monday through Friday.

7 p.m.-8:30 p.m., Monday, Wednesday, Thursday.

2 p.m.-4 p.m., Saturday and Sunday.

FAMILY SWIMMING—
8:30 p.m.-10 p.m., Monday and Tuesday.

7 p.m.-8:30 p.m., Friday.

HANDICAPPED SWIMMING—
7 p.m.-8:30 p.m., Tuesday.

SENIOR CITIZENS SWIMMING—
7:30 p.m.-10 p.m., Thursday.

TEEN SWIMMING—
8:30 p.m.-10 p.m., Friday.

Sylvan Taxpayers Form Association To Further Interest in Government

"Sylvan Taxpayers Association" held their organizational meeting during the month of June. This meeting was the culmination of several earlier and informal get-togethers. The Association will be registered as a non-profit organization in the State of Michigan.

Basic goals of the group are listed as follows:
1) Foster increased interest in local government.
2) Provide a formal medium through which member views may be communicated to local government units.

3) Serve as a communication link between local government and area residents.

The Association is planning a "Candidates Night" for the last week in July. Details will be published as soon as they are firm.

Anyone who has an interest in the above goals is invited to contact any of the below listed officers for details on membership application. Dale Messing, president, 475-7370; John Widmayer, vice-president, 475-2181; Ruth Heim, treasurer, 475-1291; Lois Kinsey, secretary, 475-8391.

Air Show Slated Sunday in Ann Arbor

A great Airshow of internationally known championship performers will be held at the Ann Arbor Airport on July 10 and 11. Ground and air activities will highlight each day. The Airshow will feature the famed Red Devils as well as Eddie Green, Jim Mynning, Bob Lyjak, and Bill Barber.

Airplanes used will include the famed Waco Taperwing, the 450 horsepower Stearman, Buckner Jungman and a clipped-wing J-3 Cub, world famous Pitts Special. Ground activities include displays of private and corporate, military, home-built and antique aircrafts.

Radio-controlled model planes will entertain the spectators before and after the airshow. Refreshments may be purchased at the show with all profits going to charitable organizations.

It is suggested that families bring blankets or chairs for the show since there will be no grandstands for public seating.

Advance tickets are available in Chelsea at Gambles, Heydlaufs, Kusterer's, Western Auto, Chelsea Hardware, Groves, and Wallace Wood Insurance office at \$3 for adults and children over 12. Gates will open at 10 a.m. Entrances are at Ellsworth and State Rd., with 12 acres of free parking.



NEW MEDICAL CENTER: The above photo captures the outstanding symmetry and design of the new Territorial Professional Building from the approach of its northern exposure, facing North Territorial Rd. Note how the slope of the building's roof meshes with the natural tree line in the background. Larry Brink of Ann Arbor was architect of the project, constructed by Normco Construction Co. of Jackson. Housing the medical staff housed

in the new center are Dr. Marguerite Scheerer, Dr. Michael Smith, and Dr. Gerald Waldyke. Dr. Scheerer currently writes a syndicated medical column for The Detroit Free Press in collaboration with her husband. She formerly worked at Chelsea Medical Center and University of Michigan Health Service. Presently, the facility offers all services normally ascribed to the family practitioner. Dental care will be available at a later date.



THIS VIEW of the new Territorial Family Medical Center, 8477 Territorial Rd., Dexter, focuses on the building's southern exposure. The center opened Tuesday, July 6. While not a hospital, the Territorial Professional Building has the facilities to perform minor surgery, set casts and frac-

tures, and suture severe wounds. For the convenience of patients, Nell's Pharmacy, located in the basement, will function to expedite the filling of prescriptions. The medical center offers general medical services to the public.

J. Liebeck Honored by Kiwanis International

Chelsea Kiwanian James P. Liebeck was one of three Michigan Kiwanis lieutenant governors to be presented the 1975-76 President's Award in recognition of his "outstanding contribution to the growth of Kiwanis throughout the World," according to Kiwanis International officials. Liebeck, lieutenant governor of Michigan Division

10, is one of 620 lieutenant governors from Kiwanis clubs across the United States.

Presentation was made by Ted R. Osborn, president of Kiwanis International, at the Kiwanis International Convention in San Diego, Calif., June 20-22.

Of the 20,000 Kiwanians attending the convention, 6,000 were registered delegates.



HAMMING IT UP for the camera is the cast of "The Case of the Curious Corpse," Michelle McClear's comedy-drama, murder mystery set in a nursing home. The play will be presented along with two others, featuring graduating actors and actresses of the Children's Theatre Workshop, on Saturday, July 10, 2 p.m. in the Chelsea High school

auditorium. First row, left to right, are Debbie Garmen, Ted Mettel, Phil Powers, and Dan Pennington; second row, from left, Patti Schumann, Mary Vaught, and Karen Miller; third row, from left, Director Michelle McClear, Ann Elscle, and Mike Ward.

The Chelsea Standard Telephone 475-1371
 Established 1871
 Excellence Award By Michigan Press Association
 1951-1952-1960-1964-1965-1966
 Walter P. Leonard, Editor and Publisher

Published every Thursday morning at 300 North Main Street, Chelsea, Mich. 48118, and second class postage paid at Chelsea, Mich., under the Act of March 3, 1879.

Subscription Rates (Payable in Advance)
 In Michigan: One Year \$8.00, Six Months \$4.50, Single Copies \$.20
 Outside Michigan: One Year \$8.50, Six Months \$4.50, Single Copies \$.25

MEMBER National Advertising Representative: MICHIGAN NEWSPAPERS, INC., 257 Michigan Ave., East Lansing, Mich. 48823

NATIONAL NEWSPAPER
 Association - Founded 1895

Uncle Lew from Lima Says:

DEAR MISTER EDITOR:

You never know what you're liable to run into Saturday nights at the country store, Mister Editor. For instance, the fellow that found their places and Ed Doolittle had started to get his clippings arranged in order of their place on the program when Bug Hookum announced he is giving serious thought to buying his old lady a bean sheller. Bug allowed he had saw a ad fer shellers in one of his farm journals and it looked to him like the very thing to get him out of the kitchen and back in the hammock.

Bug's mention of a labor sayer to cut the time he wastes leveling his old lady put up beans both of em know they'll never eat, when he could be resting, set off a discussion that caused Ed to final stuff his clipping bag in his pockets. Actual, it was Ed that took up the subject of inventions. He said he had saw a pea sheller in a TV ad, and he was of a mind that a fellow would spend more time figuring out all them directions than it would take to do the job the old way.

Some folks are mechanical inclined, Clem Webster declared, and some ain't, and he said Ed obvious is among the ain't. Clem recalled back when cigar rollers come on the market Ed never could get the hang of using them little rollers and the rubber blanket, so he stuck to rolling his own till he got to lazy and quit smoking. For his money, Clem went on, his Pa's apple peeler that he keeps in working order still can get the job done easier than a man with a pocket knife. What we've got to get back to, Clem said, is gadgets you don't have to plug in or put batteries in. We've come up with everything from automatic card shufflers to electric fruit ripeners, said Clem, and ain't none of em worth a cuss in places where fellers usual sneak around to play cards.

General speaking, the fellers sided with Clem on the gadget issue. The trouble Zeke Grubb saw was that most inventions nowadays is behind time. He said he had saw where a feller in North Carolina had come up with a one-legged milking stool kinda like a pogo stick you sit on. It may be good fer getting up and down to milk one or two cows, declared Zeke, but it'll go over

Manchester Arts, Crafts Show Slated July 10

Area artists and craftsmen will be displaying and selling a wide variety of items at Manchester's third annual art and craft show Saturday, July 10. From 8 a.m. until 5 p.m. the public is invited to browse among the many hand-crafted items. Craftsmen are displaying leather and copper work, decoupage, hand painted jewelry, sewn pillows and toys, shell objects, and many others. Shoppers may have their children sketched in charcoal or may purchase art work in oil or water colors.

The setting for this year's event is Manchester's lovely Wurster Park just one block west of the downtown business. Plenty of free parking near the pleasant, shady park will give people time to browse. If it rains the Klager Elementary school north on Ann Arbor St. will be used.

This annual event is sponsored by the Manchester Jaycee Auxiliary which uses all proceeds for community youth programs.

Good News for Boys

Women students were first admitted to Michigan State University in 1870, and recently the numbers of women students have been growing at the rate of 1,000 a year. Nationally, MSU is now second only to Ohio State in the number of women enrolled.

Howell Livestock Auction
 Starts 1 p.m. Every Monday
 Mason 677-8941

The Wise Owl Sows Ship to Howell
 Phone 546-2470. Bim Franklin

Market Report for July 5

CATTLE
 Bulk Gr.-Choice Steers, \$37 to \$39
 Few High Choice Steers, \$38 to \$40
 Gr.-Choice Heifers, \$32 to \$35
 Fed Holstein Steers, \$20 to \$25
 Ut.-Std., \$30 and down.

COWS
 Heifer Cows, \$30 to \$31
 Ut.-Commercial, \$25 to \$30
 Canner-Cutter, \$20 to \$25
 Fat Beef Cows, \$26 to \$28

BULLS
 Heavy Polaris, \$32 to \$36
 Light and Common, \$30 and down.

FEDERS
 400-500 lb. Good-Choice Steers, \$36 to \$40
 500-600 lb. Good-Choice Steers, \$34 to \$38
 600-800 lb. Good-Choice Heifers, \$25 to \$31
 300-500 lb. Holstein Steers, \$28 to \$32
 500-800 lb. Holstein Steers, \$26 to \$30

CAVES
 Prime, \$50 to \$60
 Good-Choice, \$40 to \$50
 Heavy Downer, \$20 to \$30
 Cull & Med., \$20 to \$30
 Calves going back to farms sold up to \$38

SHEEP
 Shorn Slaughter Lambs:
 Choice-Prime, Good-Utility,
 Wooled Slaughter Lambs, Spring:
 Choice-Prime, \$45 to \$46.50
 Good-Utility, \$43 to \$45
 Slaughter Ewes, \$40 to \$45
 Feeder Lambs, All Weights, \$38 to \$42

HOGS
 210 to 240 lbs., No. 1, \$52.50 to \$53.40
 240-250 lbs., No. 2, \$51 to \$52.50
 Heavy Hogs, 250 lbs. up, \$44 to \$50
 Light Hogs, 200 lbs., \$35 to \$48

BEARS
 Fancy Light, \$43 to \$43.50
 300-350 lbs., \$43 to \$43.50
 500 lbs. and up, \$42 to \$43

BEARS and Stags:
 All Weights, \$58.50 to \$42

Feeder Pigs:
 250-300 lbs., \$25 to \$40
 300-400 lbs., \$40 to \$48

MAY
 1st Cutting, per bale, 30c to 70c
 2nd Cutting, per bale, 70c to \$1.25

STRAW
 1st Bale, 40c to 60c

COWS
 1st and 2nd Dairy Cows, \$400 to \$600
 1st and 2nd Beef Type Cows, \$250 to \$350

MICHIGAN MIRROR

By Elmer E. White, Secretary, Michigan Press Association

Teacher's Coming
 Circuit rider . . . The term conjures up images of judges trotting their horses through the countryside to do their yearly judicial stunts in a given territory. But don't stop there. Think, as the Department of Education suggests, of the modern circuit rider, alive and well in Michigan this bicentennial year.

This circuit rider is a teacher one who goes from place to place instructing apprentices in the work of seven building trades: electricians, plumbers and fitters, sheet metal workers, iron workers, carpenters, brick masons, painters and decorators.

Michigan's 16 itinerant "circuit teachers" travel some 280,000 miles a year in this co-operative venture between local schools, the construction trades and the State Board of Education.

The program now is in its 40th year.

To qualify for the program, an applicant must have a high school diploma and pass an aptitude test and an oral interview. Once those hurdles are passed, the apprentice generally goes to school the equivalent of one day each two weeks and works at the trade the other nine days. The length of the apprenticeship varies from three to five years.

Michigan has 19 apprenticeship training centers in local school districts and community colleges.

Code Change Sought
 Reshaping, revising, generally leaning up Michigan's criminal code is a massive undertaking. But it's got to be done, according to the chairman of the State Bar committee aiming to do just that.

"Our present code is at times as unworkable as it is ineffective," says the chairman, Circuit Judge Horace W. Gilmore. He notes, for instance, that there is a tremendous incongruity of penalties for various crimes: issuing a bad check in this state carries a 14-year penalty, while felonious assault involves only a four-year penalty.

Michigan has 19 apprenticeship training centers in local school districts and community colleges.

Code Change Sought
 Reshaping, revising, generally leaning up Michigan's criminal code is a massive undertaking. But it's got to be done, according to the chairman of the State Bar committee aiming to do just that.

"Our present code is at times as unworkable as it is ineffective," says the chairman, Circuit Judge Horace W. Gilmore. He notes, for instance, that there is a tremendous incongruity of penalties for various crimes: issuing a bad check in this state carries a 14-year penalty, while felonious assault involves only a four-year penalty.

JUST REMINISCING

Items Taken from the files of The Chelsea Standard

4 Years Ago . . .
 Thursday, July 6, 1972—
 Martin I. Straub of 6899 Madison Rd., a 1972 Chelsea High school graduate, was among the 15 Detroit area citizens and organizations who received national honors from Freedom Foundation at Valley Forge during the annual July 4th Independence Day Celebration. Straub, who will be attending the Air Force Academy in Colorado Springs, Colo., in the fall, received a George Washington Honor Medal for his 1971 Memorial Day speech in a youth public address group.

Since Saturday, July 1, the Chelsea-Dexter area once again has ambulance service stationed in the area. Fontana-Taylor Ambulance Service has been contracted by Washtenaw county for 18 months to provide emergency service. The Chelsea substation is located at 140 W. Middle St.

24 Years Ago . . .
 Thursday, July 10, 1952—
 Barbara Kuhl, whose achievement booth at the Washtenaw county 4-H spring achievement program at Ann Arbor last spring won her the opportunity to compete at the 4-H Club Week activities at Lansing last week, placed in the group of six winners from the lower peninsula who are eligible to compete in the State Show in August.

Wolverine Tavern on Old US-12 West, has changed ownership after 25 years under the ownership and operation of James Batsakes. Announcement was made this week that Joseph E. Merkel and Thomas Merkel, brothers, and sons of J. and Mrs. Joseph R. Merkel, had purchased the business on Wednesday, July 2. It will be jointly operated by them while each will carry on his present occupation. Joseph E. has a milk route and Thomas is employed at Chelsea Manufacturing Corp.

14 Years Ago . . .
 Thursday, July 12, 1962—
 Major General Dwight E. Beach was promoted, effective July 1, to the three-star rank of lieutenant general and at the same time was assigned as Army Chief of Research and Development. He succeeds General Arthur G. Trudeau whose retirement became effective June 30.

With respect to his new responsibilities, General Beach gained valuable experience as Director of the Office, Special Weapons Development, U. S. Continental Army Command. Then came three years as Director of Guided Missiles, Office of the Deputy Chief of Staff for Military Operations at Army Headquarters in Washington D. C. Born in Chelsea, July 20, 1908, the General graduated from Chelsea High school and attended the University of Michigan for two years prior to enrolling in the United States Military Academy.

The resignation of Herbert D. Vogel as chairman of the Tennessee Valley Authority became effective June 30, after he had completed almost eight years in the post to which he was appointed by former President Dwight D. Eisenhower. A retired major general of the Corps of Engineers of the U. S. Army, his

34 Years Ago . . .
 Thursday, July 2, 1942—
 The Peninsular Furnace & Foundry Co. is the first Chelsea industry in which employees are participating 100 percent in the payroll deduction plan for the purchase of United States War Bonds.

The picture of Private Paul Rogers, son of D. L. Rogers of Chelsea, was in the Life Magazine for June 29. Pictures of Paul and Victory Belle Bunny Binks, who was also the girl on the cover of that issue, were taken playing ping pong at the USO headquarters in Dallas, Tex.

Overnight Survival Camp Sessions Are Scheduled

Washtenaw County Parks and Recreation Commission (WPCARC) will sponsor two Wilderness Survival Overnights July 11-12 and July 17-18.

The overnight program focuses on wilderness survival techniques and includes discussions and mini-classes on cooking edible plants, woodcrafting, basic first aid, search and rescue simulation and orienteering.

The overnights, planned in response to the over-subscribed wilderness survival clinics this spring, will be held at Park Lyndon, an area of 200 hilly, wooded acres containing a small lake and a bog with many species of insect-eating plants. Park Lyndon is located on North Territorial Rd., just past M-52 in Lyndon township.

Participants will need sleeping bags, but materials for the construction of shelters will be provided by WPCARC. Participants will forage for other materials to complete the shelters as a part of the survival technique classes.

The overnights begin 10 a.m. Saturday and will end 3 p.m. Sunday. Meals are included. The cost for each overnight is \$15 per person. Families are invited but children should be at least 13.

Participants must register in advance through WPCARC at Box 645, Ann Arbor 48107; phone 994-2375.

Dial-A-Garden Topics Listed

Dial-A-Garden, the system of pre-recorded daily gardening tips is sponsored by the Washtenaw County Co-operative Extension Service. The system is in operation 24 hours per day, 7 days per week. Interested persons are invited to call 971-1122 at their convenience and receive timely, up to date gardening information.

Next week's Dial-a-Garden topics are:

Friday, July 9 and week-end—"Garden Tips for July."
 Monday, July 12—"Strawberry Renewal."
 Tuesday, July 13—"Black Walnut Toxicity in Plants."
 Wednesday, July 14—"Hot Weather Care of New Trees and Shrubs."
 Thursday, July 15—"Iron Chlorosis in Plants."


VOTE WISELY ON AUG. 3
GET THE BEST AVAILABLE
FAY JOHNSON
FOR SHERIFF

25 Years with the State Police.
 Ypsilanti Post Commander for over 5 years.

RESPONSIVE - RESPECTED - RESOURCEFUL
 — REPUBLICAN —

Paid for by the Fay Johnson for Sheriff Committee
 HOWARD WIKEL, CHAIRMAN JOHN GREEN, TREASURER

You can put your money in one of these certificates and forget it.



6 1/2% 6 3/4% 7 1/2% 7 3/4%

Interest per annum. PASSBOOK CERTIFICATE. 12 Months Term. Minimum Deposit \$1000. With quarterly compounding, effective annual rate 6.66%.

Interest per annum. PASSBOOK CERTIFICATE. 30 Months Term. Minimum Deposit \$1000. With quarterly compounding, effective annual rate 6.92%.

Interest per annum. PASSBOOK CERTIFICATE. 48 Months Term. Minimum Deposit \$1000. With quarterly compounding, effective annual rate 7.21%.

Interest per annum. PASSBOOK CERTIFICATE. 72 Months Term. Minimum Deposit \$1000. With quarterly compounding, effective annual rate 8.03%.

Federal regulations require substantial penalty for early withdrawals from passbook certificate accounts.

NO WORRY, NO MARKET WATCHING, NO MANAGEMENT FEES, NO PRINCIPAL FLUCTUATIONS, JUST RELAX AND COLLECT INTEREST

ANN ARBOR FEDERAL SAVINGS

11 OFFICES TO SERVE YOU IN ANN ARBOR, CHELSEA, DEXTER, YPSILANTI, MANCHESTER, BRIGHTON, SALINE

Member FSIC

BEEF SALE!

BEEF SIDES 350-Lb. Avg. **lb. 89¢**

Cut, wrapped, frozen — ready for pick-up

Includes —

10 round steaks	6 chuck steaks	3 arm round roasts
8 sirloin steaks	12 rib steaks	2 English roasts
6 porterhouse steaks	2 rib roasts	6/2 lb. short ribs
12 T-bone steaks	4 rump roasts - boneless	6/1 lb. boneless beef stew
6 sirloin tips	5 chuck roasts	80 lb. hamburger
3 swiss steaks		

CUTTING STATEMENT FURNISHED

- SPECIAL -

HOT DOGS

HAMBURG PATTIES

\$5.00 OFF

WITH PURCHASE OF SIDE OF BEEF

With Coupon

PHONE 426-8466

DUNBAR'S **DEXTER LOCKER**

8083 MAIN ST., DEXTER PAUL DUNBAR, OWNER



VIRGINIA KING, export operations supervisor for Dana World Trade Corporation Mobile Equipment Group at Chelsea, will begin retirement July 31. Mrs. King was first employed by Chelsea Products Co. in 1946, prior to Dana's acquisition. She began as secretary, and continued to serve as sales office manager, sales operations manager, and sales engineer prior to her most recent assignment.

At a retirement party held for Mrs. King, plant manager Ron Bollet presented her with a gift certificate in citation of her long and outstanding service. Friends and fellow employees honored her with gifts, cake and ice cream. Pictured to the right is Virginia King receiving her gift certificate from Ron Bollet.

Belleville Man Arrested on Felony Charge

Ronald L. Geis of Belleville, was arrested Sunday, July 4 by Patrolmen McDougall and Yager of the Chelsea Police Department on charges of malicious destruction of property when he smashed his feet through the window of a patrol car.

According to police reports the incident began while Sgt. McDougall was standing at the intersection of S. Main and Old US-12, directing traffic to the 4th of July fireworks display at the Chelsea Fairgrounds. Geis, driving a 1968 Buick, was northbound on Main. The officer went to stop northbound traffic by waving his flashlight at the closest vehicle. Geis, the foremost of those heading north began to slow as if to stop. Sgt. McDougall glanced away to check on traffic traveling in the opposite direction, returned his gaze to the northbound lane to make sure the vehicle driven by Geis had indeed stopped, when he noticed Geis still moving, slightly across the center line. Geis continued moving, brushed against Sgt. McDougall as he jumped into the southbound lane to keep from being hit, and maintained his course north on Main at a speed of 20-25 mph.

Sgt. McDougall got into his patrol car, parked nearby, started off in pursuit of Geis, and pulled up behind him with his lights flashing. The vehicle driven by Geis would not slow or stop, forcing McDougall to pass and stop in front of Geis, at which point the Geis vehicle halted.

The patrolman then approached the vehicle and asked Geis for his operator's license. Geis who was having some difficulty in standing upright, began fumbling in his wallet for the license. In the officer's opinion, Geis appeared to be intoxicated. McDougall informed Geis he was to be arrested on charges of driving under the influence of liquor, and proceeded to place handcuffs on Geis.

Geis began a struggling match to resist arrest, which ended when Deputy Collier of the Washtenaw County Sheriff's Department, in his own truck behind the stopped traffic, assisted with the handcuffing. Geis was then put into the police car.

While officers went back to Geis' stopped vehicle to check on the condition of the passengers, Geis began kicking the screen and window of the patrol car. He was barefooted.

By the time the officers could reach the patrol car, Geis had kicked out the window of the officer's vehicle. The officers responded by handcuffing and seatbelting Geis down, then drove him to jail whereupon he was issued a felony warrant for malicious destruction of property.

Bicentennial Baby Daughter Born To Robert Pontes

Mr. and Mrs. Robert Pontes of Chelsea announce the birth of a daughter, Maya Louise, July 4, as the entire nation celebrated the bicentennial of our independence.

Pontes, a Chelsea attorney, concluded the preliminary examination of one of his clients during a session of the 14th district Court in Saline, then added the announcement of his daughter's birth to court records.

With the announcement, and in light of her well-appointed entry into the world, rumor spread, according to Pontes, that Maya Louise would be elected first woman president of the United States. Judge Henry Arkinson replied to the rumor: "Knowing you, Mr. Pontes, I wouldn't be surprised."

Paternal grandparents of the newborn are Mr. and Mrs. Adam F. Pontes of Ypsilanti. Maternal grandmother is Mrs. Jacquelyn Kallenbach of Ann Arbor.

Michigan State University's School of Packaging, the first of its kind, is the major consulting source for the packaging industry of the world.

New Auto-Truckstop Opening Saturday

A new Dexter Auto-Truckstop Plaza, planning its grand opening 9 a.m. Saturday, July 10, at I-94 and Baker Rd. is expected to disperse 4 million gallons of diesel fuel over the coming year, along with "bottomless" cups of coffee to all truckers, motorists, and area residents stopping at the station.

The \$3 million Union Oil complex, staffed by about 100 employees, will feature a 204-seat restaurant, open 24 hours, a large travel store complete with jewelry, drug items, and clothing, 19 fuel pumps, motel rooms, and a three-bay service garage on 10 acres of blacktop.

Donald E. Angst, involved with truckstop operations for five years, is president of Wolverine Truck Plaza, Inc., current franchise owners of the facility.

Limitless comfort to "highway cowboys" has been the dominant schematic factor in the construction of the truckstop. The 18 motel rooms for truckers include color TV and private showers for \$10 a night.

Fueling will be handled by a controller inside the main building, using a sophisticated electronic pump monitoring system.

The machinery computerizes fuel allowances and prints out validated gas sales receipts to assure fleet owners their gas dollars are indeed buying gas.

According to Angst, an 85-foot light tower will illuminate the complex, and a CB base station will monitor radio traffic along I-94.

Any speaker, or writer, who pleases everyone says nothing.

The Sanilac bean, developed by Michigan State University in co-operation with the U. S. Department of Agriculture, revolutionized the bean industry in Michigan with its higher yields and resistance to disease.

Michigan State University students ease the lonely hours of senior citizens through the "Adopt-a-Grandparent" program. The volunteer program won a national award from the National Center for Voluntary Action.

OFFICIAL NOTICE

SPECIAL MEETING OF THE DEXTER TOWNSHIP BOARD

will be held

TUESDAY, JULY 13, 1976 - 7:30 p.m.

at the Township Hall, 6880 Dexter-Pinckney Rd.

Item to be discussed:

National Flood Insurance application.

WILLIAM EISENBEISER
Dexter Township Clerk

Hello Dolly' Trials

(Continued from page one)

The character of Dolly was deepened and humanized into a wide-eyed, undaunted by hardships, determined to snatch some happiness before the parade passes by. The show broke the record of "My Lady" on Sept. 9, 1970. To mark this, George Hirsch, publisher of New York magazine, and long-distance runner in his spare time, ran the 14.2 miles from the city hall in Yonkers, to Dolly's hard-to-catch husband, to Dolly's home at the St. James Theatre in New York, carrying a scroll of greetings from the mayor of Yonkers to the mayor of New York and David Perlick. A marathon run for a marathon musical.

DiAnn L'Roy, director of the Chelsea Players' production, says, "This is the most extravagantly staged musical we have done in the history of plays in Chelsea. The sets feature an 18-foot runway projecting into the audience, a tri-level feed store and numerous other structures as well as props. The costumes, designed by

Laura Miley, are elaborate and beautiful. Joan Yocum, who has choreographed several productions both here and at Eastern, has simply outdone herself. The entire cast is without any weaknesses. Don't miss seeing "Dolly" starting on July 15.

Tickets are on sale at Chelsea Pump & Pantry. All seats are reserved.

New Medical Center Opens On Territorial

Territorial Medical Center on North Territorial Rd., near Dexter-Pinckney Rd., opened Tuesday, July 6.

The newly constructed, modern design offices is staffed by general practitioners Dr. Jerry Wal-dyke, Dr. Michael Smith and Dr. Marguerite Scheerer.

Society Now Tougher On Juvenile Offenders

The kid who tipped over an outhouse in the old days got off a lot easier than the youngster who today borrows a neighbor's car for a joyride.

One of the reasons for the change in attitude toward young offenders, says a Michigan State University professor of criminal justice, is that small towns have become big anonymous cities. Neighbors seldom know each other or share neighborhood concerns.

In the old days the community and parents involved were apt to provide an informal punishment and cure, says Robert Trojanowicz. Today, it's more complicated and there is a more efficient system of recording crimes.

Trojanowicz sees possible solutions to juvenile crime in a renewal of community relations in smaller cities and in neighborhoods of larger cities.

However, repeaters of serious crimes, he emphasizes, still need to be jailed.

Life is the only game in which each individual makes his own rules.

FLYING CIRCUS AIR SHOW

SATURDAY and SUNDAY

JULY 10-11

ANN ARBOR AIRPORT - 12 to 4 p.m.

Featuring the Red Devils
World's Top Acrobatic Pilots

GATES OPEN AT 10 a.m.
FOR AIRCRAFT DISPLAYS
AIR SHOW STARTS AT 12 NOON

Sponsored By Ann Arbor Southeastern Kiwanis Club
Assisted By Chelsea Kiwanis Club.

SAVE TIME AT THE GATES
BUY YOUR TICKETS NOW!

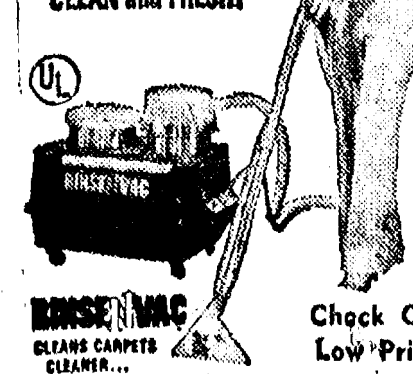
ADULTS \$3.00 CHILDREN Under 12 FREE

Tickets Available at

GAMBLES KUSTERER'S MARKET
HEYDLAUFF'S WALLACE WOOD INS.
WESTERN AUTO
GROVES 5 and 10 CHELSEA HARDWARE

BET PROFESSIONAL carpet cleaning results! (As do-it-yourself prices)

RENT OUR RINSEVAC—the new portable, easy-to-use hot water extraction carpet cleaning machine that gently...
• rinses carpet fibers with hot water and cleans solution
• loosens and lifts dirt, grime and residue to the carpet surface where they are immediately vacuumed up
• leaves your carpets CLEAN and FRESH!



Check Our Low Price
GAMBLES
110 N. Main Ph. 475-7472

U.S.D.A. CHOICE BEEF ROUND STEAK

WHOLE ROUND . . lb. \$1.49

TOP ROUND . . . lb. \$1.59

CUBE STEAKS . . . lb. \$1.59

RIB STEAKS . . . lb. \$1.49

SIRLOIN STEAK . . . lb. \$1.89

PORK BUTT ROAST . . lb. \$1.09

PORK STEAK . . . lb. \$1.19

HICKORY SMOKED SLAB

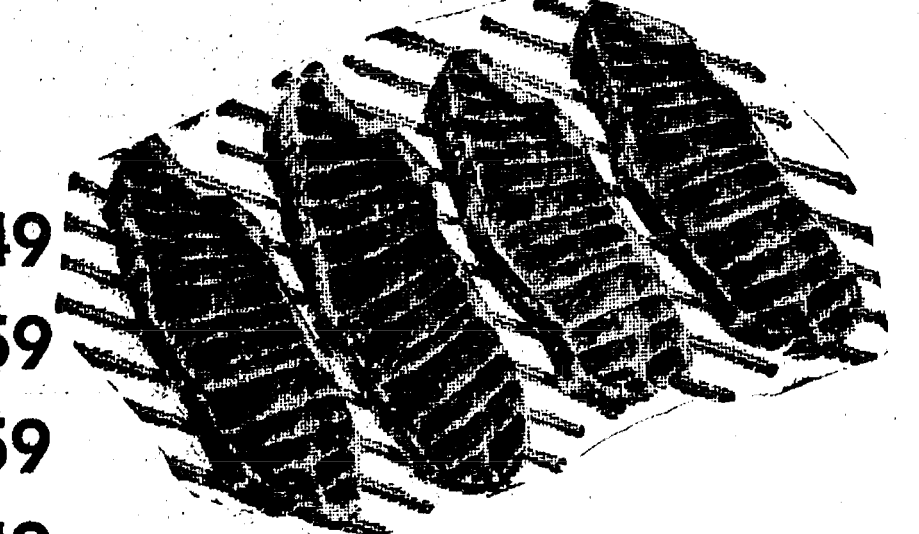
BACON . . . lb. \$1.09

YOUNG, TENDER

BEEF LIVER . . . lb. 49c

HOME-MADE

FRESH SAUSAGE . . . lb. \$1.19



Tender Beef with Flavor!
MAHOGANY FARM BEEF
From Dugdale Packing, St. Joseph, Mo.

FARMER PEET SPECIAL!!

SKINLESS BEEF FRANKS 1-Lb. Pkg. 99c

HAMBURGER MADE FROM GROUND ROUND . . . lb. \$1.29

HAMBURGER MADE FROM GROUND CHUCK . . . lb. \$1.19

FARM MAID HOMOGENIZED WHITE MILK Gallon \$1.39

HOLSUM Dark Breads 1-Lb. Loaves 49c

Rye - Wheat Whole Wheat

NABISCO SNAX CRACKERS 7 varieties 5-Oz. to 10-Oz. 59c Box

FARM MAID COTTAGE CHEESE 12-Oz. Ctn. 39c

CALIFORNIA HEAD LETTUCE Large Heads 29c

ALL BRANDS, ALL SIZES CIGARETTES . . . Ctn. 10 Pk. \$3.89

FARM MAID SOUR CREAM 1 Pt. Ctn. 49c

LIQUID IVORY 22-Oz. Bottle 69c

VELVET Peanut Butter Smooth or Crunchy 2-Lb. Jar \$1.29

KELLOGG'S CORN FLAKES 12-Oz. Box 39c

WONDER COUNTRY STYLE BREAD . . . 1 1/4-Lb. Loaf 29c

JIFFY MEAT SERVICE CUSTOM CUTTING, WRAPPING, FREEZING. QUICK SERVICE ON BUTCHERING — YOUR BEEF OR OURS.

★ U.S.D.A. CHOICE SIDES OF BEEF
★ LOCAL FARM GRAIN FED BEEF AVAILABLE
★ FRONTS - HINDS - WHOLE RIB - WHOLE LOINS

JIFFY MARATHON GAS PUMPS OPEN 7 DAYS - 7 a.m. to 10 p.m.

Regular Gas or Premium Gas (Gas prices include all taxes)

THANK YOU — We Appreciate Your Business!

Open With Complete Service, 7 Days A Week
TOP VALUE FOODS 7 a.m. MORNING to 10 p.m. NIGHTS
Salo Prices July 8 Thru July 13

Federal Highway Act established first Interstate Highway System in 1925. U.S. Supreme Court in 1936 ruled that states cannot refuse to license vehicles using Interstate highways within their borders.

Michigan State University, in one of the largest international projects in its history, is engaged in a five-year, \$7 million program in agricultural higher education in Brazil.

CHelsea GLASS WORKS

WORKMANSHIP AND MATERIALS FULLY GUARANTEED.
Open Daily 8 a.m. to 5 p.m.; Sat., 8 a.m. to 1 p.m.

140 W. Middle, Chelsea Phone (313) 475-8667

WE REPAIR AND REPLACE:

- ★ STORE FRONTS
- ★ FURNITURE TOPS
- ★ SHOWER DOORS
- ★ THERMOPANES
- ★ AUTO GLASS - Including Windshields
- ★ MIRRORS
- ★ PATIO DOORS
- ★ TUB ENCLOSURES

Free Pick-up and delivery on auto work.
Storm Door & Window Reglazing & Screens
COMMERCIAL BUILDINGS OR RESIDENTIAL
PROMPT SERVICE REASONABLE PRICES

COUNTRY CRAFTIQUE

Complete line of
CALICO
and quilting supplies.

- Also -

Yarn, needlepoint, macrame,
and gifts.

Come By and See
Our Country Displays.

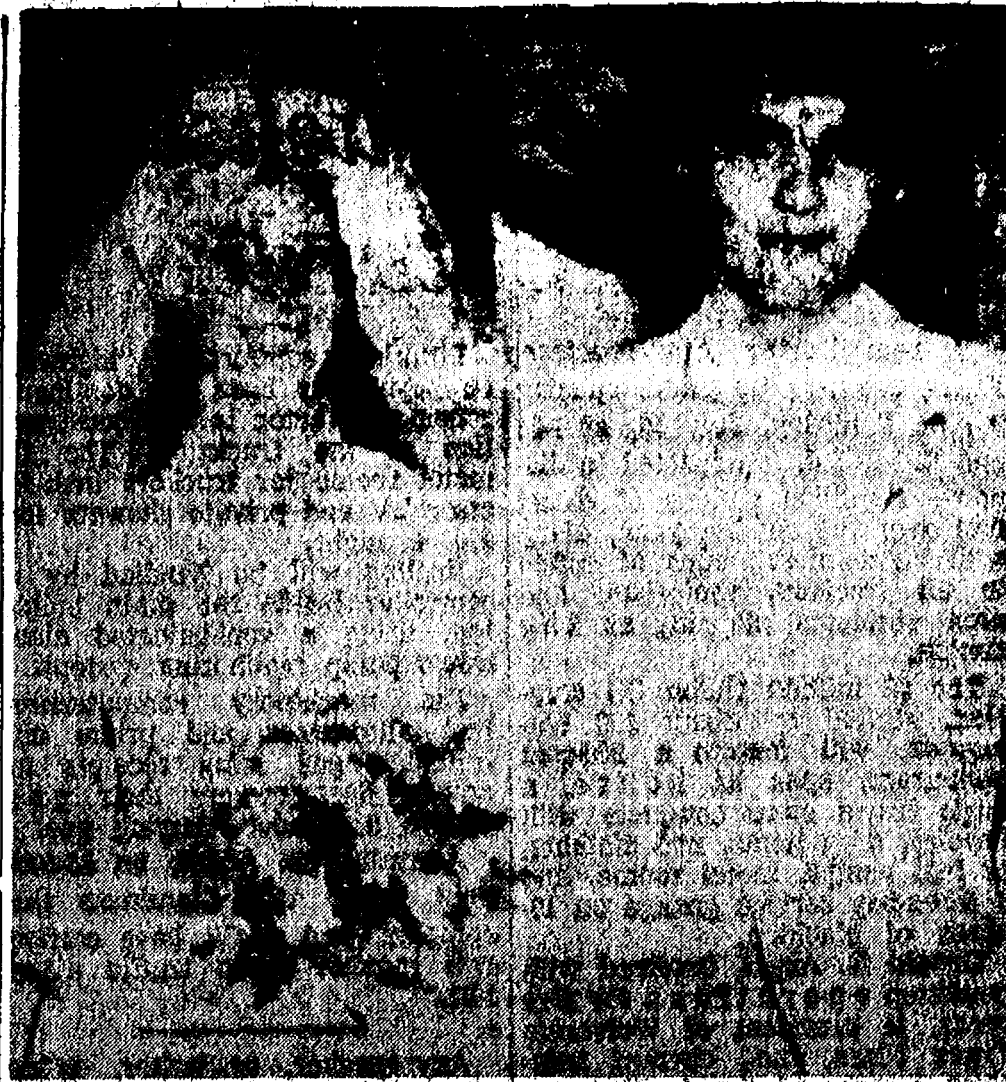
COUNTRY CRAFTIQUE

103 N. MAIN CHELSEA PH. 475-2512

Hours: M to Th - 9:30 to 5:30; F - 9:30 to 8:30; S - 9-5

PROPRIETORS:

BONNIE JAMES PHYLLIS NYE



Mr. and Mrs. Leonard C. Koch

Lois M. Lovely, Leonard Koch Wed at Assembly of God Church

Lois M. Lovely, daughter of Mr. and Mrs. Elwood Lovely, 519 Lane St., married Leonard C. Koch, son of Mr. and Mrs. Leonard Koch, 14288 Old US-12, in First Assembly of God church Saturday, June 26.

The Rev. T. B. Thodeson performed the ceremony.

Serving as maid of honor was the bride's sister, Brenda K. Lovely. Bridesmaids were Anne M. Kallish and Darlene Jarvis, both of Chelsea.

Larry Wahr was best man. Ushers included Lucas Lovely, brother of the bride and Charles Koch, brother of the groom.

Following the ceremony, a reception was held at Union Hall in Chelsea.

The couple left for a honeymoon to Niagara Falls. They will reside on Main St. upon their return.

Delegation Attends VFW Convention

Michigan's oldest city, Sault Ste. Marie, hosted more than 5,000 Michigan Veterans of Foreign Wars Post and Auxiliary members, June 23-27, during the 57th annual VFW State Convention.

Pat Carr, a Louisiana attorney and past Commander-in-Chief of the national VFW, was the men's national representative, while the Ladies' Auxiliary national representative was Barbara Bishop, resident of Allen Park and national director of the Cancer Aid and Research Program.

This state convention marked the 49th annual State Convention attended by the Ladies' Auxiliary. Eighteen past Department of Michigan presidents were able to attend.

Throughout the day on Friday, members of VFW conducted business sessions, voting on several resolutions pertaining to the veteran and his family. Foremost among the resolutions passed was one calling for the retention of Kincheloe Air Force Base, a subject of state-wide debate. Other policy-making resolutions focused on veterans' burial allowances, VA death benefits, employment, illegal aliens in the U.S., national VFW cemeteries in each of America's 50 states, and American defense.

A "hands off" resolution, also passed, called for VFW supported veterans in the VFW National Home in Eaton Rapids to remain VFW supported rather than come under the authority of Michigan's Parades, dedications, and other ceremonies were held on Saturday, including the dedication of a VFW Bicentennial Marker on I-75 at the International Bridge.

The annual convention parade featured the Sault's famed World War I Drum and Bugle Corps, and was followed by a Pageant of Drums competition. Winners of the contest were Pe-

loskey's Midshipmen, who put on a banner waving show to complement their marching band at the installation of new officers ceremony. According to Chelsea's VFW vice-commander Kermit Sharp, the Midshipmen were "really superb and loud."

Attending the convention from Chelsea along with Sharp were VFW Post 4076 Commander Byron Smith; senior vice-commander Jim Barnes; Fremont Boyer; Ken Platt; Bill Pierce; and Mac Packard. Auxiliary members from Chelsea's VFW Post 4076, also in attendance, were president Betty Smith; past president Joan Barnes; Gerry Klink; Lucy Platt; and Eulalie Packard. The American flag and the banner of the local group were carried in the hour-long Saturday parade.

Mac Packard and VFW Post 4076 were awarded a second-place trophy for having the most outstanding local VFW chapter newsletter, sent monthly to each member.

On their way back to Chelsea, members of the local VFW chapter stopped off to do some sight-seeing at Indian River, visiting the Call of the Wild museum. They concluded the trip with strategic stops at various points of interest along the highway home.

Residential - Commercial REMODELING

FREE ESTIMATES

**ib V. JENSEN
and SON**

LICENSED BUILDER

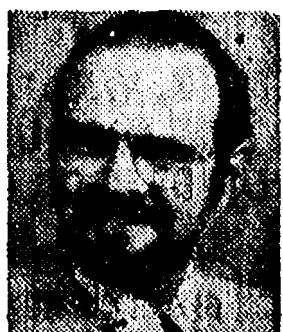
378 Spring Lake Drive
Chelsea, Mich.
PHONE 475-1820

Because your home is
not just a house



CountryEstate

Broader coverage for Chelsea homes, acreages, small farms and rural living. Covers many things not protected by homeowners... often at a lower premium. Let us show you.



Dave Rowe

I'm at 107 1/2 S. Main in Chelsea.
Stop in or phone 475-8066.



Farm Bureau Mutual • Farm Bureau Life • Community Service Insurance

Twins Lead Field in Girls Softball Play

In three separate girls softball games played Thursday, July 1, the Indians, Reds, and Twins defeated their opponents with overwhelming victories in some highly packed action on the sandlots.

Final scores were: Indians 17, Braves 6; Reds 19, Yankees 8; and Twins 10, Angels 4. Reds' players Rae Aplado and Tracy Juntien led their team in hits, sending the ball off into the field a total of three times each.

In Tuesday's games, July 6, the Braves defeated the Reds, 7-1, led by Kathy Brown who smacked the ball for three hits, and Katie Lewis who pushed the final score forward with two hits.

The Twins confronted the Yankees, to win by a resounding 19-4 score. Patty Hume dominated the game with a home run and a triple to pace the Twins, while Ann Eisele and Cara Feeney each chipped in two hits.

In a game pitting the Angels against the Athletics, the Angels seemed invincible as they surged forward to win with a final score, 13-3. Angels pitcher Nanette Push, struck out eight bat-

ters, backing up her fine pitching performance with two hits. Other Angels players Anita Powell and Rita Drew, responded to the power of their team's play by each tallying up two hits also. Anne Alella hit a triple to win the game for the Angels.

GIRLS SOFTBALL

Standings as of July 6

	W	L
Twins	3	0
Angels	2	1
Indians	1	1
Athletics	1	1
Braves	1	2
Reds	1	2
Yankees	0	2

Softball League

Standings as of July 5

FAST PITCH

	W	L
Chelsea Merchants	6	0
Thompson's Pizza	5	1
Ann Arbor Centerless	4	0
Hackney & Bennett Inst.	4	3
Jiffy Mix	2	4
Dunlavy-Krull Const.	2	4
Chelsea Milling	0	5
Zion Lutheran	0	6

"A" LEAGUE SLOW PITCH

	W	L
McCalla Feeds	6	1
Walt's Barber Shop	6	1
Eagles	3	2
Village Motors	3	2
I.P.S.C.O.	2	2
T. & R. Pallets	2	4
Huron Valley Walls	2	5
Norm's Body Shop	0	6

"B" LEAGUE SLOW PITCH

	W	L
Wolverine Bar	7	0
Ganja Oil	4	2
Mark IV	3	3
Lloyd Bridges Chev.	3	3
Federal Screw Works	3	3
R.E.T.S.	2	4
Hanco	1	6

NOW OPEN

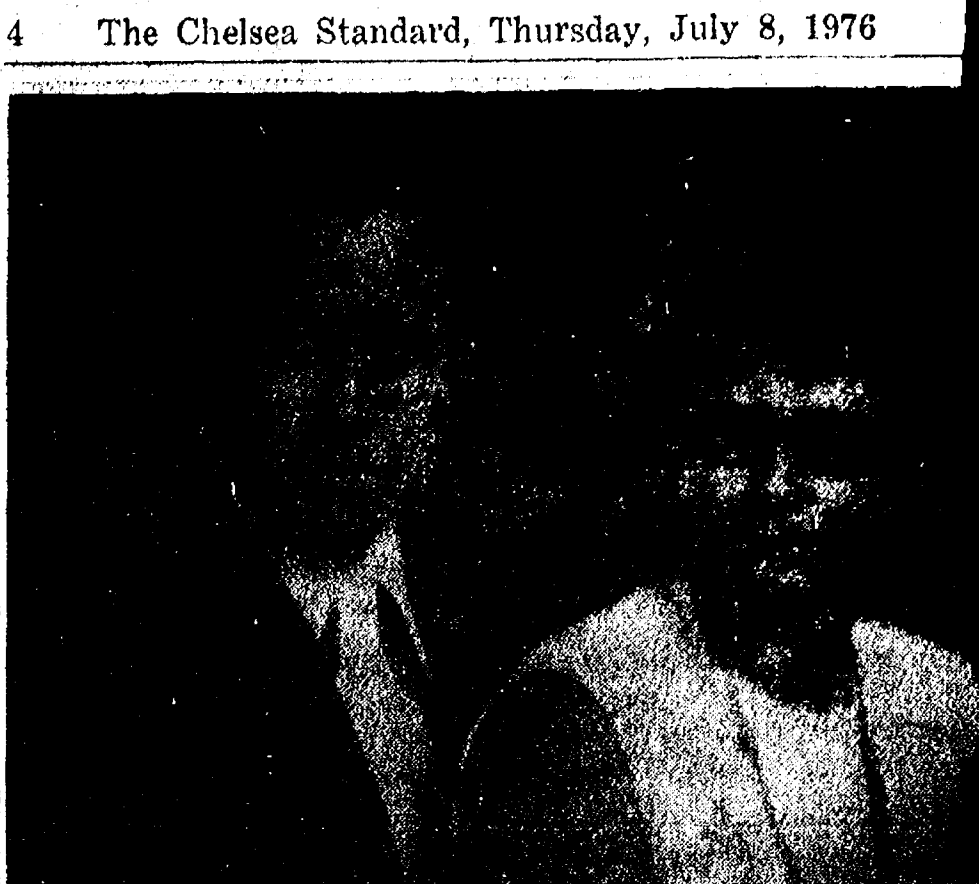
THE GLASS BARN

OLD & NEW GLASS
ANTIQUES
& COLLECTIBLES
DEPRESSION GLASS
A SPECIALTY

ARLENE HARGRAVE

12719 Roeppke Rd.
Gregory Ph. 498-2849

OPEN: by chance
or appointment.



25th WEDDING ANNIVERSARY: Mr. and Mrs. Lushin Salyer of 7128 Sharon Hollow Rd., Manchester, celebrated their 25th wedding anniversary on June 29. The Salyers were married June 29, 1951 by the Rev. Wm. H. Skentlebury in Chelsea. Lushin is employed by Federal Screw Works in Chelsea. He also farms at his home in Manchester and currently is a candidate for sheriff of Washtenaw county. Joann is employed by the Ford Motor Co. in Saline. They have one son, Larry, still at home.

Receives Scholarship Grant from WMU

Brian D. Smith, 7776 Werkner Rd., was one of more than 390 current students at Western Michigan University to be awarded an academic scholarship for the first time by Western's student financial aid and scholarship office. The scholarship is effective beginning fall semester, 1976. Individual awards range from \$100 to \$700 annually, depending on financial need, and are renewable throughout a student's college career if adequate grades are maintained. Financed from Western's general fund budget the stipends are intended to reward academic excellence.

Subscribe today to The Standard

Thinking CARPET? Think SCHNEIDER'S

Visit the wonderful world of carpeting at Schneider's, one of the area's finest, full-service carpet stores, conveniently located in West Ann Arbor on Wagner Road between Jackson and Liberty.

Schneider's carries a broad selection of quality, name-brand carpets at prices consistently among the lowest in the entire area. Try us.

662-9332

OPEN MON & FRI NIGHTS TIL 8:00 PM

SCHNEIDER CARPET CO. INC.

745 S. WAGNER RD. ANN ARBOR

SALE FLOOR CLEARANCE

Goods already 1/2 off will be slashed again and again to make room for this year's new sale merchandise.

**SUMMER TOPS - BATHING SUITS
FALL COORDINATES - SHELLS
SHOES - HOUSE DRESSES
MEN'S SHIRTS**

(Children's sizes 6 to 6x, Girls 7-14)

DANCER'S

Chelsea's Friendly Dept. Store



We have in stock 56 colors of exterior Dutch Boy paint along with Bright White, Super White, Gloss White, Sash and Trim White and Latex White.

\$1.00 OFF REG. PRICE
ON ALL EXTERIOR PAINTS
DURING THE MONTH OF JULY

MERKEL HOME FURNISHINGS

Girl Scout Campers Mark Bicentennial

Fireworks were not the only Bicentennial celebration activity to light up the skies on July 4th. More than 10,000 campfires were set ablaze precisely at 10 p.m. Sunday as the nation's youth campers joined in marking the country's 200th anniversary.

Business Women's Association Chapter Installs Officers

American Business Women's Association installed a chapter in Chelsea on Tuesday June 22. The new chapter was sponsored by the Apollo Chapter of Jackson.

Barbara True of 2873 Henry Rd. Jackson, past national vice-president of District V, conducted the installation ceremonies. Twenty-six charter members were installed into the group to be led by the following officers: president, Betty Koch, 12255 Seld Church Rd.; vice-president, Edith Brooks, 201 Mills Ave., Stockbridge; treasurer, Wanda Walz, 8 Cavanaugh Lake Rd.; recording secretary, Gail Salyer, 310 W. Middle; and corresponding secretary, Joy White of Grass Lake.

Also in attendance were two guests from the Embury chapter of Ann Arbor and 25 guests from the Apollo chapter of Jackson. The next meeting will be July 27 at 7 p.m.

The national firefighting was sponsored by the American Campfire Association with the support of Girl Scouts of the U. S. A. Locally, more than 100 Girl Scouts attending the Huron Valley Girl Scout Council's Camp Linden in Livingston county gathered around their Bicentennial campfire and sang patriotic songs, according to William Schiller, camp director.

Girls attending the resident camp session at the 400-acre camp near Howell, come from communities throughout Washtenaw, Livingston and western Wayne counties. Campers representing the Chelsea area were: Kathy Haydock, Kathy Degener, Teresa Hoffman, Tina Mund, Verita Scott, Michele Clark, Teresa Degener, all of Chelsea, and Teri May of Manchester.

The celebration of the Bicentennial by Girl Scout campers is particularly appropriate, according to the Huron Valley Girl Scout Council, because the organization is one of only two youth groups, the other being Boy Scouts of America, to have been awarded a Congressional Charter.

Girl Scouts of the U. S. A. was granted the charter by a special act of Congress in 1950, and reports annually to Congress on the activities, receipts, and expenditures of the corporation.

Purpose of the organization as stated in the Congressional Charter is "to maintain standards for the movement which will inspire the rising generation with the highest ideals of character, patriotism, conduct and attainment."

With more than two and one-half million girls enrolled, Girl Scouts is the largest organization of women and girls in the country. The Huron Valley Council, a United Way service, currently serves more than 17,000 girls each year.

Bicentennial Notes

HOOP, STICK RACE

The Flaming Belles have challenged the Backroom Bustles to a Hoop and Stick Race at the Chelsea High school track, 1:30 p.m., Saturday, July 17.

All other Belle chapters are invited to barrel in on the fun by joining the contest. Six ladies, each dressed in bicentennial garb, will be needed per team.

Anyone interested in competing is asked to call Nadine Koch, 475-7319, before 12:00 noon, July 16.

SOFTBALL CHALLENGE

Attention Belle Bottom Belles: Put on your crazy socks and start practicing softball again because we, the Whisker Sufferettes, do hereby challenge you to a softball game at Chelsea High school 2 p.m. Aug. 1. Answer our challenge in this column next week and we will contact you with further details.

Whisker Sufferettes.

Arts & Crafts Show Scheduled Sunday in Dundee

Dundee Arts and Crafts Club is sponsoring its 14th annual Arts and Crafts exhibit Sunday, July 11, from 10 a.m. to 6 p.m. on the grounds of the Old Ford Mill (Wolverine Park) Dundee.

It is located at the Junction of US-23 and M-50. In the event of inclement weather, the show will be held one week later, July 18, at the same location and time.

Admission is free and the Dundee Optimist Club will be operating a concession stand on the grounds, where light refreshments may be purchased. There are restrooms on the grounds.

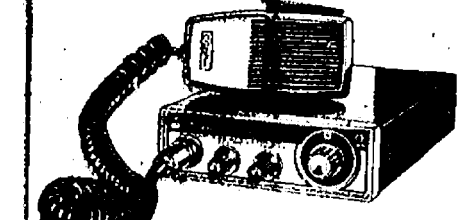
Exhibits will involve artists from many states, displaying hundreds of fine art and craft items. Exhibitors will be able to enter their various works for judging, with award ribbons to be presented in many categories, including "Best of Show."

Breakthru from Cobra!

NOW-CITIZENS BAND

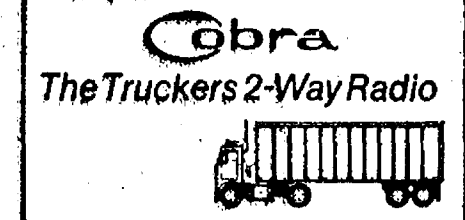
RADIOS AT A PRICE

YOU, TOO, CAN AFFORD!



For your car, truck, boat, home or business...

- Dynamike-RF Gain Control
- Plug-in Jack-External Speaker
- Squelch & Tone Control
- Mini-Size-Maxi-Talk Power
- Weighs only 2.2 lbs. Installs anywhere.



WESTERN AUTO
at CHELSEA LANES
475-1721

HOUSE OF ORIENT BEAUTY SALON

107 W. MIDDLE PH. 475-8196

JULY SPECIAL!

\$5.00 OFF - All Permanents
(includes cut and set)

\$5.00 OFF - All Frostings
(includes toner and set)

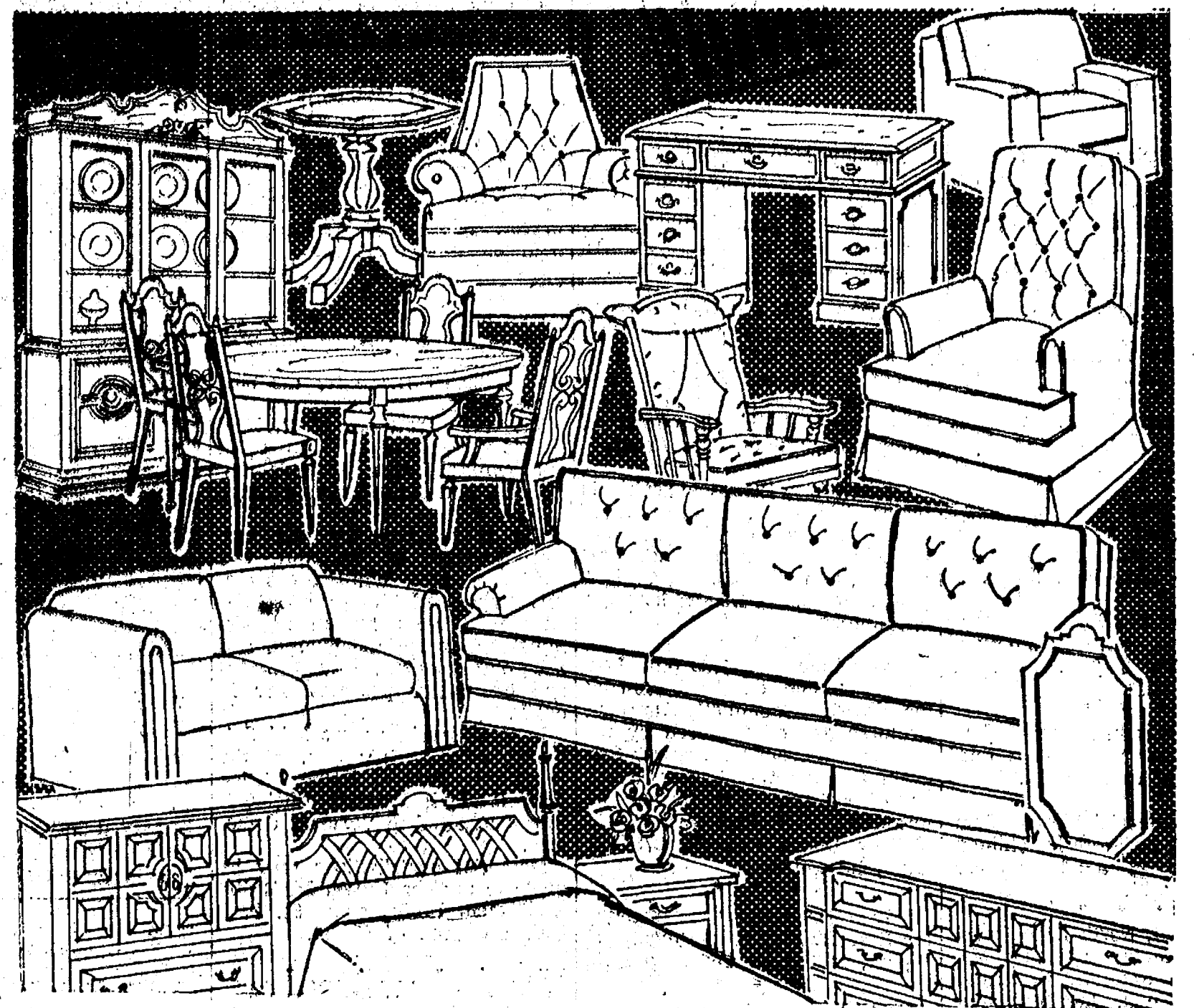
MEN'S HAIRSTYLING - \$4.00

— ALSO —

We have quite a selection of the new "curly-look" wigs by Eterna and Kanekalon. Come in and try 'em on! Only \$16.00. Great for vacations. Easy to care for.

Carolyn, Charlotte and Nola
Ph. 475-8196

FURNITURE SALE



WAIT NO MORE!
Our Biggest Summer Sale Is Here.
ALL STOCK FURNITURE
REDUCED 15% to 50%
SAVE 10% ON ALL SPECIAL ORDERS
Fine Quality Furnishings - Great Savings for You.



CARPET SALE

SAVE ON CARPET

10% to 45%

SAVE ON PADDING 15%

Save on Installation
20%

Merkel

HOME FURNISHINGS

Main Street in Chelsea. Open Monday and Friday nights until 9:00 phone 475-8621
Chicago Blvd. in Tecumseh. Open Friday nights until 9:00 phone (517) 423-2205
Professional design consulting



Mr. and Mrs. Thomas R. Gardner

Open House Planned for Former Chelsea Resident, Recent Bride

A reception at Wellesley College Club followed the marriage of Linda Cleverdon, daughter of Mr. and Mrs. Robert N. Cleverdon of Wellesley, Mass., to Thomas Russell Gardner, son of Mr. and Mrs. Russell W. Gardner of Stanwood, and formerly of Chelsea.

Given in marriage by her father at the Wellesley Congregational church on Saturday night, June 12, the bride wore an organza gown with applique lace, and lace mantilla. She carried a bouquet of roses, stephanotis, carnations and baby's breath.

Lisa Cleverdon served as maid of honor for her sister. She wore a long floral print, cotton voile gown, and carried a mixed bouquet of flowers.

Todd Gardner was best man for his brother. Ushers were Rob and Mark Cleverdon, brothers of the bride.

For her daughter's wedding, Mrs. Cleverdon chose a long turquoise chiffon gown. The bridegroom's mother wore a long peach colored gown.

After a honeymoon on Cape Cod, the couple will live in Kalamazoo, where Mr. Gardner will continue his education at Western Michigan University.

Friends and relatives are invited to an "open house" for the newly-wedded couple on Sunday, July 18, at the Gardner home, 11319 Riverside Dr., R. No. 1, Stanwood.

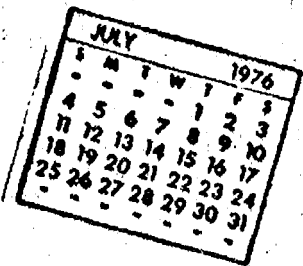
The Michigan State University Agricultural Experiment Station conducts more than 400 projects covering basic and applied sciences annually on the MSU campus and at 14 field stations in Michigan.

Magic Mirror Beauty Salon
Open Tuesday thru Friday
9 a.m. to 9 p.m.
Saturday, 8 a.m. to 3 p.m.
PHONE 665-0816

CARPET REBIRTH
Give your carpet a new lease on life
by cleaning it regularly.
JET SPRAY CARPET CLEANING
Use Your BankAmericard Phone 761-3025 or 475-1509
Ask for John Lixey.

Never needs winding!
BULOVA CARAVELLE
ELECTRONIC WATCHES
Wear the watch you never have to wind. Fully transistorized. With a battery that needs replacement but once a year. Precision and good-looking. Choose yours today.
WINANS JEWELRY

Community Calendar



Chelsea Senior Citizens every Friday at St. Mary school hall on Congdon St. First Friday of the month, cards, 7:30 p.m.; second Friday of the month, cards, 7:30 p.m.; third Friday of the month, pot-luck and cards, 6:30 p.m.; fourth Friday of the month, business meeting and cards, 7:30 p.m.; if there is a fifth Friday, cards, 7:30 p.m.

Lima Center Extension Study group, Wednesday, July 14, 11:30 a.m. at Fisher's Grove, 3101 N. Lima Center Rd. Bring dish to pass and lawn chairs. Also "white elephant" sale. Hostesses, Mrs. Alfred Johnson, Mrs. Harvey Fisher, Mrs. Earl Stone.

Lima Township Board meets regularly the first Monday of every month, 8 p.m. at Lima Township Hall.

Sharon Township Planning Commission regular meeting third Wednesday of each month.

McKune Memorial Library Summer Reading Program for children begins June 28 and continues through July 31.

Flea Market, North Lake United Methodist church, beginning May 8 and every Saturday thereafter, 10 a.m. to 4 p.m. Lunch offered. Dealers wanted. adv461t

Lyndon Township Planning Commission meets the second Thursday of the month at the Town Hall at 8 p.m.

Chelsea Rebekah Lodge No. 130, first and third Tuesday of each month at 7:30 p.m.

Humane Society of Huron Valley has dogs and cats for adoption. Owners may reclaim their lost pets. Phone 662-5585. Open from 9 a.m. to 5 p.m. daily; Sunday, 1 p.m. to 5 p.m. 100 Cherry Hill Rd., quarter-mile south of Plymouth Rd. at Dixboro.

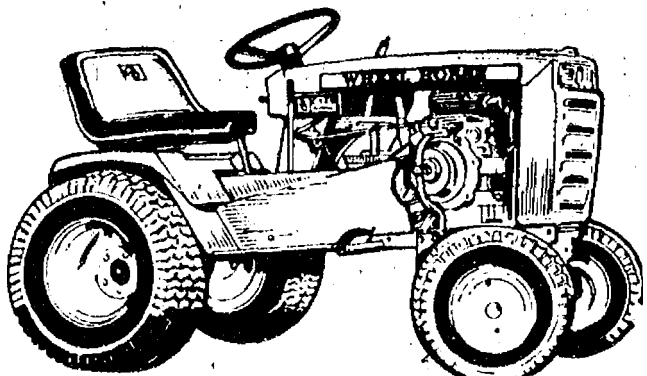
Tours of Chelsea Community Hospital and surgical center are available for small groups. To arrange for tours, call: Neva Jordan, 426-8027, or Dorothy Miller 475-8020.

(Political Advertisement)

WHO IS JIM TAYLOR?

WHEEL HORSE FACTORY REBATE

SAVE \$150.00



On this year's round work horse.

The Wheel Horse C-120 8-speed is a 12 HP lawn and garden tractor especially built for 1-3 acres of hard work. Mows grass. Plows or throws

snow. Pushes dirt. Hauls heavy loads. Tends gardens.

WHEEL HORSE lawn & garden tractors

For 3 weeks only THROUGH JULY 24th

Make your best deal then you get a Wheel Horse factory rebate of \$150.00.

GO

GAMBLES

110 N. MAIN

PHONE 475-7472

DEATHS

Mrs. Elmer Lehman Dies Thursday Morning At Chelsea Methodist Home

Mrs. Ella A. Lehman of the Chelsea United Methodist Retirement Home died Thursday morning, July 1 at the Home. She was 88. Mrs. Lehman was born Jan. 12, 1890, in Lima township to Joseph and Caroline Wacker Mayer. She married Elmer Lehman on Feb. 19, 1915.

The couple lived on a farm at 18981 Lehman Rd. for many years before moving into the actual village limits of Chelsea in 1962. Mrs. Lehman was a resident of the Methodist Home for the past three years.

She was a member of St. Paul United Church of Christ, Needle and Thread Circle, Women's Fellowship, and XYZ Senior Citizens Club.

She is survived by one son, Earl Lehman of Ypsilanti, two daughters, Mrs. William (Margaret) Engers of Horton, and Mrs. Glendon (Helen) Sharpe of Birmingham, five grandchildren, and one great-grandson. Eight brothers and one sister preceded her in death.

Funeral services were held Saturday, July 3, 1:30 p.m. at the Burghardt Funeral Home. The Rev. Ralph Ratliff officiated. Burial followed in Vermont Cemetery.

Memorial contributions may be made to Chelsea United Methodist Retirement Home, or to St. Paul United Church of Christ.

Mrs. Andrew Dresden Dies July 1 in Harrison

Mrs. Stella Dresden of Harrison, formerly of Ann Arbor and Manchester, died suddenly July 1, at the age of 68. She was born Jan. 21, 1908 in Ann Arbor to John and Emma C. (Schwab) Herrst. She was married to Andrew Dresden who preceded her in death Jan. 4, 1964.

Mrs. Dresden is survived by one son, Leonard Van Riper of Harrison; two daughters, Mrs. Robert (Estella) Styers of Saline and Mrs. James (Rosalie) Uphaus of Ann Arbor; three brothers, John H. Herrst of Pinckney, Donald F. Herrst and Bernard R. Herrst of Lima township; 12 grandchildren; 17 great-grandchildren; one great-great-grandchild; and several nieces and nephews.

Funeral services were held Monday, July 5, 2 p.m. at the Coker Funeral Home in Harrison with the Rev. Carl Gillett officiating. Burial followed in Pleasant Plains Cemetery, Harrison.

Mrs. Walter Copp

Central Fibre Retiree Dies at Lansing Hospital

Mrs. Miriam Copp of Pinckney died Monday, July 5 at a Lansing hospital at the age of 76. She was born May 25, 1900 in Star City, Ind., to Martin and Liviola Renbarger. She was married to Walter Copp, now deceased.

Mrs. Copp worked at Central Fibre Products Co. of Chelsea for 25 years before retiring in 1957.

She is survived by two daughters, Miss Clara Copp of Pinckney, and Mrs. Richard (Margaret) Jackson of Lansing; two grandsons, and three great-grandchildren.

Funeral services will be Thursday, July 8, 2 p.m., at Palmer-Bush Funeral Home in Lansing, with the Rev. Jack Short officiating. Interment will follow in Evergreen Cemetery, Lansing.

Henry F. Smith

Chelsea Woman's Father Dies at Local Hospital

Henry F. Smith of 2250 McKinley Rd., died Tuesday, July 6 at Chelsea Community Hospital. He was 92. Mr. Smith was born Dec. 24, 1883 in Aphelesprings, N.Y., to Mr. and Mrs. Charles Smith. He married Margaret Sullivan in 1908. She preceded him in death June 13, 1924.

For most of his life, Mr. Smith had been an interior decorator, making his home for the past 17 years with his daughter, Mrs. Edward (Margaret) Beissel of Chelsea. He was a member of St. Mary Catholic church of Chelsea. He is survived by three daughters.



CHILDREN'S THEATRE: Now in its third consecutive year, Chelsea Players' Children's Theatre Workshop has developed into an effective, creative tool, providing participants with an introduction to acting and to the many facets of play production. At the conclusion of each year's workshop, students present a play, giving them the opportunity to put their acquired knowledge to practical use. Pictured here is the cast of Jeff Daniels' musical production,

"Polite Applause," one of three plays to be performed Saturday, July 10, at 2 p.m. in the Chelsea High school auditorium. Front row (left to right): Tanya Matloff, Pat Powers, Dave Walters, Tim Pennington, and Vaughn Mills; back row (left to right): Sally Vaught, Molly Eisele, Sarah Merkel, Duane Branch, Steve Cattell, and director Jeff Daniels.

Recreation Program Playground Schedule

Chelsea Recreation Department has announced the following playground schedule for the week beginning Monday, July 12.

Monday, July 12—9 a.m.-10:30 a.m.—Arts and crafts.
10:30 a.m.—Capture the flag.
11:30 a.m.—Free play
Tuesday, July 13—9 a.m.-10:30 a.m.—Kickball, North at South. Softball, South at North.
10:30 a.m.—Checkers.

Caravan Going To Waterloo Saturday Evening

Saturday, July 10, Chelsea will once again take to the roads in a bicentennial caravan to Waterloo. The Chelsea fleet will leave the Chelsea High school parking lot at 7 p.m.

Maintaining law and order on this journey filled with peril, will be the ever present Keystone Kops and their villainous counterparts, the Calamity Janes. However, justice will be served by the honorable kangaroo court should any shenanigans get out of hand.

All of Chelsea is encouraged to ride out of town on Saturday, and celebrate voyage's end in Waterloo the same evening.

Mrs. Merle (Emily) Cummings, Mrs. Russell (Myrtle) Green, both of Manchester, and Mrs. Edward Beissel of Chelsea; seven grandchildren; and 13 great-grandchildren. One brother and two sisters are also deceased.

Rosary will be recited with the Rev. Father Philip Dupuis on Friday evening, 7 p.m., at Staffay Funeral Home. Funeral services will be held 11 a.m. Saturday, July 10, at St. Mary Catholic church with the Rev. Fr. Francis Wahowiak officiating. Burial will follow in Mt. Olivet Cemetery.

Memorial contributions may be made to St. Mary's building fund, or to the Cancer Fund.

DUANE ROWE

MASTER PLUMBER

18530 Bush Road
Chelsea, Mich. 48118
Phone 475-2051

ENJOY AN EVENING IN MANCHESTER

22nd Annual CHARCOAL CHICKEN BROIL

THURSDAY, JULY 15

Serving from 4 p.m. to 8 p.m.

Prepared To Serve 10,000 at Manchester Athletic Field (Midway Between Jackson and Ann Arbor, 12 miles south of Chelsea) Butter basted, slow broiled one-half chicken prepared on four 100-foot-long pits. A Bicentennial style show involving some 160 people will present a 90-minute free program on stage. Free parking. Shuttlebus service to serving area. Quick service.

COMPLETE DINNER OR TAKE OUT

\$2.75 Advance Ticket

\$3.00 at the Gate

Save a quarter. Business places and workers have tickets.

Profits always used for youth projects.

A new record was set in 1921 in highway building—12,000 miles of Federal Aid highways were completed. Number of "motorized express companies" grew to 1,500—nearly 1,000 of which were engaged in some form of intercity transport.

More than 17,000 Michigan State University students are assisted annually by federal, state or MSU financial aid.

BIRTHS

Daniel Wayne Allen, June 29, at St. Joseph Mercy Hospital, Ann Arbor; to Mr. and Mrs. Danny D. Allen. Maternal grandparents are Mr. and Mrs. Norman O'Connor of North Lake and paternal grandparents are Mr. and Mrs. Richard Fouty of Chelsea, and Ira Allen of Battle Creek.

WANTED - COPIES OF PHOTOGRAPHS

Have you photographs of any of the following persons and will you provide copies (approximately 2" by 3") from which a photographic appendix may be prepared for the genealogy of THE CONGDONS OF CHELSEA, MICHIGAN? Erastus and Fannie Congdon Whaley, Elisha Congdon, James Congdon, Charles Congdon, their wives or children or grandchildren? A copy of the genealogy may be seen at the McKune Library, Chelsea.

Ralph Muncy, 1015 Martin Pl., Ann Arbor, Tel. 663-3761

EVERGREENS at a BARGAIN!

Home-grown potted pines and Blue Spruce, 1 1/2 to 2 ft. ONLY \$3.95 ea. or 4 for \$12.00, 10 for \$27.50. Some rooting through the pots so they are very much alive.

Or dig your own. 4 ft. Blue spruce at Only \$7.00, 2 for \$11.00, 5 for \$25.00 and that is a bargain! Compare elsewhere. It should be a good time to dig after all this rain. Bring shovels and burlap bags (not plastics). Also: Red Leaf Berry, \$1.50, 8 for \$11.00

HEISE'S TREE FARM

Open July and August on Sat. & Sun. only from 8 to 12.

Other days when I am there. Location: North side of I-94, Exit 162 Fletcher Rd., then turn east on Scitz Dr. About 2 miles east of Chelsea.

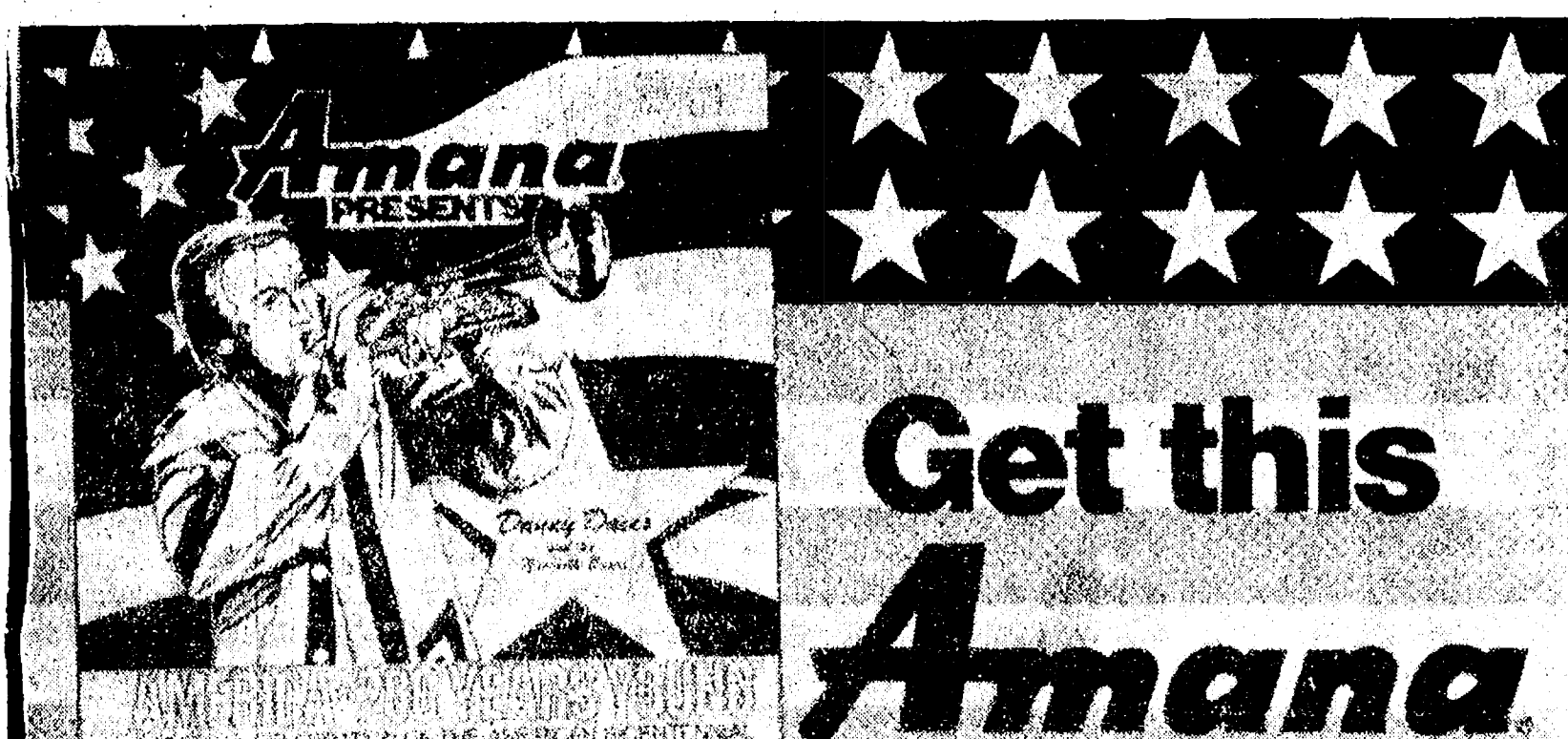
BICYCLE LICENSES

Bicycle licenses are now on sale at the Chelsea Police Station.

Old bicycle licenses expired July 1, 1976, and new licenses must be displayed by that date.

POLICE DEPARTMENT

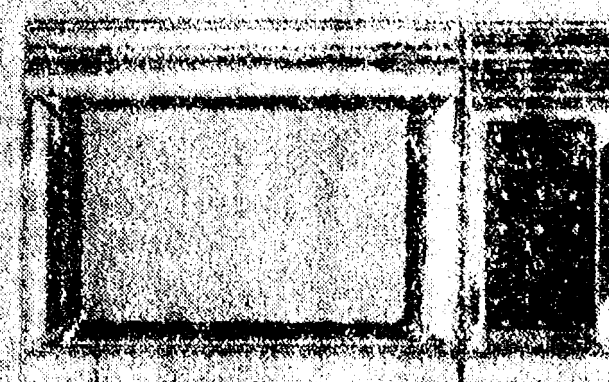
VILLAGE OF CHELSEA



Get this Amana Bicentennial Stereo Album for only \$1.00

A \$6.95 VALUE

Just for making the greatest cooking discovery since fire!



Amana Touchmatic Radarange

the first microwave oven with a memory—makes microwave cooking simple as 1-2-3!

- Deposits and cooks all delicacies and roasts meats in combination—with just one setting at the beginning.
- Gets food from the freezer to the table, piping hot—anytime as 1-2-3!
- Stainless steel interior produces more cooking power per watt than painted interiors. Plus it's easy to clean and stays new looking indefinitely.
- 675 Watts of cooking power! Cooks almost everything in 1/4 the usual time.
- Saves energy! The Amana Touchmatic Radarange uses 30% to 75% less electricity than a conventional electric range!
- Big enough to roast a family size turkey.
- Special removable glass fiber key—defects juices and catches spills easy to clean.

See our demonstration of the Amana Touchmatic Radarange Microwave Oven—and get your Amana Stereo LP Bicentennial Album of Danny Davis and the Nashville Brass. A \$6.95 Value... for only \$1.00!

HEYDLAUFF'S

113 N. Main St., Chelsea

Phone 475-1221



INTERRUPTING REHEARSAL of "The Countess," a drama written by Neil Cockerline in collaboration with Doug Beaumont, the cast in this Children's Theatre Workshop production poses for a photo. Some of the members still seem to be maintaining the character of the part they will play. Front row, left to right, are Janie Musbach, Suzy Riemenschneider, Amy Eisenbeiser, Kurt Eisenbeiser, Paul Woods, and Robbie Riemenschneider; second row, from left, Jimmy Webber, Dave Harbaugh, Maggie Sweet, Chris Tobin, Cathy French, Laurie Volta, Tracy Cattell, and Colleen Stubbs; back row, from left, Directors Neil Cockerline and Doug Beaumont. Missing from the photo is cast member Jennifer Cattell.

Afterglow Party Set for Opening Night

After the opening night performance of "Hello Dolly" on Thursday, July 15, there will be an Afterglow party at the home of Mr. and Mrs. Dale Schumann, 687 Washington St. The public is invited to attend.

A late evening buffet supper, including punch, chicken crepes, tossed salad and dessert, will be served.

One hundred tickets are available. The \$10 per person tickets include a \$5 center section seat to the Thursday evening performance of "Hello Dolly," with the balance of the fee to be divided between a contribution to the cost of the buffet and to the Friends of the Chelsea Players summer theatre program sponsorship fund.

Tickets may be purchased by calling Mrs. Charles Mattoff, 475-7678.

I-94 Restricted To One Lane Near Ypsilanti

Traffic on US-12 will be reduced to a single, two-lane roadway over Interstate 94 Freeway southwest of Ypsilanti for the rest of this year, the Department of State Highways and Transportation announced today.

The restriction, including a ban on passing and left turns, is due to widening of I-94 and construction of a new interchange with US-12. Traffic on US-12 still will have access to I-94.

Continuing good weather may enable work on the interchange to be completed late this year.

Contractor on the 8 million project is Thompson-McCully Co. of Belleville. Bridge contractor is E. C. Kornetel-Co. of Trenton. Bids were taken in May of 1975.

Visitors from Florida

Mr. and Mrs. Robert Rawson of Pompano Beach, Fla., arrived in Chelsea Thursday, June 24 to visit their daughter, Mrs. Joseph Torrice.

The couple, currently visiting at the home of Mr. and Mrs. Torrice, will spend their summer vacationing in the area. They plan to visit friends and relatives in the Dearborn area, and will also stay with their son, Robert Rawson, Jr., of Portage Lake.

Many a May Queen has been swept off her feet by June.

THE CHELSEA STANDARD

Second Section CHELSEA, MICHIGAN, THURSDAY, JULY 8, 1976 Pages 7 - 12



CITIZENSHIP SEMINAR: Jane Schafble, Manchester (from left to right, front row); Kathy Schmitke, Chelsea; Jane Savage, Manchester; Scott Owings, Chelsea; (back row) Su Atkins, Ann Arbor; Jody Dennison, Ann Arbor; and Ann O'Conner, Jane Belanger both of Ann Arbor were among 190 Michigan teen-agers attending the 13th annual Young People's Citizenship Seminar, June 21-25, sponsored jointly by Michigan Farm Bureau of Lansing and its member county organizations. The week-long seminar at Albion College emphasized the free enterprise system, the American political scene and democracy.

SOMETHING NEW IN STOCKBRIDGE! COAKLEY'S OFF THE SQUARE

Italian - American Restaurant
LUNCHEON SPECIAL EACH DAY

Wednesday Night:
SPAGHETTI & MEAT BALLS - \$1.95

Friday Night:
FISH FRY - \$2.95 (includes salad bar)

TRY OUR PIZZA - You'll like it!
(Available any time after 11 a.m.)

COMPLETE TAKE-OUT SERVICE

Open Mon. thru Sat., 6 p.m. to 8 p.m.
110 W. MAIN, STOCKBRIDGE PH. 851-7640

Two Bicycles Stolen from Front Porch

Chelsea Police Chief George Meranuck has issued a warning to bicycle owners in the community to be extra cautious in securing their bicycles against thieves as several bicycles have been reported stolen this year.

Urging cyclists to purchase licenses, Chief Meranuck stated the licenses make identification easier should the stolen bicycles be found abandoned, or be seen on the streets.

Two of the latest reported thefts have included an All Pro 10-speed bicycle, 26" red-orange in color, bearing license number 0120, with a flat front tire, broken gears, and a rope around the seat.

The other is a 26" Hiawatha 10-speed, blue and white boy's bicycle, with white tape on the handle bars.

Both were taken from the front porch of a home on Adams St., the morning of July 5. Anyone with information relating to the disappearance or recovery of either bicycle is asked to contact the Chelsea Police Department.

One might call this the era of the investigation.

Old-Fashioned Harvesting Exhibition Set

An old-fashioned harvesting exhibition is slated for Sunday, July 11 at 1 p.m. behind Village Motor Sales on M-52, Chelsea, just south of Polly's Market.

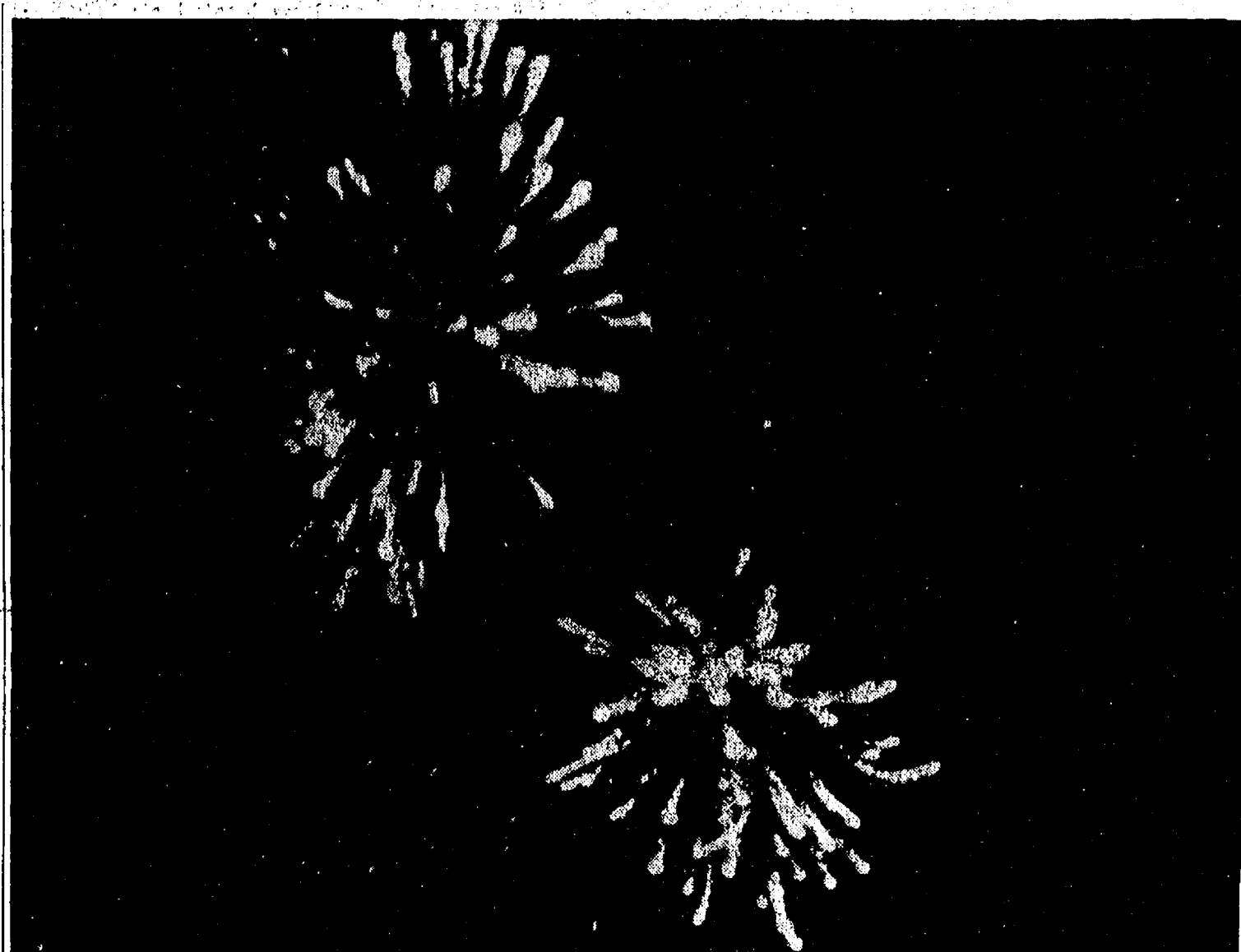
Old-time harvesting techniques will be re-enacted for most of the afternoon.

Teams of mules and horses will pull antique binders, cutting and harvesting the wheat just as it was done nearly 50 years ago.

If you missed the old-fashioned planting bee, this will be another opportunity to see farming as it was done by our forefathers.

Approximately two weeks following the wheat harvest, the oats planted in April will also be harvested, using teams and antique machinery.

Bring the entire family and witness a unique Bicentennial exhibition you may never get a chance to see again.



DAZZLING EVENING FIREWORKS: Skies were a blaze of color and light as fireworks exploded in Chelsea's bicentennial 4th of July celebration at Chelsea Fairgrounds Sunday. Chelsea's American Legion and Kiwanis Club co-sponsored the \$1200 dazzling, visual extravaganza with the help of local businessmen.

Checks Hosted By Polish Group at Trade Exposition

Mr. and Mrs. John Check of 17145 Fahrner Rd., recently returned from the Chicago International Trade Exposition where they were the guests of Michael Bukowski, director of the Polish exhibit, at a cocktail party sponsored by the Polish Embassy.

The Checks visited Poland in March, 1976, where Check, president of Raycon Corp., negotiated contracts with the Polish for special EDM (electronic drilling machinery) machines.

Let's hope that the youngsters will be careful in their swimming this summer and in the conservation of their lives.

Paying debts should be a pleasure to an honest man.

Parks Millage Proposal Gains Endorsement

The Ann Arbor Ecology Center's Board of Directors voted unanimously to endorse the Washtenaw County Parks Millage Proposal, the Parks Commission announced today.

According to Paul Schrodt, director of the Ecology Center, "The Board agreed that the 1/4 mill levy would be a wise investment in Washtenaw county's future."

The levy, which would cost the average homeowner less than \$5 per year, will be presented to county voters on the Aug. 3 Primary Ballot. Millage funds will be used to carry out the County-wide Park and Recreation Plan including a bikeway along the Huron River, a new lake park and preservation of the County Farm.

RICK'S MARKET

20490 M-52 "The Store with the Spartan on the Door" Phone 475-2898

CHEF BOY-AR-DEE
COMPLETE
PEPPERONI PIZZA
1-Lb., 5/8-Oz. Box **\$1.13**

LIBBY'S
SLOPPY JOE
15 1/4-Oz. Can **89c**

COMET CLEANSER
17-Oz. Can **41c**

ECKRICH
SMOKY-LINKS
10-Oz. Pkg. **99c**

BORDEN
ICE CREAM BAR STIX
12 pak **99c**

BANQUET FROZEN
FRIED CHICKEN
2-Lb. Box **\$2.19**

VARIETY MENU
PURINA CAT FOOD
Chicken and Kidney Tuna - Tasty Treat Tuna and Chicken
5 for \$1.00

GENERAL MILLS
FRUIT BRUTE CEREAL
12-Oz. Box **87c**

SPARTAN FROZEN
ORANGE JUICE
1-Lb. Can **51c**

TUESDAY BAKERY SPECIAL:

FRESH HOT 9" PIES \$1.75

APPLE - CHERRY - BLUEBERRY - DUTCH APPLE - STRAWBERRY-RHUBARB

RICK'S HOT BREAD DAILY

Weekdays by 3:30 p.m. Sat. & Sun., by 10:30 a.m.
(QUANTITY RIGHTS RESERVED)

OIL-PROOF PLUS SUPPORT

also available with steel toe

Mechanics, station attendants, machine shop operators—and tired feet and ankles. Full-grain leather, steel shank and "Sweat-Proof" flexible split leather insole provide total comfort. Try on a pair today.

RED WING

FOSTER'S MEN'S WEAR

Ph. 475-1606 Chelsea, Mich.

SUMMER SALE POWER EQUIPMENT

SIMPLICITY 5010 10 h.p. TRACTOR
With 42" mower
Suggested retail price \$1,725 **Now \$1280⁰⁰**

SIMPLICITY 5008 8 h.p. TRACTOR
With 36" mower
Suggested retail price \$1,415 **Now \$1139⁰⁰**

SIMPLICITY 3008 8 h.p. RIDING MOWER
30" cut, electric start.
Suggested retail price \$899.95 **Now \$719⁹⁵**

WALK-BEHIND MOWERS & ROTOTILLERS
Now Reduced . . . 25% Off

CHELSEA HARDWARE

110 S. MAIN ST. PHONE 475-1121

Ads
Taken
Call 1 p.m.
Tuesday

Advertise the Action Way! The Want Ad Way!

Just
Phone
475-1371

WANT ADS

The Chelsea Standard WANT AD RATES

PAID IN ADVANCE—All regular advertisements, 75 cents for 25 words or less, each insertion. Count each line as a word. For more than 25 words add 3 cents per word for each insertion. Special rate of 50¢ per word for 4th, 5th and 6th insertions.

CHARGE RATES—Same as cash in advance, with 25 cents bookkeeping charge if not paid before 1 p.m. (first day preceding publication). For 10 days, send cash or stamps and save 25 cents.

DISPLAY WANT ADS—Rate, \$1.40 per column inch. Single column width only. Space and layout light type only. No borders or boldface type. Minimum 1 inch.

CARDS OF THANKS OR MEMORIALS—Single column width. \$1.50 per insertion for 30 words or less. 50¢ per word beyond 30 words.

COPY DEADLINE—1 p.m. Tuesday week of publication.

ERRORS—Advertisers should check their ads at first publication. This newspaper will not be liable for failure to publish an ad or any typographic errors in publication except to the extent of the cost of the ad for the first week's insertion. Adjustment for errors is limited to the cost of portion of the ad wherein the error occurred.

PIANO TUNING, Chelsea and area. Facilities for reconditioning and rebuilding. Used piano sales; reconditioned grands and verticals. E. Becklund, 426-4429. x501f

KLINK EXCAVATING
Backhoe
Road Work - Basements
Trucking - Crane Work
Top Soil - Demolition
Drainfield - Septic Tank
Trenching, 5" up
Industrial, Residential, Commercial
CALL 475-7631 131f

STEP UP TO KOZMA CONSTRUCTION
And
Step
Down
In
Price

LICENSED BUILDER
FREE ESTIMATES
COMPLETE CONSTRUCTION SERVICES

CALL
LEN KOZMA
475-7452 291f

CARABELA MOTORCYCLES
SALES & SERVICE
MXs and Enduros

Tues. thru Fri., 7 p.m. to 9 p.m.
Saturday 10 a.m. to 4 p.m.

Competition Accessories
137 1/2 Park St., Chelsea 471f

HORSESHOEING—Experienced horseshoer now shoeing in area. Bob Smithers, (517) 851-8479. x451f

WANT ADS

PAINTING and PLASTERING
Call 475-7489

Custom Built Homes

Oh! We Remodel too

U—can count on us

N—a Job Too Small

T—rim Inside & Out

R—ough-in Only If

Y—ou Want to Finish

S—iding Aluminum, 5" Gutters

I—mmediate Attention

D—ALE COOK & CO.

E—stimates, Free

BUILDERS

Please Call

475-8863

DALE COOK

121f

GEORGE W. SWEENEY

HEATING

Licensed Contractor

Furnaces, air conditioning,

and sheet metal work.

Phone 475-1867

204f

CAR RENTAL by the day, week,

end, week or month. Full insur-

ance coverage, low rates. Call

Lyle Christwell at Palmer Motor

Sales, 475-1391. 291f

Fireplace Builder

Field stone mason, block and brick

mason, tuck pointing.

FREE ESTIMATES

Call 475-8925 after 3 p.m.

Patrick Grammatico

1401f

Old Orchard

Furniture Refinishing

ANTIQUES RESTORED

Old finish removed from wood or

metal safely and economically.

513 Old Orchard

Stockbridge, Michigan 49285

(517) 851-7813 21f

J. R. CARRUTHERS

LICENSED

RESIDENTIAL BUILDER

CUSTOM HOMES

ADDITIONS/FIREPLACES

PATIO

ROOFING/SIDING/REPAIRS

475-7234

CHELSEA 301f

LOWREY BERKSHIRE deluxe or-

gan, with home study course.

\$1,800. Ph. 994-6194. x521f

RUBBERMAID Party Plan needs

demonstrators, part-time or full-

time. No collecting! No delivery!

Top commissions! Call Diane, 976-

7086. x71f

WANT ADS

LEONARD REITH

Master Plumber

Licensed Electrician

Hot Water Heat

18238 N. Territorial

Rd.

Chelsea, Mich. 48118

Phone: 475-2044

521f

Pierson &

Riemenschneider

Now located at:

111 Park St., Chelsea

291f

JUST LISTED—3-bedroom hun-

galow on a quiet village street.

Home includes 1 1/2 baths, enclosed

breezeway for both summer and

winter enjoyment, attached 2-car

garage, basement recreation room.

Good location. \$42,900.

291f

JUST LISTED—Attractive 3-bed-

room aluminum ranch style

home on 1 acre, just 1/2 mile out-

side the village of Manchester.

Home includes family room, fire-

place, 1 1/2 baths, basement, recrea-

tion room. 2 1/2-car attached gar-

age. A real bargain at \$45,900.

291f

YOU COULDN'T ASK for more

—this lovely 3-bedroom home

is nestled in a picturesque setting

on a large wooded lot on the 9th

fairway at Inverness Golf Course.

Home is an all-brick ranch, with

fireplace, 2 baths, full basement,

2 1/2-car attached garage. Plus lake

privileges to North Lake. What

more could anyone want?

291f

LOOKING for lake property with

lots of "elbow room"? This 3-

year-old brick and aluminum tri-

level is on Little Portage Lake and

boasts a lot which measures 165'

(lake frontage) x 125'. Home has

4 bedrooms, 2 baths, full basement,

2 1/2-car garage plus many more

extras. Priced in the \$50's.

291f

NORTH LAKE—A private road

takes you to this charming and

secluded home on a canal. North

Lake, 3 extra large bedrooms,

large deck with a lovely view,

brick fireplace, 2 baths, walk-out

basement and garage. All this on 3/4

acre reasonably priced at \$52,900.

291f

LANEWOOD SUBDIVISION—3-

bedroom tri-level home. Area of

fine homes and convenient loca-

tion. Home includes dining room,

family room, 1 1/2 baths, carpet,

drapes and garage. Large 70'x170'

lot. Priced at \$48,500.

291f

HALF MOON LAKE—This cozy

home includes 2 bedrooms, love-

ly fieldstone fireplace for those

chilly nights, mature trees to shade

you, double lot for the kids to play

and screened porch for those lazy

afternoons. Priced to sell at

\$33,500.

291f

Pierson &

Riemenschneider

REALTORS

Office: 475-9101

Eves, call:

John Pierson 475-2064

Bob Riemenschneider 475-1463

Pat Merkel 475-1824

Jeanene Riemenschneider 475-1469

x21f

MARVIN SCHILLER for Lima

township treasurer. Vote Aug. 3

primary. x7f

WANT ADS

VACUUM CLEANERS

Authorized Electrolux

sales and service.

James Cox

428-8444, or 428-8684

118 Riverside Dr., Manchester

FOR RENT—American Legion

Hall. \$50. Call 475-1824. 291f

Complete

Body Repair

Service

Bumping - Painting

Windshield and Side Glass

Replacement

Free Pick-up & Delivery

Open - Monday Until 9

CONTACT DON KNOFF

FOR FREE ESTIMATE

291f

Village

Motor Sales, Inc.

CHRYSLER - DODGE

PLYMOUTH - DODGE TRUCKS

Phone 475-8661

1185 Manchester Rd., Chelsea

Hours: 8 a.m. to 5:30 p.m.

Tues. thru Fri. Until 9 Monday.

9 a.m. to 1 p.m. Saturday. x141f

Headquarters for

RED WING

WORK SHOES

Foster's Men's Wear 401f

CHELSEA

\$39,900—10 miles north of Chel-

sea, 10 acres and 4-bedroom

home, barn, fenced for horses,

Stockbridge school.

CHELSEA SCHOOLS—4 bedrooms,

dining el, family room, utility

room, fireplace, 1 1/2 baths, 24'x40'

barn, approx. 1 acre young orch-

ard, 10 acres.

SUGAR LOAF LAKE—3-bedroom

year round, dining el, small

shed, glassed porch, Chelsea

schoools.

CHELSEA SCHOOLS—5 bed-

rooms, family room, dining

room, 50 acres, good productive

soil, 2 barns, centrally located be-

tween Chelsea and Dexter.

222,900—2 bedrooms, dining area,

electric fireplace, new roof, 50

yards to safe sandy beach, wooded

area, Pinckney schools.

22 1/2 ACRES—5 bedrooms, dining

area, 2 barns, 2 silos, 3-car gar-

age. Terms possible. Dexter

schoools.

1 ACRE, Village of Chelsea, 4 bed-

rooms, dining room, family

room, fireplace, 1 1/2 baths, heated

sun porch, \$45,500.

REDUCED TO \$43,900—5 bed-

rooms, TV or sewing room, din-

ing room, 2 baths, 1-car garage,

Chelsea schools, blacktop road, 3

miles south of Chelsea.

\$57,900—1,876 sq. ft., lots of liv-

ing in this 3-bedroom home, fam-

ily room, baths, Bunny canal,

Portage Lake.

REDUCED TO \$41,900—3 bed-

rooms, dining el, family room,

fireplace, basement, 2-car garage.

WOLF LAKE—3-bedroom year

round water front, dining area,

living room with fireplace, kitchen

with laundry, 14'x20' patio with

brick Bar-B-Q grill.

291f

FRISINGER

REALTORS

Chelsea 475-8681

Eves:

WANT ADS

- YOUNG -

List and sell lake, country and town properties. Eugene Young, Real Estate & Builder, 878-3792, 506 Dexter-Pinckney Rd., Pinckney 48169. x341f

AR & TRUCK LEASING. For details see Lyle Christwell at Liner Motor Sales, 475-1301. 491f

COMPLETE ALUMINUM SERVICE

Siding - Awnings - Repairs
Gutters - Storm Windows
Remodeling
Free Estimates
Call 475-9209

Amelot Construction
Chelsea, Mich. x121f

DOMS by day, week or month. Excellent for the single man or three. Sylvan Hotel, Chelsea. Ph. 5-2911. x311f

KETO USED CARS
8020 GRAND - DEXTER
426-4535
CARS BOUGHT AND SOLD x381f

A fine selection of
New and Used Cars
for immediate delivery

Harper Pontiac
Sales & Service
475-1304
Evenings, 475-1608 401f

ARPENTER WORK - Inside or out. Mr. Coburn, 475-2893. 121f

GAR - NETT'S
Flower & Gift Shop
Your Friendly Florist
112 E. Middle St., Chelsea
PHONE 475-1400

Funeral Flowers
Wedding Flowers
Potted Flowers (arranged or boxed)
Potted Flowering Plants
Green Plants - Corsages
WE DELIVER x91f

R. L. BAUER
Builders
LICENSED and INSURED
Custom Building
Houses - Garages
Pole Barns
Roofing - Siding
Concrete Work
FREE ESTIMATES
Call 475-1218 31f

DD JOBS WANTED - Reliable
21-year-old. Call Steve at 475-20. 4
OWNER - 2-yr. old ranch, 3 large bedrooms, large attached garage, young orchard, beautiful pond and pond site, 5.8 acres. 475-9223. x4

Attention Farm Owners

BICENTENNIAL SPECIAL for equipment storage, utility sheds, barns or warehouses. Middle pole building to suit your needs. Any size.

FREE ESTIMATES

SLOCUM CONTRACTORS & BUILDERS
Ph. 475-8321 or 475-7611

WANT ADS

WEDDING STATIONERY - Prospective brides are invited to see our complete line of invitations and wedding accessories. The Chelsea Standard, 300 N. Main. Ph. 475-1371. 81f

McCulloch
Portable Generators
Chain Saws
WE SELL, SERVICE,
SHARPEN AND TRADE.
Chelsea Hardware 211f

FOR REAL DOLLAR SAVINGS be sure and see us before you buy any new or used car. Palmer Motor Sales, Inc. Your Ford Dealer for over 60 years. 21f

A NEW HOME for the young executive who enjoys entertaining. Your friends will envy you in this lovely 3-bedroom, 1 1/2-bath ranch home. It features fireplace, baroque deck, open living, 2-car attached garage, spacious basement for the ping pong and pool playing enthusiast, and many other exciting architectural features. Carefully selected to capture the beauty of the site, 8 miles north of I-94, Chelsea schools. \$45,900. Call WEBER HOMES, 475-2828. "We're Builders." x21f

FOR SALE - Compact circulating gas heater. Good for garage or cottage. Call 475-8407. x21f

STRAWBERRIES
Pick your own.

Bring your own containers. Call for picking days.
Order 30-lb. tins of chilled strawberries. Ready to use or freeze.
\$16.50 whole with sugar.
\$16.50 sliced with sugar
\$17.50 whole, no sugar
Order now for pick-up on June 29.
1-94 west to Zeeb Rd. Exit, N. on Zeeb Rd. for 3 miles. Gold Barn on left. Gold Barn open for frozen fruit, jam, and frozen cider.

HURON FARMS
426-3919 x11f

DON'T THROW IT AWAY - Sell it to A&K Mower Service of Chelsea. We buy, sell and repair all types of lawn mowers. We also repair all types of small gas motors; rototillers, chain saws, riding lawn mowers. You call, we haul. Free pick up and delivery. 475-2823. x40f

WANTED - Standing hay. Ph. 475-2771. x31f

Howell Town & Country, Inc.

LOVELY to come home to. This lakefront, older home at Highland Lake. 3 bedrooms, spacious living room with fireplace, a nice dining area, ample closets and storage. Many extras your family will enjoy. A nice beach. Ask about ALH-5215-R1.

LEISURELY LAKE LIVING for a bargain price. Home on channel at Portage Lake. Panned living room with fireplace. Priced at \$29,900. ALH-5223.

Howell Town & Country, Inc.
Phone 873-3177.
Carlie Wiedman,
Local Representative
Evenings, 426-3758. x4

EVANS JANITORIAL SERVICE has part-time positions available for the Chelsea area. Call 971-6293 after 6 p.m. 31f

VOTE - Primary Election, Aug. 3. Betty Koch, Lima Township Treasurer. x7

HELP WANTED - Mature woman to work at snack bar. Stuckey's Pecan Shop, 475-7334. x4

WANT ADS

CERAMIC TILE - Reasonable prices. Excellent work. Ph. 426-2280. x241f

BRICK MASON - Brick work block work, fireplaces, chimney repairs, homes and additions. Ph. 475-2584. x441f

PAINTING - Exterior and interior. Quality workmanship, free estimates, references, reasonable rates. Ph. (517) 851-7055. x481f

SEE US for transit mixed concrete. Klumpp Bros. Gravel Co. Phone Chelsea 475-2530, 4920 Loveland Rd., Grass Lake, Mich. x491f

TRAVEL TRAILERS - 13-ft. and up; 10x55 ft. trailers. John R. Jones Trailer Sales, Gregory, Mich. Phone 498-2655. 431f

FANTASTIC BUYS

'75 LTD 2-DR. Factory air \$3985
'75 LTD 4-DR. Loaded \$4495
'75 PINTO 3-DR. \$2995

'74 KAWASKI MOTORCYCLE, like new.

'74 GRAN TORINO. Factory air \$2985

'74 PINTO WAGON. Very clean \$2395

'73 CHEV. IMPALA 4 Dr. \$2595

'73 MAVERICK 4-Dr. One owner \$1995

'72 PINTO Wagon. Real clean \$1685

'72 LTD 2-Dr. Factory air \$1795

'72 PINTO 3-DR. Good economy \$1395

'71 COMET 2-Dr. Automatic \$1495

'71 GALAXIE 500 2-Dr. hardtop \$1495

'71 DODGE Wagon Automatic, air \$1695

'70 VW KARMAN GHIA One owner \$1285

'70 DODGE 2-Dr. \$695

'70 FAIRLANE 500 2-Dr. Real nice \$1295

'68 FIREBIRD Conv. \$1295

'62 CORVAIR Monza

TRUCKS

'75 FORD, 1/2 Ton \$2895
'72 FORD, 3/4 Ton \$2195

PALMER FORD

475-1301 or 475-1800
Since April 1912
Chelsea, Mich. x31f

NOW TAKING ORDERS for fresh fruit. Direct from Western Michigan. Cleaned and ready to eat. Cherries, raspberries, blueberries, blackberries, boysenberries, peaches, apricots, apples, rhubarb, currants, melon balls and fruit cocktail. Also pineapple and asparagus. Orders must be in by July 16th. Phone 428-7600. Manchester Locker Plant, Manchester, Mich. x5

CUSTOM SEWING and alterations. Ph. after 2:30 p.m., 475-8745. 301f

ROOFING SPECIALIST - All types of roof repairs, homes, barns, commercial. Insurance repairs. Asphalt shingles, hot built-up roofing, cedar-slate tile-asbestos. Awnings and porch enclosures. Call Joe Hayes for free estimates. Manchester, 428-8520. x221f

BUILDING LOT - 5 acres. \$14,000. Terms. Ph. 475-1743. 451f

G.E. PORTABLE DISHWASHER - 2 years old, excellent condition. \$100. May be seen at 14550 Jerusalem Rd. Reuben Lesser, Jr., 475-8564. 4

WANTED - Hauling jobs, junk, wood, almost anything. Call 475-8994. 301f

FOR SALE - Joslin Lake, 2-acre building site, with lake privileges. Call 475-9209. x301f

NEED A ROOF? Call Toth Building & Remodeling, (313) 499-2178. 411f

HI NEIGHBOR - Tried Blue Lustre for cleaning carpets? It's super! Rent electric shampooer. \$1. Chelsea Hardware. x4

WANTED TO RENT - House in Chelsea area for responsible engineer and family. Ph. 971-4384. 5

FOR SALE - '71 Chevy 4-door, p.s., p.b., a.c., low mileage, very good condition. Ph. 475-2876 after 5 p.m. 41f

NEEDED, dependable babysitter, my home or yours, 3 boys ages 4, 5, and 6. Evenings, 7:30 p.m. to 12:30 a.m., Thursday through Tuesday. Prefer older woman. Wages negotiable. Call 475-9319 before 7 p.m. x4

country beautiful

-Quality Materials
-Professional Workmanship
-Country-Style Beauty

"Your Lot or Ours"

We Do Everything for You From Financing To Clean-Up At Price You Expected To Pay... Appointment Anytime

Weber Homes
Over 20 Years Experience
Call 475-2828
12290 Jackson Rd., Chelsea

WANT ADS

SEAMLESS ALUMINUM eaves-troughs, roofing, siding, and carpentry work of all kinds. Experienced installers. All work guaranteed. For free estimate, call R. D. Kleinschmidt Co., 428-8836. x311f

REAL ESTATE

SMALL HOME on quiet village lot, has one bedroom, kitchen, dining room, living room, two enclosed porches, oil forced air furnace. Full price \$12,500.

BRAND NEW 3-BEDROOM home on 4 acres south of Gregory. Has family room with deck adjoining pretty kitchen, 1 1/2 baths, 2-car garage, plus walk-out basement. \$48,000.

LARGE 5-BEDROOM BRICK home with lots of charm, lots of shrubs and trees, plus garage, situated on 7 acres, Grass Lake schools. \$48,500.

LAKEFRONT LOT with two acres of nice sloping land. Jackson county. \$12,500. Terms possible.

10 ACRES with scenic view and active creek. Chelsea schools. \$15,500.

15 ACRES WOODED - Wide frontage on blacktop road. Waterloo township. \$24,500. Terms possible.

40 ACRES, all tillable, with creek bordering property. Pine trees create nice site for dwelling. \$34,500. Terms possible.

WATERLOO REALTY
355 Clear Lake
JOANN WARYWODA, BROKER
Phone 475-8674

Evenings:
Jerry Gondek 475-8285
Paul Erickson 475-1748
Carol Lakatos 475-7129
Sue Lowe 475-2377 x41f

BIG LAWN SALE - July 9-10, 10 to 5 p.m. 2 families. Moved lots of stuff. 13700 E. Michigan, Grass Lake. 4

ATTENTION NEW PARENTS and expecting parents. Before you buy new furniture and clothing at an expensive price come and see what we have. Children outgrow clothing and furniture before they wear them out. Other items available also. For more information phone 475-2639. 4

LOST - Blond Lhasa Apso dogs, mother and pup. Jefferson St. area. Reward. Ph. 475-8565. 4

SONY STR 7055 STEREO receiver, 35 watts, RMS per channel. \$450 new, 1 yr. old, asking \$250. Ph. Ypsi. 434-0939. x501f

HOUSE IN CHELSEA for sale by owner. Spacious 2-bedroom, 1-car garage, fenced back yard. \$28,500. Phone 475-2057. 4

Howell Town & Country, Inc.
313-878-3177

HOW WOULD YOU LIKE to own a secluded 3-bedroom home with 2-car attached garage and lake privileges. You can for only \$26,900. LHP-5336.

NEARLY NEW, custom built 2-bedroom home with lake privileges to Patterson Lake. Has lovely view of lake with woods behind. Many extras. \$29,900. LHP-5073.

NO SPRING CLEANING here. Spic and span new home just outside Pinckney on a spacious 10 acres. Large living room, lovely family room with fireplace, 3, possibly 4 bedrooms, rec. room with fireplace, attached 2-car garage. Country ranch priced at \$62,000. Terms. SF-5129.

Call

Howell Town & Country, Inc.
117 Main St., Pinckney
1-878-3177 x4

10 ACRES - Gaylord-Mancelona area. Heavily wooded, hardwoods, excellent deer area, close to thousands of acres of State Forest, secluded, camping, hunting, fishing \$4,995 with \$500 down. \$50 monthly, 8% land contract. Call 616-258-4873 days, 616-258-5747 evenings. Write Wildwood Land Company, R. No. 1, M-72, Kalkaska, Mich. 49646. 5

OPEN SUNDAY

2 to 5 p.m.
20931 Island Lake Rd., Chelsea

FANTASTIC! Is the only way to describe this setting for this custom-built home. 15 acres of beautiful rolling land with a stand of stately pines. \$89,000. N. on M-52 to Werker Rd., right on Island Lake Rd.

Host: Harold Peterson

Caldwell & Reinhart Co.
REALTORS
971-6070, or evenings 434-0548

CLEAN, soft, fluffy dry carpets. That's what you get when you clean them with HOST. Rent the HOST Machine. Merkel Home Furnishings, Chelsea, 475-8624.

YARD SALE - 311 Congdon, Chelsea. Thurs.-Sat., July 8-10, 9 a.m. to 4 p.m. x4

TOY DEMONSTRATORS - Invest your time, not your money. Earn sample kit free, plus 25% commission. No delivering. No collecting. American Home Toy Parties. Call 475-1543. x7

FREE CAT to a good home. Offered and declined. Call 475-1095. x5

FOR SALE - 2 young beef cows, one open, one due to calf in 2 weeks. Ph. 475-7286. x4

FOR SALE - Aircraft 12-ft. fishing boat. Aluminum row, color blue. \$150. 475-7550. x4

AKC champion sired German Shepherd puppies. Show quality or pets. Mrs. Carr, 663-2367. x6

WANT ADS

BEER - Locally corn fed. By quart or side. Ready for your freezer. Ph. 426-4022 after 6 p.m. x421f

CUSTOM BUILDING

LICENSED & INSURED
FREE ESTIMATES
TOTAL CONSTRUCTION SERVICES

-Homes, factories, warehouses
-Pole buildings
-Garages
-Remodeling - Additions
-Aluminum Siding
-Roofing
-Masonry Work, fireplaces, block work, patios, etc.

SLOCUM CONTRACTORS & BUILDERS

Serving Washtenaw County
For Over 20 Years
20700 OLD US-12
CHELSEA
Phone 475-8321 or 475-7611 21f

CHELSEA - 3-bedroom ranch, family room, fireplace, full basement, carport, excellent area, 1 1/2 baths. \$41,900. Ph. 475-1254. x31f
MARVIN SCHILLER for Lima township treasurer. Vote Aug. 3 primary. x7

OPEN SUNDAY

2 to 5 p.m.
10010 Stinchfield Woods Rd.
Pinckney

SPACIOUS 5-bedroom hillside ranch. Beautiful lake living on Portage Lake on chain of lakes. 2 1/2 baths, family room, 2 fireplaces, large deck and patio area. Two 2 1/2-car garages. Dexter-Pinckney Rd. to Stinchfield Woods Rd. 475-2639.

Hostess: Fran Jones

Caldwell & Reinhart Co.
REALTORS
971-6070, or evenings 994-5731 x4

GARAGE SALE - July 10, 11, 1281 Guinan Rd., Sugar Loaf Lake. 4 12-14 tire, camera, clothes and misc. items. x4

LOST DOG - German Shepherd and elkhound. Brown and black with curly tail. Gone 2 weeks. \$50 reward. 426-4988. x4

3-FAMILY GARAGE SALE - 18000 M-52 North, Chelsea, July 8-9. x4
GARAGE SALE - 11582 Pleasant Lake Rd., Manchester (next to Pleasant Lake school), July 8-9-10, 9 to 5. x4

FOR SALE - 10 Holstein heifers due to freshen from July 15 to Oct. Welton Bohne, phone 475-1937, 8867 Waterloo-Munith Rd. x4

1974 LINCOLN Town Coupe, low mileage, good condition. \$4,500. Call 475-8786. x5
FOR RENT - Unfurnished apt. Stove, refrigerator, heat furnished. No pets, for married couple only. Call 475-8469. x41f

STEREOPHONIC high fidelity condition for sale. Excellent condition. Ph. 475-7012 or 682-4596. x4

FOR SALE - German pointers. AKC. Call 682-5744 or 769-4987. x5

VOTE - Primary Election, Aug. 3. Betty Koch, Lima Township Treasurer. x7

TRAILER SPACE available in the Chelsea Mobile Home Park. Close to shopping, has sewer and city water. Ph. 1-474-8552. x7

VACANT LOT, 160'x60', Selo township, Evergreen subdivision. Ph. 994-6194. x521f

FOR SALE - 15 1/2 ft. Fiberglass ski-boat. 50 h.p., V-4, Evinrude motor, canvas cover, and boat trailer. Call 475-8469. x31f

FOR RENT - Two-bedroom, first floor apartment. Married couple only. No children or pets. Utilities included. 163 Orchard St. Available July 21. 4

RESPONSIBLE MEN seek country home. Willing to make repairs, have maintenance experience. Contact John, 429-1006. x4

VOTE - Primary Election, Aug. 3. Betty Koch, Lima Township Treasurer. x7

FOR RENT - Rooms, in Dexter village. Call 426-8896 or come to 3435 Edison, Dexter. x4

FOR SALE - Suzuki, TF-250, 650 mi., excellent condition. \$650. Call 475-1436. x4

FOR SALE - Beautiful sofa and one matching chair. Good condition \$250. Call 475-7601. x6

INVITATIONS, announcements, informal and accessories. Come in and let us assist you in your wedding plans. Chelsea Card & Gift, 116 S. Main. 4

**MAUSOLEUMS * MONUMENTS
BRONZE TABLETS * MARKERS**

BECKER MEMORIALS
6033 Jackson Road
ANN ARBOR, MICHIGAN

WANT ADS

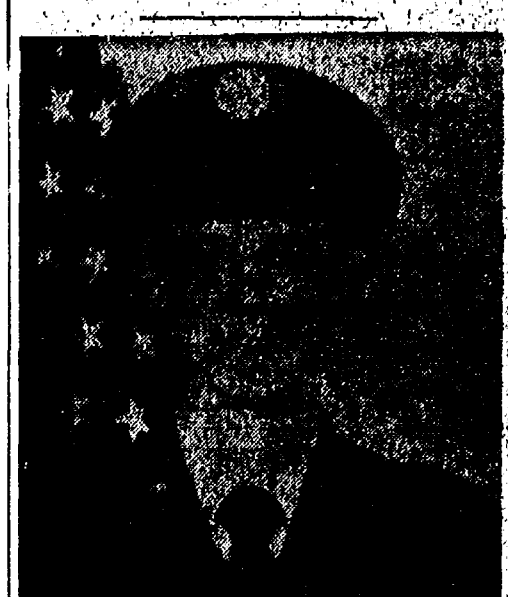
FOR SALE - 1967 Dodge Coronet. Good condition. \$450. Call 475-8360 after 4 p.m. x4

Cards of Thanks

CARD OF THANKS
A sincere thanks to all my neighbors, friends and relatives for their visits, flowers, cards, and messages during my stay at St. Joseph Mercy Hospital, and the loving care and thoughtfulness of my dear family.
Mrs. Floyd Gentner.

CARD OF THANKS
I am grateful for my kind neighbors and friends. Many of you were very kind and helpful to my husband and I while I was in the Chelsea Hospital. I want to give a special thanks to Betty Dorner, Reit Vandervoort, Patricia Markle and family, Jamie McKeighan and Dr. Boisford. And a very special thanks to Bob Thodeson and Dr. Brady.
Cheryl A. Spector.

THANK YOU
I would like to thank my friends for their calls, cards, flowers and gifts sent me while I was in the hospital and since returning home. A special thank you to the Rev. Ratzlaff and the Rev. Schwarm for their visits and prayers. These acts will always be remembered.
Charles Lane.



CHARLES FOYTIK

Airman Charles Foytik
Completes Air Force
Basic Training in Texas

Airman Charles F. Foytik, whose parents are Mr. and Mrs. Dan Foytik of 13425 Old US-12, has been assigned to Lowry AFB, Colo., after completing Air Force basic training in San Antonio, Tex. During the six weeks training at Lackland AFB, Tex., the airman studied the Air Force mission, organization and customs and received special instruction in human relations.

Airman Foytik will now receive specialized training in the supply field.

The airman, a 1974 graduate of Chelsea High school, attended Western Michigan University at Kalamazoo. His wife, Kimberlee, is the daughter of Mrs. Carol Fisher and Dale Fisher, 3991 Notten Rd., Grass Lake.

Michigan State University has been designated an official Bicentennial university by the American Revolution Bicentennial Administration because of its special projects for each of the Bicentennial themes - "heritage," "festivals" and "horizons."

Ann Arbor Symphony Plans Second Concert

The second free concert of the third season of the Ann Arbor Summer Symphony will be at the Briarwood shopping center, South State Rd. at Eisenhower Parkway, Ann Arbor, at 8:30 p.m. on Monday evening, July 12, under the leadership of its music director, Gabriel Villaurda.

The program for Briarwood has been drawn from familiar and melodic orchestral works, and includes Copeland's rousing "Fanfare for the Common Man" and the "Hedonism" from his suite from the ballet "Rodeo." Bach's choral prelude "Sleepers Awake," the brilliant and colorful "Capriccio Espagnol" of Rimsky-Korsakov, three favorites by Leroy Anderson, "The Waltzing Cat," "Blue Tango," "Jazz Plz," and "Bells of the Ball."

There is no admission charge to the concert which will be in the central court of Briarwood. The orchestra's final concert of the season will be on Thursday, July 22, at 8:30 in Hill Auditorium during the Ann Arbor Street Art Fair.

American Association of State Highway Officials adopts recommendations on vehicle size and weight limits in 1932. Interstate Commerce Commission asked Congress for "partial" truck regulation.

Michigan ranked fifth or higher among the 50 states

Legal Notices

MORTGAGE SALE
Default having been made in the terms and conditions of a certain mortgage made by THOMAS P. STIMPY and VICKI L. STIMPY, his wife, of Ypsilanti, Washtenaw County, Michigan, Attorneys for Mortgagee, to WAYNE FEDERAL SAVINGS AND LOAN ASSOCIATION, NOW STANFORD FEDERAL SAVINGS AND LOAN ASSOCIATION, A Federal Association, of Troy, Oakland County, Michigan, Mortgagee, dated the 29th day of January, A. D. 1974, and recorded in the office of the Register of Deeds for the County of Washtenaw and State of Michigan, on the 5th day of February, A. D. 1974, in Liber 1483 of Washtenaw County Records, on page 41, on which mortgage there is claimed to be due, at the date of this notice, the principal and interest, the sum of Forty-Six Thousand Nine Hundred Fifty-Two and 8/100 Dollars (\$46,952.81). No suit or proceedings at law or in equity having been instituted to recover the debt secured by said mortgage or any part thereof. Now, therefore, by virtue of the power of sale contained in said mortgage, and pursuant to the statute of the State of Michigan in such case made and provided, notice is hereby given that on Thursday, the 5th day of August, A. D. 1976, at 10:00 o'clock a.m., Local Time, said mortgage will be foreclosed by a sale at public auction, to the highest bidder, at the west entrance of the Washtenaw County Building in the City of Ann Arbor, Washtenaw County, Michigan, of the premises described in said mortgage, or so much thereof as may be necessary to pay the amount due, as aforesaid, on said mortgage, with the interest thereon at nine per cent (9%) per annum, and all legal costs, charges and expenses, including the attorney fees and costs, which may be paid by the undersigned, necessary to protect its interest in the premises, which said premises are described as follows: All that certain piece or parcel of land situated in the Township of Pittsfield, in the County of Washtenaw, and State of Michigan and described as follows, to-wit:

Part of the N.W. 1/4 of Section 20, T38S, R6E, Pittsfield Township, Washtenaw County, Michigan, described as: Beginning at a point on the W. line of said Section 20, distant N. 170.82 feet from W. 1/2 corner of said Section 20; thence S. 23.00 feet; thence N. 89 deg. 14' 45" E. 213.00 feet; thence S. 89 deg. 14' 45" E. 213.00 feet to the PLACE OF BEGINNING. Containing 4.00 acres more or less, and being subject to the rights of the public over the W. 33.00 feet thereof as occupied by said Road, also any other easements of record.
Dated at Troy, Michigan, May 21, 1976.
Standard Federal Savings and Loan Association, A Federal Association, Mortgagee.
During the six (6) months immediately

following the sale the property may be redeemed.
Dykema, Gossett, Spencer, Goodnow & Trigg, Attorneys for Mortgagee, 200 West Big Beaver Road, Troy, Michigan 48064. July 8-10-12-14-1976

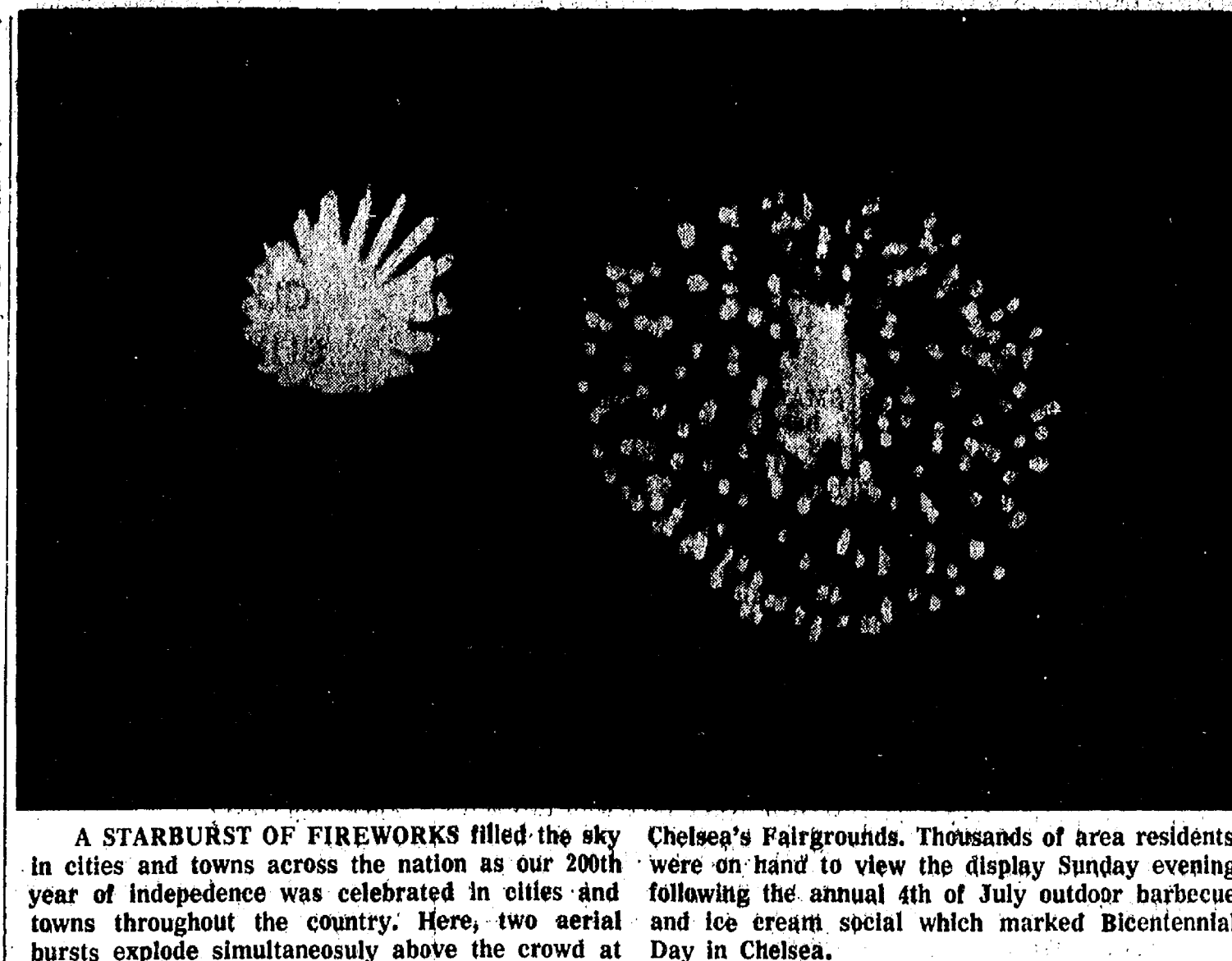
MORTGAGE SALE
Default having been made in the terms and conditions of a certain mortgage made by PHILIP R. DINGLEDY and KATHLEEN L. DINGLEDY, his wife, of Ypsilanti, Washtenaw County, Michigan, Mortgagee, to WAYNE FEDERAL SAVINGS AND LOAN ASSOCIATION, NOW STANFORD FEDERAL SAVINGS AND LOAN ASSOCIATION, A Federal Association, of Troy, Oakland County, Michigan, Mortgagee, dated the 30th day of September, A. D. 1974, and recorded in the office of the Register of Deeds for the County of Washtenaw and State of Michigan, on the 8th day of October, A. D. 1974, in Liber 1483 of Washtenaw County Records, on page 517, on which mortgage there is claimed to be due, at the date of this notice, for principal and interest, the sum of Forty-One Thousand Nine Hundred Seventy-Six and 38/100 Dollars (\$41,976.38). No suit or proceedings at law or in equity having been instituted to recover the debt secured by said mortgage or any part thereof. Now, therefore, by virtue of the power of sale contained in said mortgage, and pursuant to the statute of the State of Michigan in such case made and provided, notice is hereby given that on Thursday, the 19th day of August, A. D. 1976, at 10:00 o'clock a.m., Local Time, said mortgage will be foreclosed by a sale at public auction, to the highest bidder, at the west entrance of the Washtenaw County Building in the City of Ann Arbor, Washtenaw County, Michigan, of the premises described in said mortgage, or so much thereof as may be necessary to pay the amount due, as aforesaid, on said mortgage, with the interest thereon at nine per cent (9%) per annum, and all legal costs, charges and expenses, including the attorney fees and costs, which may be paid by the undersigned, necessary to protect its interest in the premises, which said premises are described as follows: All that certain piece or parcel of land situated in the Township of Superior, in the County of Washtenaw, and State of Michigan and described as follows, to-wit:

Commencing at the S. 1/4 corner of Section 20, T38S, R6E, Superior Township, Washtenaw County, Michigan; thence E. 72.77 feet along the S. line of said Section 20 to the E. 1/2 corner of said Section 20; thence N. 00 deg. 40' 40" E. 84.07 feet to the POINT OF BEGINNING. Containing 4.00 acres more or less, and being subject to the rights of the public over the W. 33.00 feet thereof as occupied by said Road, also any other easements of record.
Dated at Troy, Michigan, June 14, 1976.
STANFORD FEDERAL SAVINGS AND LOAN ASSOCIATION, A Federal Association, Mortgagee.
Dykema, Gossett, Spencer, Goodnow & Trigg, Attorneys for Mortgagee, 200 West Big Beaver Road, Troy, Michigan 48064. July 8-15-22-29

MORTGAGE SALE
Default has been made in the conditions of a mortgage made by ANTHONY L. HEAD & PAMELA R. HEAD, his wife, of Ypsilanti, Washtenaw County, Michigan, Mortgagee, to JAMES T. BARNES, JR., GAGE CO., a Michigan Corporation, Mortgagee, dated May 2, 1973, and recorded on May 11, 1973, in Liber 1483 of Washtenaw County Records, on page 420, Washtenaw County Records, in GOVERNMENT NATIONAL MORTGAGE ASSOCIATION, a National Mortgage Association, by an assignment dated July 1, 1973, and recorded on July 1, 1973, in Liber 1483 of Washtenaw County Records, Michigan, and assigned to JAMES T. BARNES, JR., GAGE CORPORATION, a Michigan Corporation, by an assignment dated December 14, 1973, and recorded on December 14, 1973, in Liber 1486 of Washtenaw County Records, on which mortgage there is claimed to be due at the date hereof, the sum of Nineteen Thousand Five Hundred One and 43/100 Dollars (\$19,501.43), including interest at 7% per annum. Under the power of sale contained in said mortgage and the statute in such case made and provided, notice is hereby given that said mortgage will be foreclosed by a sale of the mortgaged premises, or some part of them, at public auction, at the County of Huron Street entrance of the County Building in Ann Arbor, Michigan, at 10:00 o'clock a.m., Local Time, on Thursday, July 22, 1976.
Said premises are situated in the Township of Ypsilanti, Washtenaw County, Michigan, and are described as: Plg. 5 Unit A 17 Wingate Park Condo. According to the Master Deed recorded in Liber 1483 of Washtenaw County Records and designated as Washtenaw Condominium Sub Plan No. 12, together with rights in common general elements and limited common elements as set forth in master deed and as described in the 2nd of Public Act of 1963 as amended.
During the six months immediately following the sale, the property may be redeemed.
Dated: June 10, 1976.
GRAHAM MORTGAGE CORPORATION, Assignee of Mortgage.
John A. Hird, Attorney for Assignee of Mortgage, 2331 Commonwealth Bldg., Detroit, Michigan 48226. June 17-24-July 1-8-15

STATE OF MICHIGAN
The Probate Court for the County of Washtenaw.
File No. 65718
Estate of NATHAN B. KELSAY, Deceased.
TAKE NOTICE: On July 27, 1976, at 10:00 a.m., in the Probate Courtroom, Washtenaw County Building, Ann Arbor, Michigan, before the Hon. Rodney E. Hutchinson, Judge of Probate, there will be held on the petition of Agnes R. Kelsay for admission of instrument to probate, a purported will of the deceased, dated September 6, 1966, and for granting of administration to Robert Patrick Kelly, or some other suitable person, and for appointment of William H. Price as Guardian Ad Litem for Ruth Ann Kelsay, minor, and to determine the heirs of said deceased.
Creditors of the deceased are notified that all claims against the estate must be presented to the Probate Court at 117 North First Street, Suite 21, Ann Arbor, Michigan, 48108, and a copy filed with the court on or before August 31, 1976.
Notice is further given that the estate will be assigned to persons entitled thereto.
Dated: June 24, 1976.
Agnes R. Kelsay, Petitioner, 2072 E. Street, Ann Arbor, Michigan 48104
Attorney for Petitioner: Jack J. Garris, P 13860, 117 North First Street, Suite 21, Ann Arbor, Mich. 48108. Phone 761-7222. July 8

TYPIST NEEDED
Position now open.
Accurate, 65.00 wpm.
Learn a fascinating new skill in Teletypesetter perforator operation.
Apply in Person
The Chelsea Standard
300 N. Main St. Ph. 475-1371



A STARBURST OF FIREWORKS filled the sky in cities and towns across the nation as our 200th year of independence was celebrated in cities and towns throughout the country. Here, two aerial bursts exploded simultaneously above the crowd at Chelsea's Fairgrounds. Thousands of area residents were on hand to view the display Sunday evening following the annual 4th of July outdoor barbecue and ice cream social which marked Bicentennial Day in Chelsea.

Little Leaguers Show Hustle
Youth baseball began its 1976 season with a number of close games in Little League and Pony League. All the young men and women seem to have the hustle and desire to do their best, especially the T-Ballers. In all, 20 games were played with one postponed due to a lightning storm.
In Pony League two extremely close games were played and won by Dennis Petsch's team. Tuesday, Petsch's team won, 3-2, over a good Todd Sprague's nine. The winning hit was a single to center in the bottom of the last inning. On Wednesday Petsch's team beat a strong Wojcicki team, 2-0. The score was 0-0 through the first four innings. In other games that week, Wojcicki's squad shut out Owings, 8-0. Schrotenboer's team won two, 11-2, over the Owings club and 17-5 over Jim Sprague's team. Todd Sprague's nine bounced back and won, 6-2, over Jeff Sweet's team. Sweet's chargers got their first win by beating Jim Sprague's squad, 13-6.

PONY LEAGUE
Standings as of June 25

Team	W	L
Schrotenboer	2	0
Petsch	2	0
Wojcicki	1	1
Sweet	1	1
T. Sprague	1	1
J. Sprague	0	2
Owings	0	2

The action in Little League was highlighted by an extra inning affair won by Fred Hoffman's squad, 3-2, over Schaffner's team. Both coaches spoke very

District Court Proceedings
Week of June 29 to July 5
Calvin Heiber pled guilty to charges of drunk and disorderly. Fines and costs, \$75.
John P. Withus was sentenced to pay fines and costs of \$350 or to 60 days in jail on charges of possession of marijuana and impaired driving.
Roy Wiebusch was sentenced to pay fines and costs of \$250 or to 30 days in jail on charges of impaired driving. He was also sentenced to pay fines and costs of \$50 on charges of possession of open alcohol in a motor vehicle.
Patricia M. Dinam, arraigned on a bench warrant, pled guilty to charges of violation of probation and to charges of drunk and disorderly. She was sentenced to 10 days in jail to be suspended as soon as fines and costs of \$25 are paid.
Daniel Tormey pled guilty to charges of public intoxication. Fines and costs, \$50.
Harold Omer was sentenced to pay fines and costs of \$250, to the Alcohol Safety Action Program, and to six months probation on charges of driving under the influence of liquor.
Glen A. Brown was found guilty on charges of disregarding a stop sign. Fines and costs, \$100.
Robert Johnson was issued a bench warrant for failure to appear in court on charges of speeding and disregarding a stop sign.
Virginia Cunningham was found guilty on charges of dog at large. Fines and costs, \$50.
Bobby D. Akers was sentenced to 90 days in the County Jail on charges of driving under the influence of liquor.
Robert White pled guilty to charges of indecent exposure. He was referred to probation and will be sentenced August 16.
Steven Krull pled guilty to charges of careless driving. Fines and costs, \$30.
Steven Cole pled guilty to charges of careless driving. Fines and costs, \$30.
Bobby D. Akers was found guilty on charges of violation of probation and fleeing a police officer. He was sentenced to 20 days in the county jail concurrent with his previous sentence of 90 days in the county jail.
Gary Lamkin was sentenced to pay fines and costs of \$70 and to 10 days in jail to end when the \$70 is paid.

ANNOUNCING
Hope Bushnell,
U. of M. Graduate of Real Estate Institute
Member Ann Arbor Board of Realtors
Multiple Listing Service
Now Doing Business As
BUSHNELL REALTY
475-7180
Please call for Real Estate service

PONDS & LAKES DUG
DITCHES CLEANED
BULLDOZING
FREE ESTIMATES
Phone 475-8121 or 475-7959 after 5 p.m.

FOR SALE:
EXECUTIVE QUALITY BRICK HOME
IN THE CHELSEA AREA
3 bedrooms, formal dining room, fireplace and recreation room with walk-out basement, on 3 well-landscaped acres near village limits.
Evenings call Evelyn White
475-7551
REAL ESTATE ONE

THINKING ABOUT
OPENING YOUR POOL
— or —
JUST HAVING PROBLEMS
WITH IT
We are willing to help. Just give us a call (426-4220) or stop out and see us at:
CRYSTAL CLEAR COMPANY
4757 Dexter-Pinckney Rd. Dexter, Michigan
Above-Ground & In-Ground Pool
SERVICE - SUPPLIES - CHEMICALS
Residential and Commercial Pool Openings
Acid Washing - Painting and Repairs.
Summer Store Hours: Mon. thru Fri., 10-6
Saturdays 8-6
Master Charge and BankAmericard Welcome!

FOR PROFIT
FEED
Feed Formulas Tested, Proved To Get Results
Extra proteins, vitamins and minerals in proper balance, scientifically blended, make our feeds real profit producers for you.
Farmers' Supply Co.
Phone GR 5-5511

More than 200,000 persons a State University. It is near year visit the W.K. Kellogg Bird Hickory Corners northeast Sanctuary operated by Michigan Kalamazoo.

REAL ESTATE CLASSES
Coming to Chelsea High School
in September
For more information call
HOLLOWAY REAL ESTATE INSTITUTE
(616) 965-3347

SOUTHERN BOY MANOR
MOTEL
Efficiency Units - By Day, Week, or Month
13190 M-52
PHONE (517) 851-4213
(2 miles south of Stockbridge)

DESIRABLE
1-acre building site overlooking beautiful lake with easy access to Ann Arbor. A bargain at only \$5,000. No problem with perk. Call 475-7322 for details.
Real Estate One.
OF WASHTENAW
REALTORS
AL KLEIS 475-7322 1196 M-52, Chelsea 475-8693

CUSTOM
BUMPING and PAINTING
FREE ESTIMATES - ALL MAKES
Get the Best for Less!
FRANK GROHS CHEVROLET
Phone 426-4677 Dexter, Mich.

PRINTING and COPY SERVICE
From your Camera-ready Master, we will print
★ SINGLE SHEETS
★ NEWSLETTERS
★ BOOKLETS
★ BULLETINS
★ FLYERS
★ ADVERTISEMENTS
WHITE OR COLORED STOCK
Fast, Economical Service
Also Photo Copy Service for Individual Copies - 10c each
CALL FOR PRICES AND FURTHER DETAILS
DICK McINNIS
a part of Dexter Card and Gifts
426-4991

NOTICE
Notice Is Hereby Given that all
NOXIOUS WEEDS
grown on any land anywhere within the Village of Chelsea
MUST BE CUT DOWN
- or -
DESTROYED AT ONCE
Failure to comply with this notice on or before the absolute deadline,
TUESDAY, JULY 15
shall make the owner of such property liable for the cost of cutting such weeds as done by the village.
Persons desiring someone to mow lots should contact the Village Administrator. Village will be having their property mowed at same time.
VILLAGE OF CHELSEA
GEORGE MERANUCK, Noxious Weed Officer

Waterloo Area
Bicentennial Celebration
Waterloo Village July 9-10-11
FRIDAY, JULY 9th—
4:00 p.m.—Games for all ages.
5:00 p.m.—Woman's Crosscut Saw Exhibition.
6:00 p.m.—Horseshoe Pitching Contest.
Sodbusters vs. Madison St. Fire Brigade.
6:30 p.m.—Ballgame. Waterloo Lilies vs. Wild Woolly Lambs.
SATURDAY, JULY 10th—
2:00 p.m.—Parade. The PRIZE-WINNING WATERLOO FLOAT, Velocipedes, Antique Cars and Tractors, Waterloo Band, and much more. Following, fun and games for all ages at school grounds.
7:30 p.m.—CHALLENGE ON WATERLOO POND.
Waterloo's Sodbusters vs. ? ? ? ?
9:00 p.m.—STREET DANCE, featuring Garry Klink and his Sodbusters.
SUNDAY, JULY 11th—
CHURCH
1:00 p.m.—Old Fashion PICNIC. Bring your own service, chicken, and dish to pass.
BALLGAME, Little Sodbusters vs. ? ? ? ?
IN OUR WATERLOO TOWNHALL
Display of old pictures, clippings of Waterloo Area.

+ Services in Our Churches +

CONGREGATIONAL CHURCH
(United Church of Christ)
The Rev. Carl Schwarm, Pastor
Sunday, July 11—
9:30 a.m.—Worship. No choir.

OUR SAVIOR LUTHERAN CHURCH
1515 S. Main, Chelsea
The Rev. William H. Keller, Pastor
Thursday, July 8—
Mark 4:35-41.
Sunday, July 11—
9:00 a.m.—Worship service.
Monday, July 12—
Newspaper article dealing.
Tuesday, July 13—
8:00 p.m.—Church Council.
Wednesday, July 14—
Mark 5:24-34.

ZION LUTHERAN CHURCH
Corner of Fletcher, Waterville Rd.
The Rev. John R. Morris, Pastor
Sunday, July 11—
9:00 a.m.—Sunday school.
10:15 a.m.—Worship.

BAHA'I FIRESIDE
Every Thursday—
8:00 p.m.—At the home of Tony Peterson, 705 S. Main St. Anyone wishing to learn about the Baha'i faith is welcome.

FIRST CHURCH OF CHRIST SCIENTIST
1883 Washtenaw Ave., Ann Arbor
Every Sunday—
10:30 a.m.—Sunday school, morning service.

ST. JOHN'S EVANGELICAL AND REFORMED CHURCH
(United Church of Christ)
Francisco
The Rev. Virgil King, Pastor.
Every Sunday—
10:30 a.m.—Church services.

FIRST UNITED PRESBYTERIAN CHURCH
Unadilla
The Rev. T. H. Liang, Pastor
Every Sunday—
9:45 a.m.—Sunday school.
11:00 a.m.—Worship service.

SALEM GROVE UNITED METHODIST CHURCH
3320 Notten Rd.
The Rev. Gerald R. Parker, Pastor
Every Sunday—
9:30 a.m.—Sunday school.
10:30 a.m.—Worship service.

BETHEL EVANGELICAL AND REFORMED CHURCH
(United Church of Christ)
Freedom Township
The Rev. Roman A. Reineck, Pastor
Every Sunday—
10:00 a.m.—Worship service.

GREGORY BAPTIST CHURCH
The Rev. Paul White, Pastor
Every Sunday—
9:45 a.m.—Sunday school.
11:00 a.m.—Morning worship.
6:00 p.m.—Young people.
7:00 p.m.—Evening worship.
7:30 p.m.—Thursday mid-week worship service.

NORTH LAKE UNITED METHODIST CHURCH
The Rev. David Stiles, Pastor
Every Sunday—
8:30 and 10:00 a.m.—Worship service.

ST. BARNABAS EPISCOPAL CHURCH
20550 Old US-12
The Rev. Fr. Jerrald F. Beaumont, B.S.P.
Every Sunday—
10:00 a.m.—Holy Communion first, third and fifth Sundays, and 8 p.m. every Wednesday.
10:00 a.m.—Morning prayer. Second and fourth Sundays. Church school and nursery every Sunday.
Every Wednesday—
9:00 p.m.—Study and discussion groups.
First Wednesday of every month Bishop's Committee.
Third Thursday of every month—Episcopal church women.

CHELSEA BAPTIST CHURCH
377 Wilkinson St.
The Rev. James Stacey, Pastor
Every Sunday—
9:45 a.m.—Sunday school for the whole family.
11:00 a.m.—Morning worship service and children's church.
7:00 p.m.—Evening service, informal singing, sharing, study and discussion. (Nursery care provided for all services.)
Home Bible Studies each week in the homes of the leaders.
Teen Ministry, Sunday at 6 p.m. and study groups during the week.

ST. JACOB EVANGELICAL LUTHERAN CHURCH
12501 Riethmiller Rd., Grass Lake
The Rev. Andrew Bloom, Pastor
Every Sunday—
9:00 a.m.—Worship service.
10:15 a.m.—Divine services.

ST. JOHN'S UNITED CHURCH OF CHRIST
Rogers Corners
Every Sunday—
10:30 a.m.—Worship service.

FARLEY CONSTRUCTION
522 HOWARD RD.
ADDITIONS • REMODELING
REPAIRS
NEW HOMES
475-8265 or 475-7643

ST. PAUL UNITED CHURCH OF CHRIST
The Rev. R. J. Ratcliff, Pastor
Thursday, July 8—
No Spiritual Life meeting.
Sunday, July 11—
9:00 a.m.—Summer worship service.

IMMANUEL BIBLE CHURCH
145 E. Summit St.
The Rev. Leroy Johnson, Pastor
Every Sunday—
8:45 a.m.—Sunday school, nursery provided.
11:00 a.m.—Morning worship nursery provided.
6:00 p.m.—Evening worship.
Every Wednesday—
7:00 p.m.—Family hour, prayer meeting, and Bible study.

CHURCH OF CHRIST
13001 Old US-12, East
Evangelist John M. Hamilton
Every Sunday—
10:00 a.m.—Church school.
11:00 a.m.—Worship service.
Nursery will be available.
8:00 p.m.—Worship service.
Every Wednesday—
7:30 p.m.—Bible study.

NORTH SHARON BIBLE CHURCH
Sylvan and Washburne Rds.
The Rev. William Enstien, Pastor
Every Sunday—
10:00 a.m.—Sunday school.
11:00 a.m.—Worship service.
(Nursery will be available.) Junior church classes.
6:00 p.m.—Senior High Youth meeting. Youth Choir.
7:00 p.m.—Evening worship service. (Nursery available.)
All services interpreted for the deaf.
Every Wednesday—
7:00 p.m.—Bible study and prayer meeting. (Nursery available.)
Bus transportation available: 428-7222.

CHURCH OF JESUS CHRIST OF LATTER-DAY SAINTS
Meetings at
St. Barnabas Episcopal Church
20500 Old US-12
Every Sunday—
11:00 a.m.—Priesthood meeting.
12:30 p.m.—Sunday school.

FIRST UNITED METHODIST CHURCH
The Rev. Marvin H. McCallum, Pastor
Sunday, July 11—
10:00 a.m.—Worship service. nursery provided. Guest speaker, he Rev. Ralph Harper.
11:00 a.m.—Punch Hour in the Parthenon.
Tuesday, July 13—
9:30 a.m.—Charismatic Bible Sharing Group will meet in the educational unit.

F. MARY CATHOLIC CHURCH
The Rev. Fr. David Philip Dupuis, Pastor
Mass Schedule:
Every Saturday—
4:00-5:00 p.m.—Confessions.
7:00 p.m.—Mass.
Immediately after 7 p.m. Mass—
confession.
Every Sunday—
Winter schedule:
7:00, 9:00, 11:00 a.m.—Mass.

ST. THOMAS EVANGELICAL LUTHERAN
Elsworth and Haab Rds.
The Rev. Jerome Dykstra, Pastor
Sunday, July 11—
9:30 a.m.—Sunday school and Bible class.
10:45 a.m.—Worship service.

FIRST ASSEMBLY OF GOD
The Rev. Richard Coury, Pastor
Every Sunday—
9:45 a.m.—Sunday school.
11:00 a.m.—Worship service.
6:00 p.m.—Evening worship.
Every Wednesday—
7:00 p.m.—Christ's Ambassadors. Missionettes. Bible meditation and prayer.

WATERLOO VILLAGE UNITED METHODIST CHURCH
8118 Washington St.
Every Sunday—
10:00 a.m.—Sunday school.
11:00 a.m.—Worship service.

FIRST UNITED METHODIST
Parks and Territorial Rds.
Every Sunday—
9:15 a.m.—Morning worship.
10:00 a.m.—Sunday school.



HORSE SHOE PITCH

There will be a horseshoe pitching contest on Aug. 17, 1976 at the Chelsea Fairgrounds. The contest will start at 1:00 p.m.

This will be a single person event, which will consist of double elimination. There will be prize for the top 5 throwers. Contestants must supply their own horseshoes.

If any questions, call Dennis Petsch, 475-8494.

Sponsored By

Chelsea Bicentennial Committee

A Standard Want Ad Gets Results!

PLANNING PICNICS or SUMMER OUTINGS?

We offer complete dining facilities and carry-out service.

HOME-MADE PIZZAS after 5

COMPLETE DINNERS - SNACKS - SANDWICHES

HOURS: Tues. thru Sunday, 11 a.m. to 10 p.m.
Closed Mondays.

LITTLE ROOSTER RESTAURANT

Phone 426-8668 11485 N. Territorial Rd.

Methodists Choosing Two New Bishops

A Methodist minister from Chelsea will be one of 34 delegates from the Detroit Annual Conference to the denomination's Jurisdictional Conference, July 13-15, in Sioux Falls, S. D.

The Rev. Marvin McCallum, minister of the Chelsea United Methodist church will be among the 400 delegates present at the Sioux Falls conference where two new bishops will be elected.

Mrs. Jane Schairer, a member of the Chelsea church, will also be a delegate. Mrs. Schairer is the head of the lay delegation from the Detroit area.

Bicycling Group To Appear at Methodist Church

A group of 50 bicycling high school students from Fraser, will present a program of music at the Chelsea United Methodist church on Tuesday, July 13 at 7:30 p.m.

The young people formed from a group known as the Spokesmen, represent the Christ United Methodist church in Fraser. The group derives its name from their Christian witness tradition.

Formed in 1970, the group has bicycled more than 6,000 miles to give many concerts throughout the state.

The program at the Chelsea United Methodist church is free and the public is invited to attend.

Michigan State University offers one of the best programs in the country for executives pursuing the master's degree in business administration and the doctoral degree in business, according to a 1976 Business Week evaluation. MSU was the only university listed in both categories.

Noise pollution is so common in congested areas that residents of major metropolitan areas are exposed to many sound levels that are potentially damaging to their ability to hear without even being aware of the danger, according to hearing specialists.

BOWLING INSTRUCTIONS By Qualified Pro

Learn-To-Bowl program

July 13 at 1 p.m. and 7:30 p.m.

If you'd like to learn to bowl, now is the time.

Instructions open to everyone.

Enjoy Bowling in the Area's Most Modern Center

CHELSEA LANES, Inc.

1180 M-52 Ph. 475-8141

Standard Want Ads Will Find A Buyer for You!

There's No Substitute for Protein in a Hog Ration

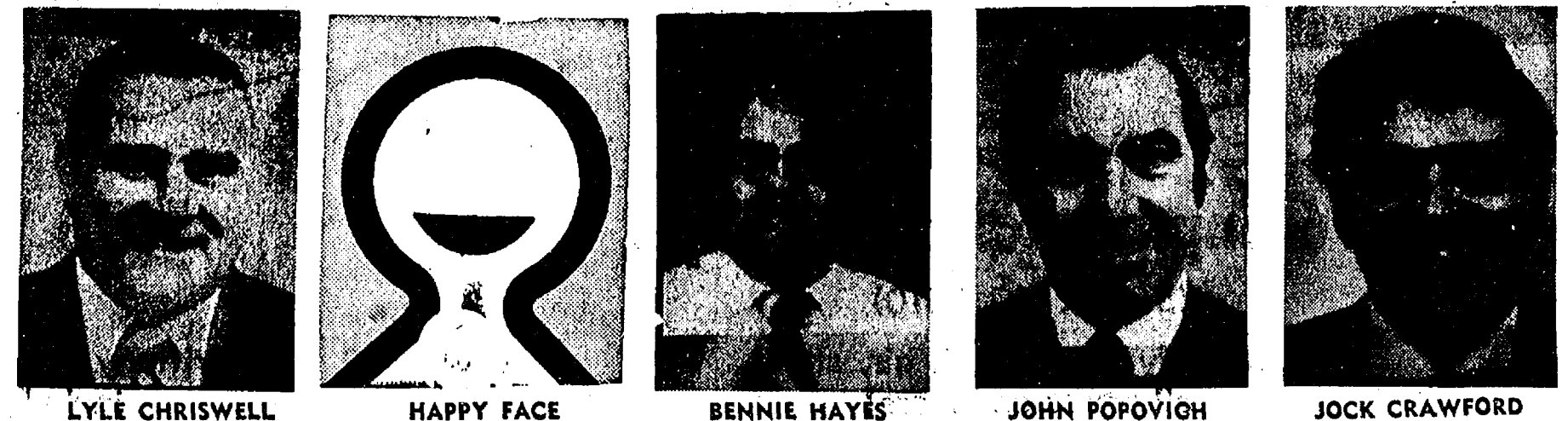
Protein builds meaty hogs and puts weight on fast. Protein-deprived hogs take longer to reach market weight and time is money. Don't waste corn. Balance it with Wayne 40% Pig Balancer and make the best possible use of facilities, time, grain and your investment. It's ideal for pigs from 50 to 125 lbs.

Eat More Pork



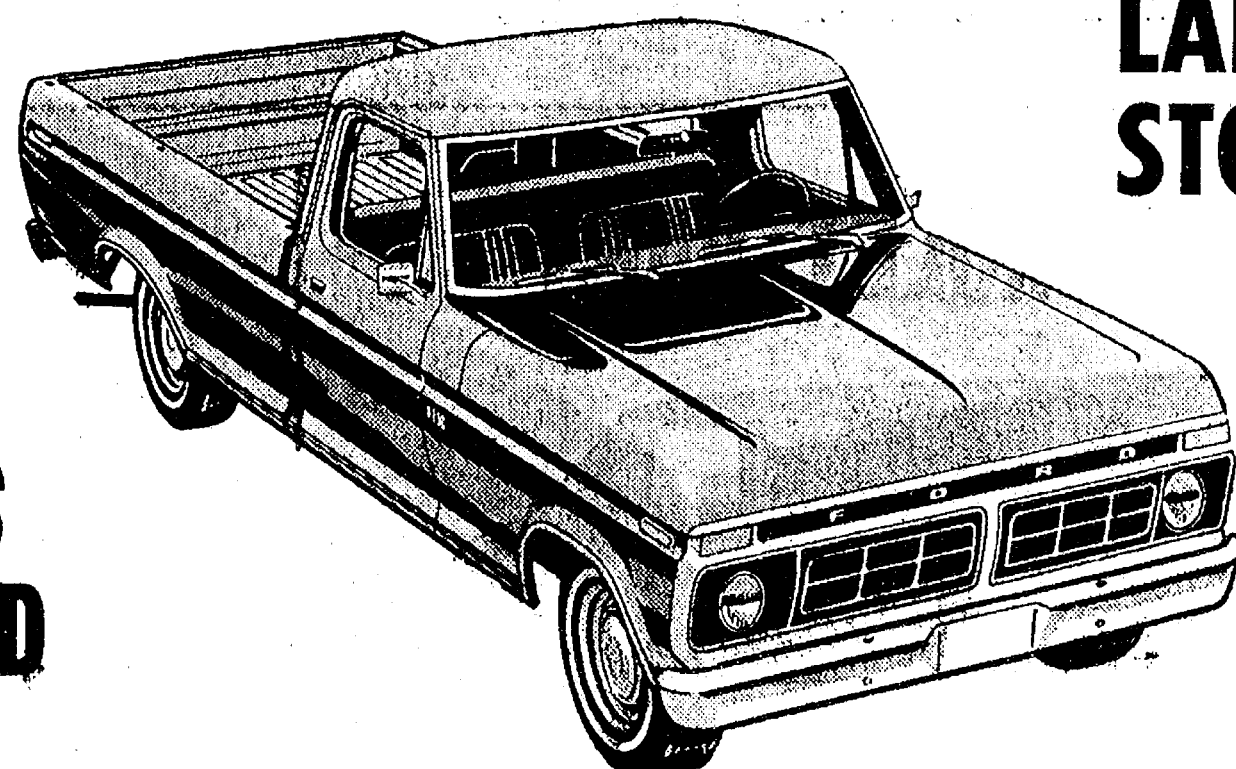
McCALLA FEED SERVICE
12875 Old US-12 Chelsea
PHONE 475-8153

13th ANNUAL PICK-UP SALE



ALL PRICES REDUCED

ONLY \$3176⁰⁰



LARGE STOCK

For a Brand New 1976 Ford 1/2-ton Pick-Up with fresh air heater, gauges, heavy duty rear springs, chrome front bumper, bright metal grille, foam cushion seat, freight and delivery charges. (Does not include Sales Tax and License.)

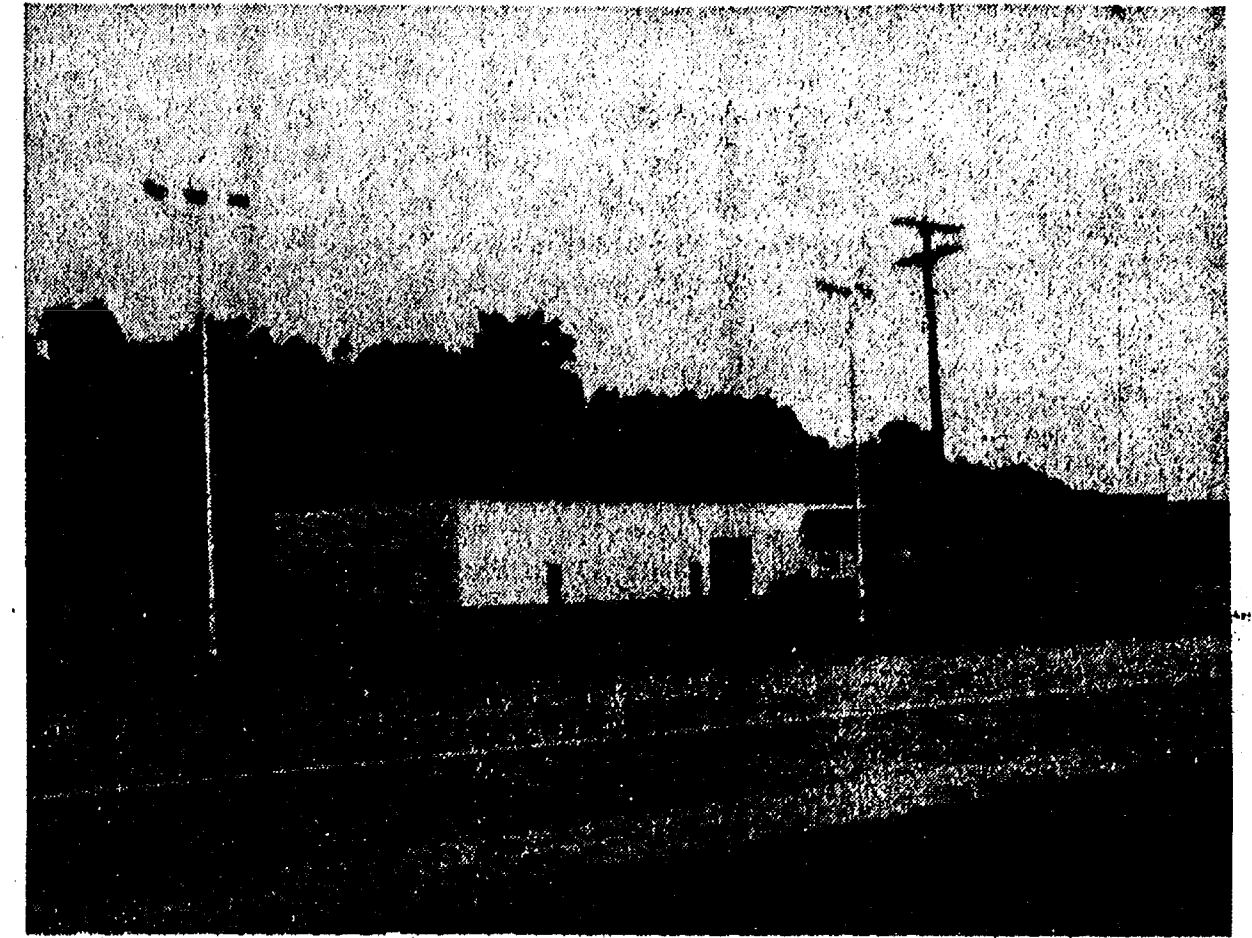
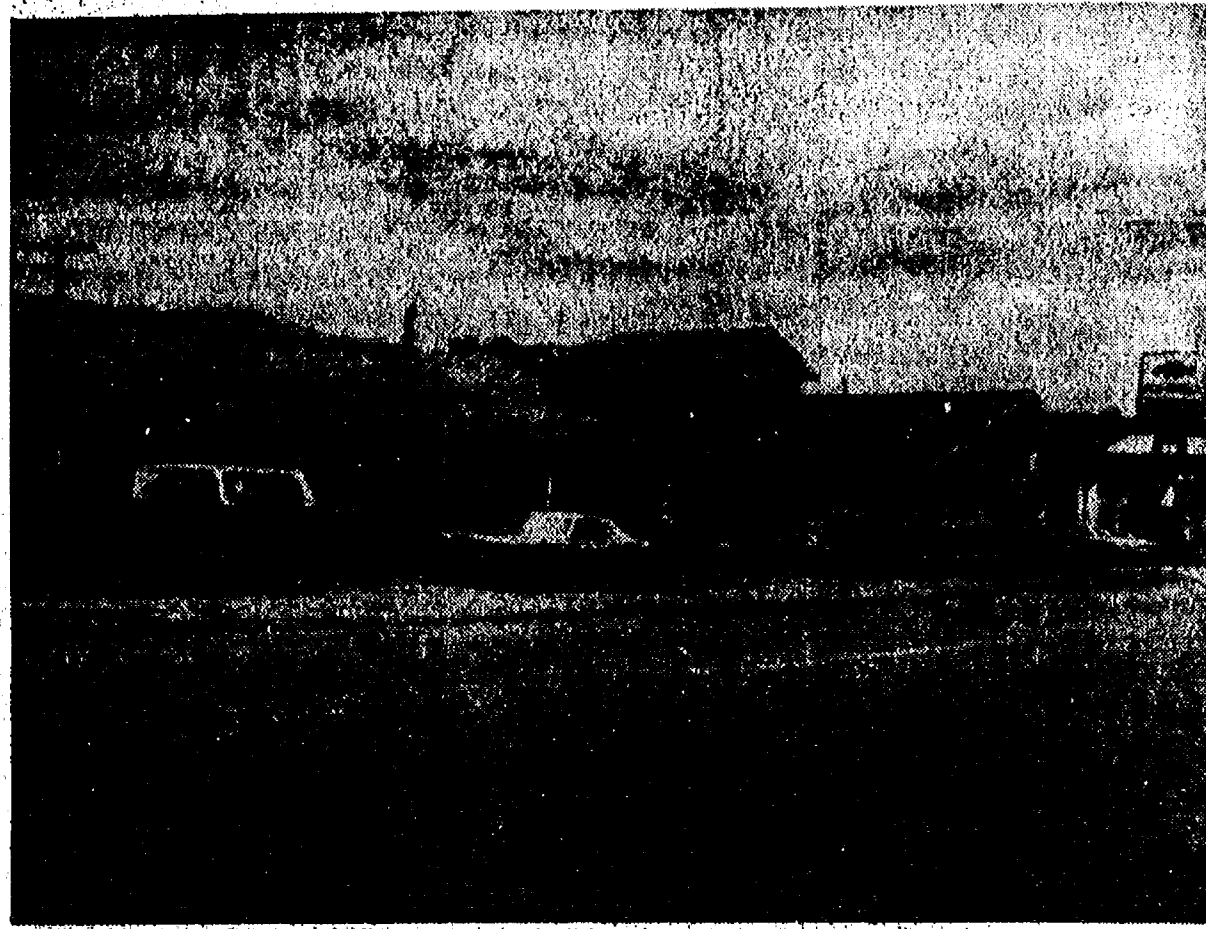
The Happyface Place®
We're in business to make you smile

PALMER FORD TRUCKS

CHELSEA SINCE APRIL 1912 (313) 475-1301
Open Monday, Tuesday, Wednesday, Thursday Till 9:00 p.m.; Friday Till 6:00 p.m.; Saturday Till 4:00 p.m.

ONLY 2 MORE DAYS!

GET SET

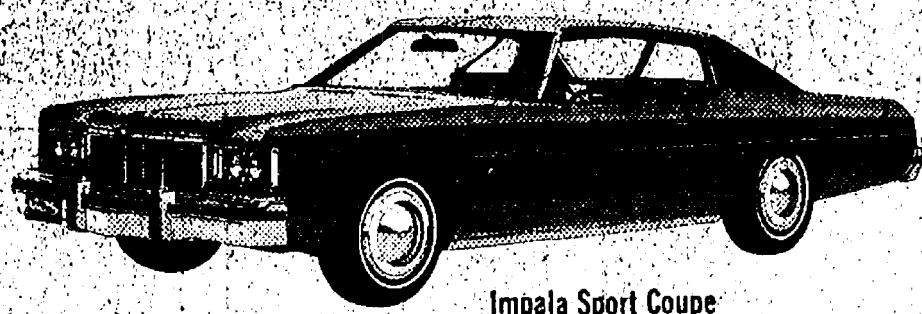


Only 2 more days in our old building and Monday, July 12th, we open

CHELSEA'S LARGEST & MOST MODERN NEW & USED CAR FACILITY

Ultra modern Service and Parts Depts., completely remodeled New Car and Motor Home showrooms, spacious and well-lit Used Car Lot . . . WOW! We're excited! The last 2 days we're still dealin' . . . so come on down and look over our selection of new and used cars and trucks.

LOOK THESE VALUES OVER!



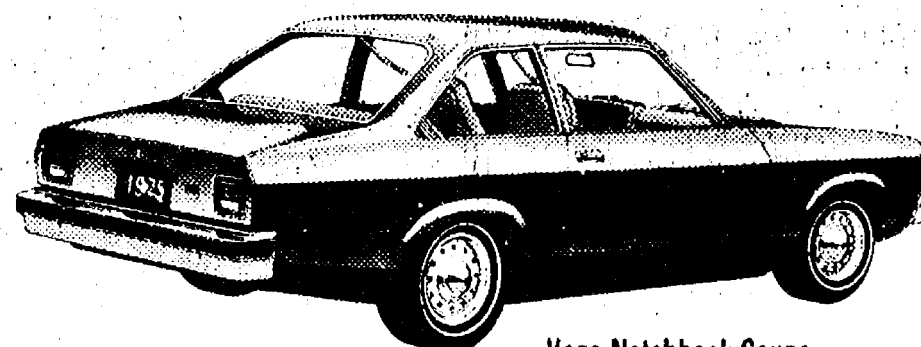
Impala Sport Coupe

1976 Impala Landau Coupe

(STOCK NO. 2610)

Completely loaded with air, stereo, all power and more!

Priced To Sell!



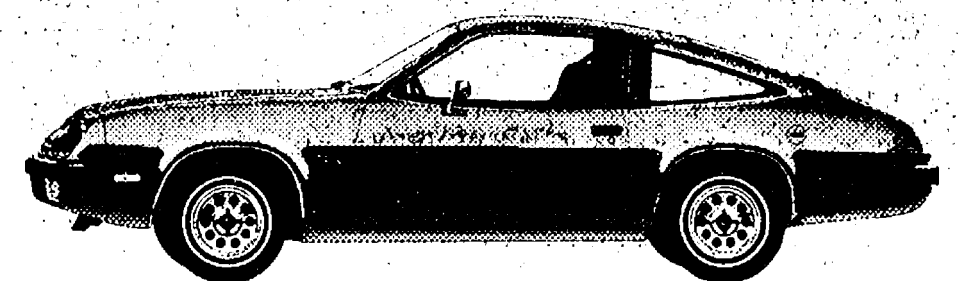
Vega Notchback Coupe

1976 Vega 2-Door

(STOCK NO. 2882)

Brittany Blue, Full factory equipment, including AM-FM stereo.

Only \$2797



Monza 2+2 Hatchback Coupe

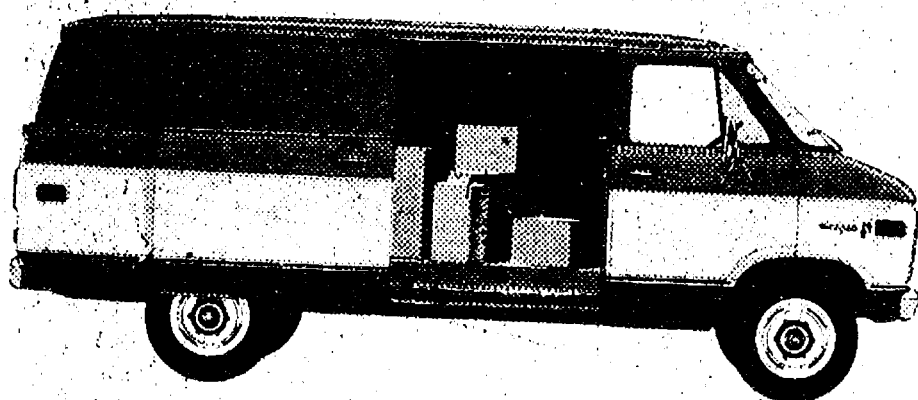
1976 Monza 2-Door

(STOCK NO. 2659)

Spirit of America package. Silver metallic.

\$200 Factory Discount

CHEVROLET VANS



We have just received a shipment of specially customized vans from Hop Cap and Gehring Corp. of Elkhart, Ind. You won't believe 'em until you see 'em!

5-Year Financing Available

CHELSEA'S NO. 1 USED CAR LOT SAYS:

Don't make us move these sharp, one-owner trade-ins.

Buy them before Friday afternoon!

1973 FORD CUSTOM 1/2-TON PICK-UP

Metallic blue with white stripes. V-8, automatic, power steering, power brakes. White Astro camper cover. 35,000 one-owner miles.

This Week Only \$2995

1975 CAMARO 2-DR. HARDTOP

Your choice of two. Both sharp, low mileage, one-owner cars. 6-cyl. or V-8.

Priced from \$3895

1969 PONTIAC LeMans Station Wgn.

White with simulated wood paneling. 8-cyl., automatic, full power and air conditioning.

This Week Only \$1295

1972 MONTE CARLO

Moondust brown metallic. Full power, factory air, AM-FM stereo. A one of a kind.

Priced To Move!

SALES HOURS:

Monday and Thursday . . . 8 a.m. to 9 p.m.
Tues., Wed., Fri. 8 a.m. to 6 p.m.
Saturday 8 a.m. to 5 p.m.

LLOYD BRIDGES CHEVROLET

For Quality, Service and Price "Travel With Lloyd"

405 N. MAIN ST., CHELSEA

PHONE 475-1373

SERVICE and PARTS HOURS:

Monday thru Friday
7:30 a.m. to 5 p.m.

OLD-FASHIONED LOCK STOCK & BARREL SALE

All Prices Effective
Thru Saturday July 10, 1976



polly's on n. west ave. & spring arbor rd.

OPEN 24 HOURS

(EXCEPT SATURDAY MIDNITE 'TIL SUNDAY 8 a.m.)

all other polly's open

DAILY... 8 a.m. 'TIL 10 p.m.

SUNDAY... 9 a.m. 'TIL 9 p.m.



Polly's MASTER MARKETS

1101 M-52

CHELSEA, MICH.

(Corner M-52 and Old U.S. 12)

MINUTEMAID

LEMONADE

5

6-oz.
cans

\$1

with
in-store
coupon

GLACIER CLUB

ICE CREAM

1/2 GAL.

79¢

U.S. NO. 1 B-SIZE
California

POTATOES

20-LB.
BAG

\$1.89

ASSORTED

FAYGO POP

12

16-oz.
Bottles

\$1.98

SAVE 60¢
with coupon



HILLS BROS.

COFFEE

\$2.99

2-LB.
CAN

with in-store coupon



PURE VEGETABLE

**WESSON
OIL**

99¢

38-oz.

with in-store coupon



GOOD OLE' SUMMERTIME

**EVERYDAY
LOW
PRICES!!**

OPEN PIT BARBECUE SAUCE	16-oz.	59¢	SMUCKER STRAWBERRY JAM	22-oz.	\$1.39
OPEN PIT BARBECUE SAUCE	28-oz.	89¢	FANNINGS BREAD & BUTTER PICKLE	14-oz.	49¢
OPEN PIT BARBECUE SAUCE	42-oz.	\$1.19	KRAFT CREAMY GARLIC	16-oz.	79¢
WEAVER GRAPE JELLY	46-oz.	\$1.29	PRINGLES POTATO CHIPS	9-oz.	89¢
HENZ GENUINE DILLS	32-oz.	89¢	KRAFT AMERICAN SINGLES	16-oz.	\$1.39
GENTLE FELS DISH DETERGENT	22-oz.	49¢	KRAFT SLICED AMERICAN	12-oz.	89¢
FOR YOUR TOILET SNO-BOL	28-oz.	89¢	PHILADELPHIA CREAM CHEESE	8-oz.	59¢
DOLLY MADISON BATHROOM TISSUE	8-roll pack	\$1.19	DELMONTE FRUIT COCKTAIL	16-oz.	49¢
BAKER FLAVORED CHOCOLATE CHIPS	12-oz.	89¢	DELMONTE SLICED ELBERTA PEACHES	16-oz.	49¢
RED HAWAIIAN PUNCH	64-oz.	79¢			

GREEN GIANT specials

- 12-oz. Niblet corn
- 17-oz. Cream Corn
- 17-oz. Sweet Peas
- 16-oz. Kitchen Sliced Beans
- 16-oz. French Green Beans

mix or match

4 CANS FOR \$1



your choice!

- Keebler*
- Chocolate Fudge
 - Pitter Patter
 - French Vanilla
- 16-oz. **79¢**

SMUCKERS STRAWBERRY PRESERVES
18-oz. JAR **79¢** with in-store coupon

CHIFFON Lemon Dish Detergent
12-oz. Bottles **3 \$1**

COFFEE
2-LB. CAN **\$2.99** with in-store coupon

Coast **NEW!!**
DEODORANT SOAP

Bath Bar **37¢**
Complexion Bar **29¢**

PURE VEGETABLE WESSON OIL
38-oz. **99¢** with in-store coupon

NEW!! HAWAIIAN PUNCH
64-oz. glass jar **69¢** with in-store coupon

FRIENDLY SERVICE!!

WHICH WE AT POLLY'S HAVE EMPLOYED SINCE 1936...

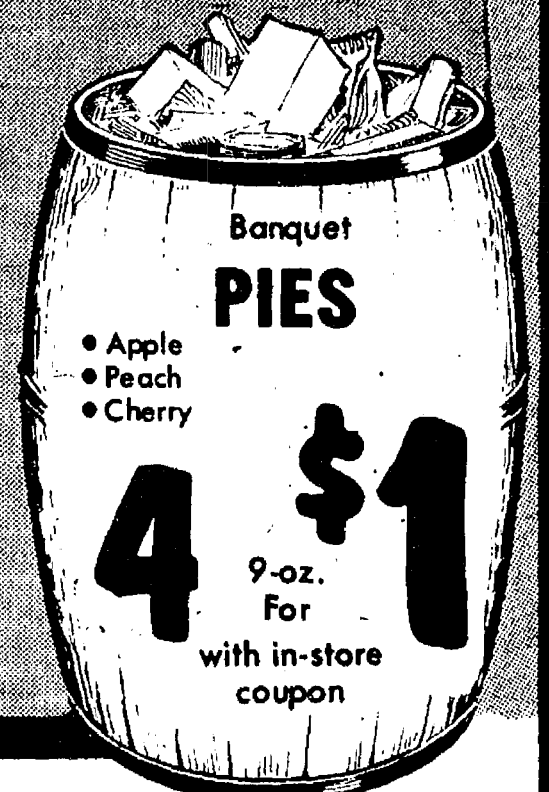
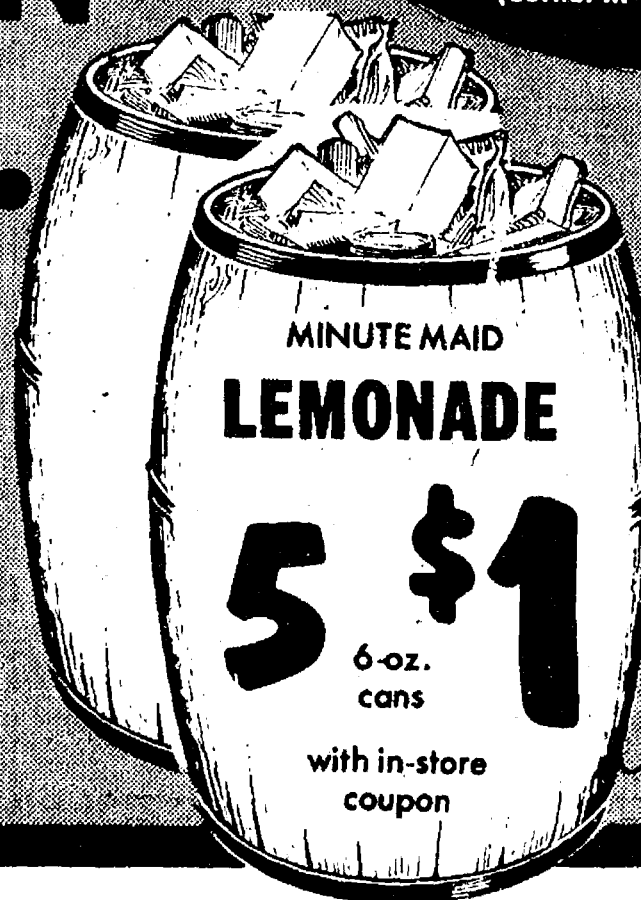
Polly's MASTER MARKETS

1101 M-52
CHELSEA, MICH.
(Corner M-52 and Old U.S. 12)



FROZEN FOOD...

SCOT LAD
ORANGE JUICE
15-oz. **55¢**
HORTON POWDERED
SUGAR DONUTS
10-oz. **65¢**
HORTON
SUNDAE CONES
6-PK. **69¢**



Fresh!!

BAKED GOODS

HOLSUM

SANDWICH BREAD

20-oz. LOAF

49¢

HOSTESS

TWINKIES or CRUMB CAKES

4 2-PKS. FOR 89¢

BORDEN
Glacier Club

ICE CREAM

1/2 Gal.

79¢

QUEEN of SCOT CUT

GREEN BEANS

4 9-oz. for \$1

SCOT LAD

WAFFLES

5 5-oz. FOR \$1

SPRING ARBOR RD.

SNACK BAR...

Tuesday: Chip Beef on Toast and salad..... **.99**

Wednesday: Meat Loaf, Mashed Potatoes & cole slaw..... **\$1.29**

Thursday: Polly Broasted Chicken, Mashed Potatoes & cole slaw..... **\$1.29**

Friday: Macaroni & Cheese with Tossed Salad..... **.99**

Saturday: Sloppy Joe & F. Fries & cole slaw..... **.99**

WEEKLY FEATURE

ROOT BEER FLOAT

EA. **39¢**

DAISY...DAISY...COME GET THESE



Polly's MASTER MARKETS

1101 M-52

CHELSEA, MICH.

(Corner M-52 and Old U.S. 12)

Fresh Fruit and Produce BARGAINS!

**If You Want Fresher
Produce Than We
Sell at Polly's,
You'll Have to Pick
It Yourself!**

FRESH

BLUEBERRIES

PINT

79¢

SWEET & LUSCIOUS

NECTARINES

LB.

39¢

CALIFORNIA VALENCIA

ORANGES

DOZEN

89¢

88-size

U.S. NO. 1 CALIFORNIA

POTATOES

B-SIZE

20-LB.
BAG

\$1.89

FRESH GREEN

CABBAGE

LB.

12¢

HOMEGROWN SQUASH

ZUCHINI

LB.

29¢

SNO-WHITE

MUSHROOMS

LB.

99¢

HOMEGROWN YELLOW

SQUASH

LB.

29¢

BARGAINS!

Save
up to
\$10.09
with Polly's Bonus
& in-store coupons

DELMONTE PEARS	16-oz.	41¢	CISCO SHORTENING	5-LB.	\$1.39
DELMONTE CHOPPED SPINACH	16-oz.	27¢	KRAFT MIRACLE WHIP	32-oz.	85¢
DOMINO CANE SUGAR	5-LB.	\$1.15	DEBLY BEEF TAMALES	13-oz.	49¢
DOMINO CANE SUGAR	10-LB.	\$2.29	RAGU ICE CREAM	14-oz.	49¢
DAW BEET SUGAR	5-LB.	\$1.09	ASSORTED CLASSIC RELISHES	10-oz.	37¢
DAW BEET SUGAR	10-LB.	\$2.15	UNDERWOOD DEVILED HAM	2 4-oz. for	89¢
PELLSURY CAKE MIXES	19-oz.	57¢	UNDERWOOD CHICKEN SPREAD	2 4-oz. for	89¢
SUNSHINE HYDROX COOKIES	19-oz.	79¢	UNDERWOOD ROAST BEEF	2 4-oz. for	89¢
GOLD MEDAL FLOUR	10-LB.	\$1.65	GLAD SANDWICH BAGS	40-ct.	25¢
PELLSURY FLOUR	10-LB.	\$1.65	MOTT'S PRUNE JUICE	40-oz.	59¢
PELLSURY FLOUR	5-LB.	85¢			

VANITY FAIR
PAPER TOWELS
2 Jumbo Rolls 89¢ with in-store coupon

PILLSBURY
FLOUR
69¢ with coupon
5-LB.
VETS
NUGGETS
\$3.99 with coupon
25-lb.

HILLS BROS.
INSTANT COFFEE
\$2.19 with coupon
10-oz. JAR

JOHNSON'S
BABY OIL
77¢ with coupon
4-oz.
SCHICK
SUPER II
TWIN BLADE CARTRIDGES
99¢ with coupon
5-CT.

VALUABLE COUPON
SAVE 60¢ ASSORTED FAYGO POP
12 16-oz. N.R.'s **\$1.98**
LIMIT 2 PER COUPON PER FAMILY*
GOOD THRU 7-10-76
Polly's

VALUABLE COUPON
SAVE 40¢ HILLS BROS. INSTANT COFFEE
10-oz. **\$2.19**
LIMIT 1 PER COUPON PER FAMILY*
GOOD THRU 7-10-76
Polly's

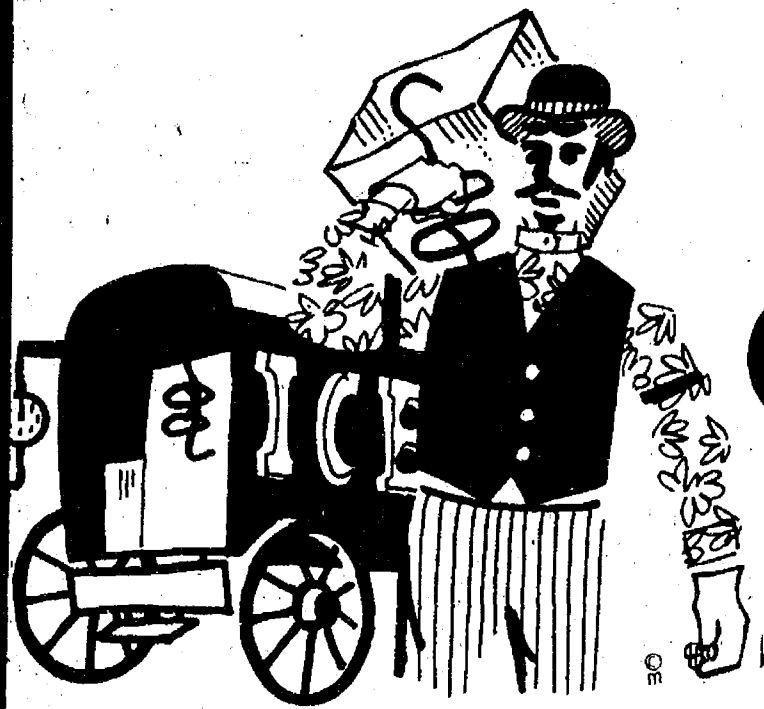
VALUABLE COUPON
SAVE 14c PILLSBURY FLOUR
5-lb. **69¢**
LIMIT 1 PER COUPON PER FAMILY*
GOOD THRU 7-10-76
Polly's

VALUABLE COUPON
SAVE \$1.60 VETS NUGGETS
25-lb. **\$3.99**
LIMIT PER COUPON PER FAMILY*
GOOD THRU 7-10-76
Polly's

VALUABLE COUPON
SAVE 40¢ CHIFFON LITE SPREAD
4 1-lb. Qtrs. **\$1**
LIMIT 4 PER COUPON PER FAMILY*
GOOD THRU 7-10-76
Polly's

VALUABLE COUPON
SAVE UP TO 32¢ Johnson's BABY OIL
4-oz. **77¢**
LIMIT 2 PER COUPON PER FAMILY*
GOOD THRU 7-10-76
Polly's

VALUABLE COUPON
SAVE UP TO 40¢ SCHICK SUPER II TWIN BLADE CARTRIDGES
5-CT. **99¢**
LIMIT 2 PER COUPON PER FAMILY*
GOOD THRU 7-10-76
Polly's



ICE MAY BE OUT OF STYLE...

POLLY PRIDE QUALITY MEATS AT POLLY'S



Polly's MASTER MARKETS

1101 M-52

CHELSEA, MICH.

(Corner M-52 and Old U.S. 12)

BE E F S A L E

POLLY PRIDE QUALITY ARM-CUT
SWISS STEAK
LB. **\$1.28**

POLLY PRIDE QUALITY BONELESS
CHUCK ROAST
LB. **\$1.28**

POLLY PRIDE BONELESS
ENGLISH POT ROAST
LB. **\$1.38**

POLLY PRIDE QUALITY
RIB ROAST
4TH/7TH
LB. **\$1.38**

POLLY PRIDE QUALITY
CHUCK STEAK
LB. **88¢**

POLLY PRIDE "KOSHER STYLE"
BEEF SHORT RIBS
POLLY PRIDE BONELESS
LB. **78¢**

BEEF STEW
LB. **\$1.38**

POLLY PRIDE QUALITY
GROUND BEEF
LB. **98¢**

FRESH HOMESTYLE
MACARONI SALAD LB. **49¢**

FRESH HOMESTYLE
POTATO SALAD LB. **59¢**

FRESH HOMESTYLE
COLE SLAW LB. **59¢**

POLLY PRIDE QUALITY
SIRLOIN STEAK
LB. **\$1.78**

POLLY PRIDE QUALITY STEAK
PORTERHOUSE
LB. **\$1.98**

POLLY PRIDE QUALITY
CLUB STEAK
LB. **\$1.98**

GOOD OLE' FASHIONED BARBECUES NEVER WERE

LOW PRICES WILL ALWAYS BE IN FASHION

POLLY PRIDE QUALITY

**CUBE
STEAK**

\$1.58
LB.

POLLY PRIDE QUALITY BONELESS

**ROUND
ROAST**

\$1.38
LB.



Polly's MASTER MARKETS

1101 M-52

CHELSEA, MICH.

(Corner M-52 and Old U.S. 12)

SCOT FARM FRESH FROZEN

BEEF PATTIES \$4.99

21¢ per serving

QUARTER
POUNDER

4-LB.
BOX
\$4.99

32¢
per serving

VEAL
STEAK

4-LB.
BOX
\$5.49

35¢
per serving

SIRLOIN
PATTIES

4-LB.
BOX
\$6.09

51¢
per serving

Poultry

**FOR SUMMER
MENUS!**



GOVERNMENT INSPECTED

**MIXED
FRYER
PARTS**

49¢
LB.

- 3 wings
- 3 forequarters w/ back
- 3 hindquarters w/ back
- giblets included



GOVERNMENT INSPECTED QUARTERED

FRYER LEGS

Back Attached LB. **59¢**

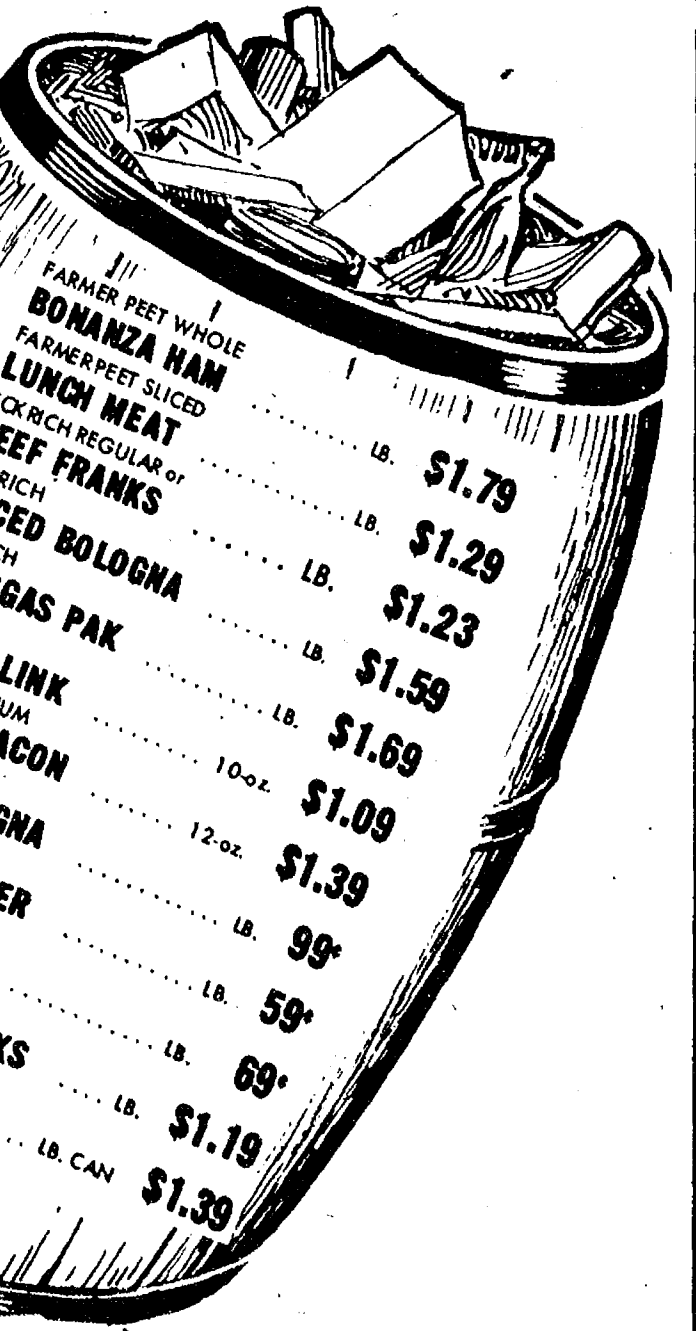
GOVERNMENT INSPECTED QUARTERED

CHICKEN BREASTS

Back Attached LB. **69¢**

**FREEZER
SPECIALS!!**

POLLY PRIDE WHOLE PORK LOIN	Sliced free	LB.	\$1.39
POLLY PRIDE STRIP STEAKS	5-lbs. or more	LB.	\$2.99
POLLY PRIDE WHOLE BEEF RIB	\$1.39 after cutting	LB.	\$1.29
POLLY PRIDE WHOLE BEEF LOIN	5-lb. or more	LB.	\$1.79



FARMER PEET WHOLE BONANZA HAM	LB.	\$1.79
FARMER PEET SLICED LUNCH MEAT	LB.	\$1.29
ECKRICH REGULAR or BEEF FRANKS	LB.	\$1.23
ECKRICH SLICED BOLOGNA	LB.	\$1.59
ECKRICH SMORGAS PAK	LB.	\$1.69
ECKRICH SMOKY LINK	10-oz.	\$1.09
SWIFT PREMIUM SLICED BACON	12-oz.	\$1.39
FARMER PEET RING BOLOGNA	LB.	99¢
HYGRADE CHUNK BRAUNSWEIGER BOLOGNA	LB.	59¢
HYGRADE BALL PARK FRANKS	LB.	69¢
AGAR HAM PATTIES	LB. CAN	\$1.19
		\$1.39

Herrud

**GRILL
SPECIALS!!**

- RED HOTS
- CLUB FRANKS
- POLISH KIELBASA
- SMOKED SAUSAGE
- KNACKWURST

Your Choice!
14-oz. Pak

1.19



PLAIN OLD THRIFT

Polly's MASTER MARKETS
1101 M-52
CHELSEA, MICH.
(Corner M-52 and Old U.S. 12)

GOOD OLD-FASHIONED TWOSOME

DAIRY SPECIALS!

CHIFFON
**LITE
SPREAD**

Contains 60% Vegetable Oil

4 \$1
1-lb. Qtrs.

with coupon

AZTEC
**CORN
TORTILLA**

4 \$1
10-oz. PKGS.

with in-store coupon

SEALTEST
*Light n'
Lively*

**COTTAGE
CHEESE**

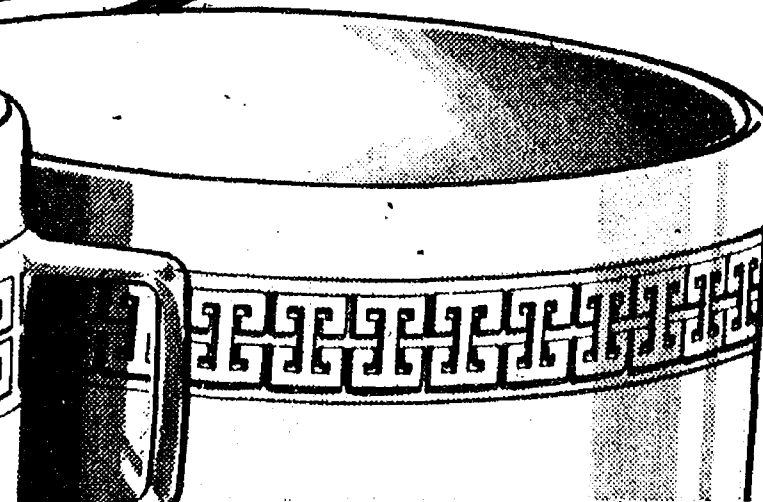
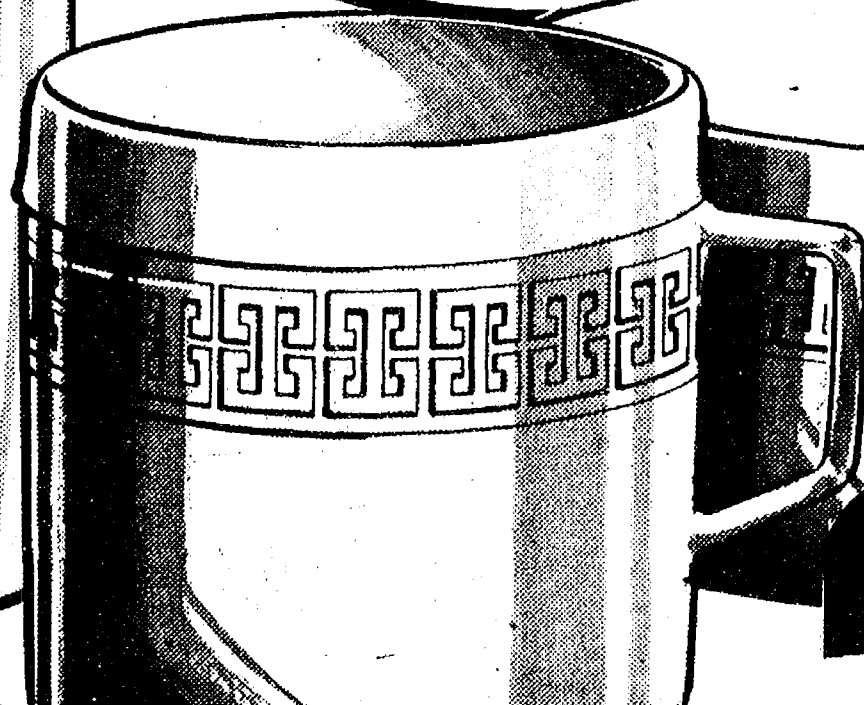
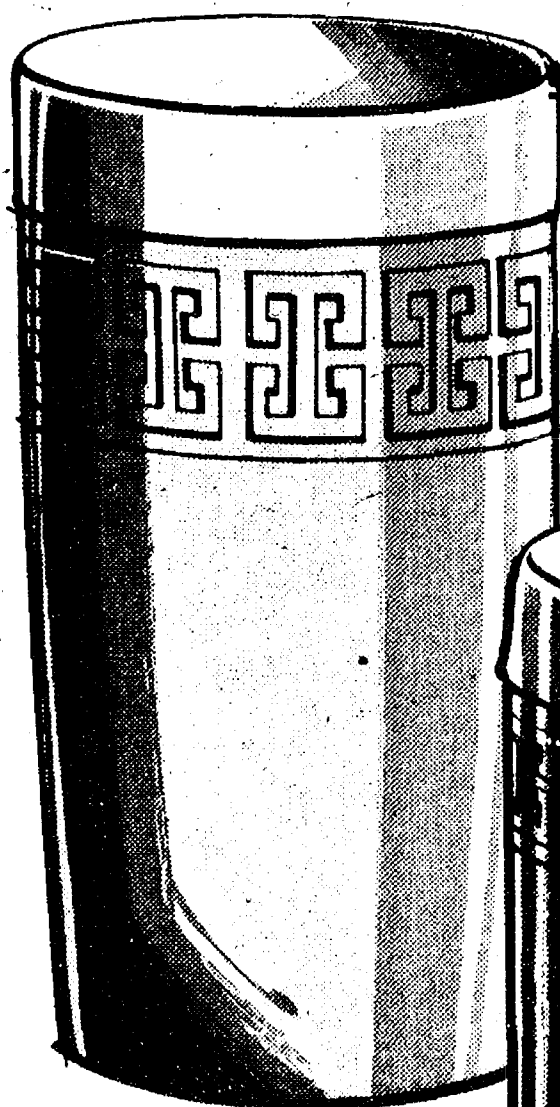


12-oz.
CARTON

47¢

THERM-O-WARE

PERFECT FOR ANY OCCASION ALL YEAR LONG.



THIS WEEK
12-oz. Tumbler

35¢ OR 3 \$1
with every \$3.00 purchase
start your set today!

Keep this handy "Piece-A-Week" Schedule

Week	"Piece-A-Week"	Price with every \$3 purchase
1	9 oz. Cup	35¢ or 3 for \$1
2	12 oz. Tumbler	35¢ or 3 for \$1
3	14 oz. Bowl	35¢ or 3 for \$1

This schedule will be repeated three more times.

COMPLETE YOUR SET!
companion pieces available every week.